

APRIL 10 - APRIL 17, 2026

## SPRING CROP ORGANIC MANGOS



**GOOD NEWS!** Organic Mangos are steady from Mexico and pricing will ease down as the month of April progresses.

Smaller **Organic Ataulfo/Honey Mangos** in 16/18 ct sizing will be promotable for mid-April. Large 12-14 ct sizing is also in good supply.

Overall pricing will drive down as availability drives up for the month of April across all varieties, including "Tommy Atkins" **Organic Round Mangos**. 7-8 ct XL, 10 ct LG, and 12 ct MD **Organic Round Mangos** will have promo opportunities as the month progresses.



### OG BERRIES

**GOOD NEWS!** Organic Strawberries remain promotable from California and Baja with light Central Mexico production continuing. Quality has been excellent, and supplies remain plentiful.

**Organic Blackberries** remain steady from Mexico. Pricing and supply remain steady, and quality has been nice.

**Organic Raspberries** will remain steady. Quality has been excellent with no expected supply issues from Baja/California.

**ALERT!** Organic Blueberries continue to be very tight. Pricing continues to remain strong from Peru and California as both regions have very limited supply. Quality has been excellent. Improvement will come in May.

Driscoll's **Organic Sweetest Batch Blueberries** will be in and out of stock during mid-April. Snag them when you can for outstanding flavor!



### OG BROCCOLI & CAULIFLOWER

**GOOD NEWS!** Organic Broccoli remains in a flush with solid quality and good availability continuing to support promotional movement.

**Organic Sweet Baby Broccoli** continues to be steady overall. Pricing is beginning to firm up following a small window flush at the start of the Salinas harvest.

**Organic Cauliflower** has made a turnaround. After the recent industry shortage, supply is improved and pricing has eased. It remains a feast or family commodity, and changes happen quickly.



### OG ONIONS

**COMING SOON!** Organic Vidalia Sweet Onions are coming! Bagged and Jumbo **Organic Vidalia Sweet Onions** from Georgia are expected in stock around April 17.

**ALERT!** Organic White Onions will transition over to new crop Mexican-grown onions in code 41518. This market is getting very tight with limited supplies, which has jumped pricing up significantly.

About two more weeks of Peri & Sons **Organic Red Onions** from Nevada are expected, at which time the transition over to Texas-grown **Organic Red Onions** will occur.



### OG PEAS

**GOOD NEWS!** A taste of spring is here with a variety of **Organic Peas** from Coke Farms in California.

- **Organic Green Snap Peas**
- **Green Snow Peas**
- **Purple Snow Peas**
- **Organic English Peas**
- **Purple Snap Peas**

8/12 oz **Organic Snap Peas** in compostable trays will be in stock 4/15!

Coke Farms **Organic Fava Beans** are coming into season too!



### OG GREENS

**GOOD NEWS!** **Organic Kales, Collard Greens, and Dandelions** are in great supply and quality from Lady Moon Farms in Florida.



### OG GREENHOUSE CUCUMBERS

**Organic Mini and Euro Cucumbers** continue to improve, with more consistent availability beginning to support the category. Supply is not fully abundant, but conditions are trending in the right direction. Pricing remains elevated but has started to ease as production builds.



### OG BRUSSELS SPROUTS

**GOOD NEWS!** **Organic Brussels Sprouts** remain promotable. Mexico continues to provide dependable volume.

Mesh and cello bagged **Organic Brussels Sprouts** are back in regular supply.



### OG HARD SQUASH

**Organic Green Squash (Zucchini)** is in better supply with Lady Moon Farms now shipping their late Florida plantings. Quality is excellent!

**NOTE:** **Organic Eggplant** pricing is up slightly, and supply is not super abundant. Quality is variable from Mexico. Some Lady Moon Florida product is expected to come online in mid to late April.



### OG ARTICHOKES

**Organic Artichokes** are in good supply, unlike conventional. Lakeside continues to show good supply, especially on Jumbo 12 ct, and availability remains favorable with a good promotional opportunity at current pricing.



### OG CARROTS

Progress! **Organic Carrots** continue to improve, though pricing is not fully normalized. Cello bag supply is getting better, and allocations have been lifted.

**NOTE:** **Organic Baby Carrots** will remain a challenge and are expected to stay tight through mid to late April. In the meantime, **Organic Petite Carrots** continue to be a more available alternative, as sizing on the **Organic Baby Carrot** variety is not meeting expectations.



### OG ASPARAGUS

**Organic Asparagus** supply is tight over mid-April. The Mexican deal is finishing up and majority of supply will transition into new crop domestic supply, which is ramping up, product of California.

**Organic Purple Asparagus** will be back in stock around 4/16.

**OUTLOOK:** New Jersey **LOCAL Organic Asparagus** will be in season with modest volume by late April.



### OG LETTUCE

For mid-April **Organic Romaine and Romaine Hearts** from Lady Moon Farms remain in abundant supply and continue to be promotable. New Crop Salinas field are contributing added volume as well, helping to keep supply in a strong position. The Lady Moon Florida season is expected to wind down around mid-April, potentially the third week of April 19.



### OG PEPPERS

**ALERT!** Organic Color Bell Peppers have tightened significantly, with Mexican supply now limited across all colors and Israeli product finished for the season. Overall availability remains very constrained, pushing pricing to high levels with expected gaps in supply. Conditions are expected to remain very challenging in mid-April.

**ALERT!** Organic Green Peppers from Mexico are very tight, with few shippers quoting and quality being fair to poor. Some new crop Lady Moon Farms Florida product is expected to start in mid to late April.



### OG APPLES

**NOTE:** Washington Organic Cosmic Crisp Apples remain very tight with rising pricing. Sporadic gaps in supply are expected as growers try to elongate to storage season.

**ALERT!** Washington Organic Honeycrisp Apples are limited with high pricing.



**NOTE:** Organic Green Kiwi supply continues to be tight from Greece and Italy. Pricing is expected to remain higher from now to the end of the season.

Organic Pineapple supplies from Mexico on both 6 ct and 8 ct will be in stock and steady for mid-April. Pricing has seen a small adjustment upward.

Organic Pomegranate Arils will remain steady for mid-April. Import Organic Pomegranate Arils are limited this season from Peru, and pricing is higher than the domestic season. These aril cups will be the "I Love Pomegranates" label.



### OG AVOCADOS

**GOOD NEWS!** Organic Hass Avocado from late season Mexico crop are steady for mid-April.

32 ct Jumbo has been added to our growing offerings of Organic Hass Avocados, as well as some new bagged options!

Fair Trade Organic Avocados from Calavo will also be available for the month of April to take the place of Equal Exchange now that they're done for the Mexico season.



### OG CITRUS

**GOOD NEWS!** Organic Mandarin supply is good. Promote with confidence for the remainder of April. Once we get into May, quality will turn and supply will lighten up drastically.

**NOTE:** Blood Oranges and Cara Cara Oranges are finishing up for many California shippers.

Organic Navel Oranges remain in good supply to last through April.



### OG BEANS

**ALERT!** Organic Green Beans are tight with limited supplies from both Mexico and Florida. Pricing is high. Expect supply gaps.

**NOTE:** Organic French Beans (10/1 lb) remain under heavy pressure. Guatemala is still recovering from prior cold weather damage, with some fields down by half and others seeing losses closer to 75 percent.



### OG TOMATOES

Organic Snacking Tomatoes are improving, though availability remains somewhat limited.

Lady Moon Farms has begun harvesting again at their Florida operation, starting with Organic Grape and Medley Tomatoes, with Cherry Tomato production expected to follow as the month progresses. Volumes will be limited to start but will build across all varieties, with excellent quality expected.

**NOTE:** Organic Beefsteak and Cluster Tomatoes continue to see limited availability, though product remains accessible with above average quality. Pricing continues to run elevated as availability remains constrained. With some improvement possible toward the latter part of the month.

availability starting late April with Cal-O.

**NOTE:** Organic Delicata Squash will see a two to three week supply gap as we transition growing regions in Mexico.

New crop Argentina Organic Anjou Pears are expected to arrive before the end of the first week of April. Domestic fruit is expected to end before the end of the month.

New crop Organic Rhubarb is coming into season and will be in stock 4/15.

### OTHER STORIES

**NOTE:** Import Organic Red and Green Grapes at high pricing from imports still remain until supplies finish mid-April.

**OUTLOOK:** Organic Corn from California is slated to begin in late April. Cal-O will begin packing 48 ct Bi-Color Organic Corn bulk crates, with 12/4 tray packs being available in May after. Florida bulk and tray pack will be available towards the end of April as well.

**OUTLOOK:** Organic Seedless Watermelon bins have begun to pop up in Mexico with general



**Pasa** SUSTAINABLE AGRICULTURE

# DONATING TO PASA DURING EARTH WEEK 2026

To celebrate Earth Day and highlight an ongoing commitment to sustainability, Four Seasons Produce will again be donating a portion of profits from sales during Earth Week 2026 (Sunday 4/19 through Saturday 4/25) to Pasa Sustainable Agriculture.

**PARTICIPATING WITH US SO FAR:**



## IDEAS FOR PARTICIPATION:

### RETAILERS:

- Donation amount per case of Organics purchased from FSP during Earth Week (\$.25, \$.50, \$1 etc)
- Round up at the register for Pasa at your store during Earth Week or on Earth Day
- Lump sum donation amount for Pasa (portion of proceeds from sales during Earth Week)
- Or, buy lots of Organics from FSP during Earth Week.

### GROWER/SHIPPER/PRODUCER:

- Donation amount per case of your brand/product sold by FSP during Earth Week (\$.25, \$.50, \$1 etc)
- Lump sum donation amount for Pasa (portion of proceeds from sales during Earth Week)

## WHAT IS PASA?

Pasa Sustainable Agriculture is a PA-based nonprofit that advances sustainable farms and equitable food systems through farmer-driven education, research, and community throughout the Mid-Atlantic and Northeast. Learn more about Pasa at [pasafarming.org](http://pasafarming.org).



## WANT TO BE INVOLVED?

Contact your Four Seasons sales rep or buyer.  
Or speak with Eric Klein from Pasa.  
(814.349.9856 Ext. 772 | [eric@pasafarming.org](mailto:eric@pasafarming.org))

# CONVENTIONAL MARKET NEWS

APRIL 10 - APRIL 17, 2026

## VIDALIA SEASON BEGINS



Spring is here and **Vidalia Sweet Onions** are coming soon!

**GOOD NEWS!** **Vidalia Sweet Onions** will get started in mid April from Georgia! Bulk Jumbo **Vidalia Sweet Onions** in code 4105 will be in stock Thursday 4/16, with the 16/3 lb bagged Vidalias arriving on the following day for 4/17 delivery.

“**Vidalia Onion**” display boxes are available in code 230952 that customers and merchandisers can use to help build displays.

**Vidalia Sweet Onions** signal “spring” and “grilling season” to many East Coast shoppers. Themed display builds and promotions are encouraged. Pricing will be promotable to start and May the best time of the year for ads and large sets. Stay tuned for details on a May **Vidalia Sweet Onion** Promotion and Contest for Four Seasons retailer customers!



### CV TOMATOES

**NOTE:** **Beefsteak** and **Cluster Tomatoes** remain limited overall from Canada, however strong quality and steady availability continue. **Cluster Tomato** cost and availability have shown slight signs of improvement, while **Beefsteak Tomato** conditions remain challenging with cost increases following the Easter holiday. Conditions are expected to gradually improve through April.

**NOTE:** **Snacking Tomatoes** remain limited with early signs of improvement beginning to show. Despite category improvements, **Grape Tomatoes** continue to experience pressure with high pricing. Improved conditions are expected to build through the month, however broader tomato supply constraints may limit how quickly conditions recover.

**ALERT!** **Roma** and **Round Tomatoes** remain very limited, with supply continuing to fall short across both Mexico and Florida, keeping pricing under pressure. Pricing has pushed to very high levels, while quality has been average at best across available product. April is expected to be difficult, with little to no improvement in availability or cost.



### CV STONE FRUIT

A surprise arrival of beautiful Chilean **Peaches** came in - one of the last arrivals of the import season.

Chilean **Red** and **Black Plum** pricing is on the way up as the import season starts tightening on the back end of the season.

#### OUTLOOK:

The first California new crop **Cherries** should arrive in house the last week of April, barring any weather events. An early and good crop is expected.

California **Apricots** should arrive the first week or two of May, along with maybe some **White** and **Yellow Peaches**.

The first South Carolina **Peach** may also arrive in early May.

California **Plums** expected to arrive until about the first week of June.



### CV BERRIES

**GOOD NEWS!** **Raspberries** remain steady from Mexico with very little change to supplies and pricing. Quality has been excellent.

**Strawberries** prices have come off the floor as all volume now moves to California. Both Oxnard and Salinas regions continue to produce steady supplies. Quality is expected to improve after March's heat-damaged fruit, however there are light rains happening which could affect supply and quality in late April.

**Blackberries** remain steady from Mexico. New crops are expected to start over the next few weeks. Quality has been nice with steady supply and pricing.

**NOTE:** **Blueberries** are expected to remain short as Mexico gaps in harvests. The Southeast deal will begin lightly through mid-April with very limited volume starting. High prices are expected to continue with limited supplies through mid-April.

**OUTLOOK:** **Blueberries** will then be promotable in May with Georgia and California in season.



### CV ASPARAGUS

**LOCAL** Delaware **Asparagus** is starting in a light way, with New Jersey to follow mid month. Once **LOCAL** supply opens, the transition away from 11 lb packs and into more 28 lb sizing will follow by late April.

**NOTE:** Nationwide **Asparagus** remains limited in early April. Excess heat in Mexico has slowed growth and further pressured production. While some supply is being maintained through a mix of labels, overall availability is on the lighter side for now.



### CV SQUASH

**GOOD NEWS!** Green and Yellow Squash from Florida are coming on strong with promotable pricing and overall good quality. This is a great in store special item for the start of grilling season!



### CV BRUSSELS SPROUTS

**GOOD NEWS!** Brussels Sprouts remain in a strong domestic flush. Availability is good, quality is consistent, and pricing continues to present a favorable deal opportunity. Pricing will begin to firm up over mid-April.



### CV PEARS & APPLES

**GOOD NEWS!** A great selection of Pears are available including **Anjou**, **Asian Hosui**, Import Pears and USA storage crop **Bartlett** and **Bosc**, **Comice**, **Forelle**, and **Red Anjou Pears**.

**NEW!** New crop import **Forelle Pears** arrived and they are beautiful with their red blush. Grab some of these even if it's only for a color break in your Pear set.

Premium Washington **Opal Apples** with large size in a 27 lb euro box with promotional pricing are available. Snag some before they disappear.

**NOTE:** Eastern and Canadian **Honeycrisp** and **McIntosh Apple** pricing continues to climb as the end of the season is in sight. Eastern supply is expected to finish completely in May.



### CV MANDARINS

**GOOD NEWS!** Strong supplies on "Murcotts" and "Tango" Mandarins from California continue. Promote **Halo Mandarins** into May. Quality has been outstanding with late season varieties.

Import **Mandarins** are easing down in price with the better quality coming from Morocco over Peru.



### CV GREENHOUSE CUCUMBERS

**GOOD NEWS!** Mini Seedless 12/6 ct and 12 ct cello **Euro Cucumbers** continue to see great availability, with strong quality supporting favorable conditions across the category.

Pricing has also moved into a favorable range, creating strong promotional opportunities. Overall conditions remain favorable and are expected to continue.



### CV GREEN BEANS

**Green Beans** are increasing in availability and decreasing in price from Florida. Quality has been good.

New crop fields are finally starting and bulk **Green Beans** from Florida are easing down from the high prices of March.



### CV WATERMELONS

New crop **Seedless Watermelons** from Florida are here! Recent arrivals have shown great appearance and Brix (Sugars) scoring 10-11%. Pricing is starting to drop as early Florida product arrives in bins and cartons.

**Mini Seedless Watermelons** are steady as Guatemala is back with supplies after a rough transition. With the colder start to the Florida season, domestic minis are also available, scoring a 9-10% Brix.



### CV LETTUCE

**Leaf Lettuce** remains steady overall. West Coast production continues to open, and overall availability is gradually improving. **Romaine** and **Romaine Hearts** are in a promotable position, with harvest yields improving and supply becoming more stable as additional regions continue to contribute.

**OUTLOOK:** New Jersey availability will begin the third week of April on **LOCAL Red, Green, and Romaine Lettuce**.



### CV MANGOS

**GOOD NEWS!** “Haden” and “Tommy Atkins” Round Mangos from Mexico are in good supply from partner Continental Fresh and their Water For All label for mid-April.

Champagne label **Ataulfo Honey Mangos** will be available in a premium size 14 ct and in an 18 ct option for the month of April.



### CV LOCAL VEG

**LOCAL** winter-over plantings and early spring crops of vegetables are coming into season in New Jersey!

**Leeks, Scallions, Bunch Spinach, Cilantro and Parsleys.**



### CV ARTICHOKE

**NOTE:** Artichoke supply remains in a tight transition spot. Coachella has wound down faster than expected while Castroville is still behind schedule, leaving a noticeable gap in production. Tight conditions are expected to persist through mid-April until new crop begins to size up from Salinas and Castroville, CA.



### CV PEPPERS

**Color Bell Peppers** are transitioning fully to Canadian greenhouse production, with new crop bringing strong quality to the market. Remaining Mexican supply is limited and being cleared out, with Canadian product now becoming the primary source across all colors.

**ALERT!** Green Peppers remain expensive with limited supplies and highly variable quality. Florida has not yet gotten into heavy volume. When that occurs, some improvement on market conditions is expected by mid to late April.

**ALERT!** Hot Peppers are very tight with high pricing and the possibility of supply gaps. The current outlook shows the possibility of some relief by late April.

**ALERT!** Sweet Corn is in very short supply at extreme prices. Most growers are calling May 1st as the day volume and FOBs should be back to normal on **Bi-Color Corn**. Pricing should start to trickle down through mid-April.

**GOOD NEWS!** Hass Avocados from Mexico continue to be in good supply and are promotable. Bagged and Jumbo-sized fruit will also be in good supply.

**ALERT!** Pineapple supplies continue to be tight



### CV CAULIFLOWER & BROCCOLI

**GOOD NEWS!** Cauliflower remains in a much better spot. Supply is steady, pricing has eased, and promotable conditions are in place. Premium 12 ct is readily available, and **Color Cauliflower** remains available as well, including **Purple, Orange, and Green**.

**NOTE:** Broccoli pricing has turned higher. Fuel costs, along with heat- and rain-related production challenges out West, are driving pricing up. Quality from Mexico has also been gradually declining, with more crossing-related quality concerns showing up. Availability should remain sufficient to cover average demand, but costs are rising rapidly.

Promotional activity should be avoided until later in April, when Georgia should be in harvest on new crop **Broccoli Crowns** and **Bunches**.



### CV KIWI

**COMING SOON!** Four Seasons is excited to kick off the Zespri **Kiwi** season from New Zealand for the end of April with a new and exciting variety! The **Ruby Red Kiwi** has been in development for over ten years and is finally ready to be sold in the United States. **Ruby Red Kiwi** pack size options will be in clamshells in an 8/1 lb and 8/2 lb option for a limited season from late April to May.

**SunGold** and **Green Kiwi** from New Zealand will fully get started in May.

**NOTE:** Kiwi from Italy and Greece have been tight on the East Coast. Pricing is expected to stay higher for the remainder of the season.

### OTHER STORIES

even with Easter in the rear view mirror. Pricing is expected to stay higher for mid-April.

**Grapes** continue to upward trend on all colors and sizes for the remainder of the Chilean deal. Early crop Mexican fruit is being harvested currently and will continue to gain supply as April closes, with volume coming on the first week of May.

**Celery** and **Celery Hearts** continue to improve. Quality is showing much less concern upon arrivals, costs are easing towards promotable, and

overall availability is heading into a flush as new growing regions come online ahead of plan.

**Rhubarb** is season and will be stocked starting 4/15.

**NOTE:** Baby Carrots will remain a challenge and are expected to stay tight through mid to late April.



# SUGARBEE/ROCKIT DISPLAY CONTEST WINNERS

## GRAND PRIZE:

**LARGE STORE**

**SMALL STORE**



**GREENSTAR FOOD COOP**  
Ithaca, NY

**SOULBERRY NATURAL MARKET**  
New Hope, PA

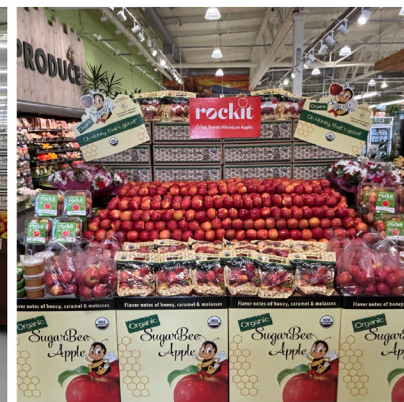
## LARGEST DISPLAY:

**FIRST PLACE**

**SECOND PLACE**

**THIRD PLACE**

**FOURTH PLACE**



**COMMON MARKET 7TH STREET**  
Frederick, MD

**HEALTHY LIVING MARKET**  
Burlington, VT

**DUTCH-WAY FARM MARKET**  
Gap, PA

**KIMBERTON WHOLE FOODS**  
Wyomissing, PA



PHONE: 1.800.422.8384

| [www.fsproduce.com](http://www.fsproduce.com)





# SUGARBEE/ROCKIT DISPLAY CONTEST WINNERS

## MOST CREATIVE DISPLAY:

### FIRST PLACE

### SECOND PLACE

### THIRD PLACE

### FOURTH PLACE



**HEALTHY LIVING MARKET**  
Saratoga Springs, NY

**BISHOP'S SUPERMARKET**  
Whitehouse Station, NJ

**G&E HOCKER'S SUPERMARKET**  
Bethany Beach, DE

**KENNIE'S MARKET**  
Littlestown, PA

## BEST SMALL STORE DISPLAY:

### FIRST PLACE

### SECOND PLACE

### THIRD PLACE

### FOURTH PLACE



**GREEN'S NATURAL FOODS**  
Shrewsbury, NJ

**KIMBERTON WHOLE FOODS**  
Phoenixville, PA

**KIMBERTON WHOLE FOODS**  
Douglasville, PA

**WEAVERS WAY CO-OP**  
Ambler, PA



PHONE: 1.800.422.8384

| [www.fsproduce.com](http://www.fsproduce.com)





New line of **Salad Kits**  
 Made with **ZERO** seed oil dressing and  
 crunchy inclusions



**Italian**

Romaine, Green & Red Cabbage, Kale, Carrots, Green Onion, **Cheese and Garlic Crouton Crumble**, Shaved Parmesan Cheese, Italian Seasoning *with cheesy Italian vinaigrette*



**Aged Parmesan**

Baby Greens and Carrots, **Cheese and Garlic Crouton Crumble**, Shaved Parmesan Cheese *with cheese and pepper vinaigrette*



**Tropical Crunch**

Shredded Romaine and Radicchio, **Island-Style Crouton Crumble**, Diced Banana Bits, Diced Almonds *with creamy tropical dressing*

CODE	DESCRIPTION	PK/SZ	UPC
248334	CV Salad Aged Parmesan Kit	6/8.80oz Taylor Farms Zero	0-30223-06369-8
248335	CV Salad Chop Italian	6/11.3oz Taylor Farms Zero	0-30223-06367-4
248336	CV Salad Chop Tropical Crunch	6/10.75oz Taylor Farms Zero	0-30223-06368-1

**NEW - AVAILABLE NOW!**



PHONE: 1.800.422.8384

www.fsproduce.com





## Equal Exchange Packaging Update: April 2026

Starting mid April and extending into the summer months, you will begin to see some different plastic packaging material for Equal Exchange bananas in your store. For a few years now, we have been using this material during the rainy season at origin to combat quality risks. **We hope that the opposite side of this letter can be a resource/reference sheet for the produce team at your store.**

In comparison to the typical bag (called polytube), this bag (called **polypack**, pictured at right) has fewer openings. The lack of openings reduces airflow during ocean transit, which reduces the crown's exposure to outside air. This helps preserve the crown's quality during transit. Please see the chart below for a comparison of the two types of plastic.



Polypack (seasonal)	Polytube (regular use)
Low density plastic	High density plastic
Tied at the top	Open on both ends
4 small perforations on each side	Large perforations throughout plastic
Less airflow	More airflow
Remains greener in bag, turns to yellow quickly after exposure to oxygen	Color begins to show before plastic is pulled back
Rainy season only	Standard for use all other times of the year
Completely transparent	Slightly opaque

## Frequently Asked Questions about POLYPACK (banana plastic):

**How can polypack improve quality? Why aren't you using it year-round?**

Polypack can improve quality during the rainy season because it prevents mold spores from landing on the crown of the banana.

Additionally, in the case of a steamship line delay, polypack preserves fruit better because it holds in moisture and allows less airflow throughout the case, preventing dehydration.

*However, it requires additional work and planning at the ripening stage due to reduced airflow - so its use is employed only when it is most necessary!*

**Will the fruit look or handle differently?**

For fruit to take on color faster, it needs to be exposed to oxygen. Because polypack has fewer openings, the fruit may remain green until the bags are opened. Once the fruit is exposed to oxygen, it should take on color quickly. At right, you can see a picture of fruit in polypack plastic, ripened and ready to ship to stores.



If you are ready to get your fruit to color, open up the top of the bag so that it is exposed to air.

We recommend checking out this video about ***airstacking*** for best practices on handling polypack banana bags:

[https://www.youtube.com/watch?v=a\\_121UqiMTA](https://www.youtube.com/watch?v=a_121UqiMTA)

*Thank you for your attention and for supporting small-scale farmers in Peru and Ecuador.*

*We welcome any feedback about how fruit is looking/handling: [bananas@okeusa.com](mailto:bananas@okeusa.com).*

