

JANUARY 9 - JANUARY 16, 2026

WINTER CROP ORGANIC CAULIFLOWER & BROCCOLI



Organic Cauliflower from California has reasonable pricing with strong counts and solid packs.

Organic Broccoli Crowns are producing very well in California, while the East Coast continues to offer **Organic Broccoli** primarily in bunches. Quality is strong across both regions, with promotable pricing emerging on bunches.

Organic Sweet Baby Broccoli remains in steady supply with excellent quality from West Coast shippers, with promotable pricing expected later this month.

Organic Romanesco remains in steady supply with excellent quality.



OG CITRUS

ALERT! California **Organic Citrus** continues to face significant challenges after nearly three weeks of minimal sunlight, heavy rain, early morning fog, and low temperatures caused stress and shock to groves.

ALERT! An early end to the California season is expected, along with ongoing quality concerns, supply issues, and inconsistencies for the balance of the season. In the near term, pricing is expected to rise as harvest activity increases, groves dry out, and supply works to catch up with demand.

ALERT! **Organic Mandarins** have been impacted the most by California weather challenges, and prices are expected to continue rising until supply rebuilds and new varieties begin in late January.

NOTE: **Organic Navels** have also been impacted by weather, with harvest delays contributing to rising markets as the season progresses.

NOTE: **Organic Limes** continue to see rising costs as production remains limited due to persistent rain. Markets are expected to continue increasing through January and February.

NOTE: **Organic Blood Oranges, Minneolas, and Cara Cara Oranges** have started, though harvest crews are prioritizing higher-volume items to support core programs. Specialty items will be sporadic for January.

OG BERRIES

GOOD NEWS! **Organic Blackberries** remain highly promotable out of Central Mexico on shipper brands, with excellent quality, strong flavor, and aggressive pricing supporting low retails and increased volume.

Organic Blueberries are holding steady as Chilean volume continues to arrive, with additional volume expected to build later this month in preparation for early February promotions. Quality has been excellent across arrivals.

Organic Raspberries are steady from Central Mexico, offering exceptional quality with consistent pricing and volume.

Organic Strawberry pricing is easing as volume gradually increases from Central and Baja, Mexico. Quality from Central Mexico has been strong, while Baja **Organic Strawberries** have shown some minor quality issues that are expected to improve mid to late January with better weather and fresh arrivals. Pricing is easing on shipper brands, while Driscoll's is commanding a premium.

OG APPLES

GOOD NEWS! **Organic Envy Apples** continue to be a standout promotional item for January, offering excellent quality and attractive markets. **NOTE:** Promos have been so good, there may be fill-rate gaps in early January until the supply chain can refill.

Organic Ambrosia Apples are in a brief supply gap, with additional volume expected to arrive late January and move into a steadier supply position thereafter.

Organic Cosmic Crisp Apples remain in firm supply with strong markets.

Organic Evercrisp Apples are expected to finish up for the season by the end of January as remaining supplies wind down.

Washington **Organic Gala Apples** and **Organic Honeycrisp Apples** remain in a demand-exceeds-supply situation, resulting in strong and rising markets along with occasional supply disruptions. This is expected to be a season-long condition. Some opportunities may develop on off-grade and off-size Organic fruit.



OG COLOR BELL PEPPERS

Organic Colored Bell Peppers are currently sourced primarily from Israel, while Mexican production continues to build. Availability is adequate with slightly elevated pricing tied to import costs and overall supply. As February nears, increased Mexican production is expected to create promotional opportunities as pricing improves.



OG GRAPES

Organic Grapes are in steady supply on both **Organic Red Grapes** and **Organic Green Grapes**.

NOTE: **Organic Green Grapes** are expected to tighten toward the end of January as some South African volume was diverted to Europe due to high US tariffs.



OG ARTICHOKEs

Organic Artichokes are back in good supply with clean arrivals. Current inventory is working through 24-counts and transitioning toward preferred 12-count sizing with steady availability.



OG PEARS

GOOD NEWS! **Organic Anjou Pears**, **Bosc Pears**, and **Red Anjou Pears** are in excellent supply with strong quality and promotional opportunities available. Large displays are encouraged during this period to maximize **Pear** movement.



OG CELERY

ALERT! **Organic Celery** and **Organic Celery Hearts** pricing is higher. Improvements are not expected until February. Shorter turns are recommended.



OG SPECIALTY VEG

Several new and returning California **Organic Vegetable** items are arriving, including **Organic Easter Egg Radish**, **Organic Red Spring Grilling Onions**, and **Organic White Spring Grilling Onions**.

Mexico **Organic Anaheim Peppers** and **Organic Poblano Peppers** are also returning to the mix.



OG LETTUCE

GOOD NEWS! **Organic Romaine Hearts** are in flush supply from Lady Moon Farms and West Coast shippers, offering promotable opportunities in late January.

Organic Leaf Lettuces including **Organic Green Leaf**, **Red Leaf**, and **Romaine** remain promotable from Lady Moon Farms in Florida with excellent quality and dependable coverage.

Organic Iceberg Lettuce from California is steady with strong quality.



OG AVOCADOS

Organic Hass Avocados from Mexico have been limited following the Christmas and New Year holidays, as grower harvests slowed during that period and tightened overall availability.

Markets moved up a little as a result, though pricing is expected to ease back into more promotable levels later this month and into early February as supplies improve.

48ct sizing is what is limited to start January, so 40ct and 60ct will be good to push.



OG KIWIFRUIT

Organic SunGold Kiwifruit from Zespri are in season with both clamshell and bulk options offered. Supplies are expected to carry through most of January.

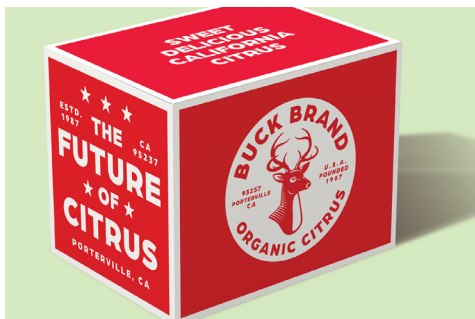
Organic Mammoth Kiwifruit in clamshells from California is available to start the new year, though supplies are limited and may not last through the end of the month.



OG EGGPLANT

Organic Eggplant from Lady Moon Farms in Florida is in decent supply, though a slowdown in production is expected later this month due to a recent cold snap.

Supplies are expected to remain manageable in the short term, with **Organic Eggplant** from Mexico filling in as Florida production recovers.



OG SPECIALTY CITRUS

ALERT! Buck Brand Organic Specialty Citrus has seen many of their peak season items end early, have issues, or delayed starts to their next ones - all due to weeks of heavy rains, fog, and cold weather impacting orchards.

NOTE: Done for the season as of mid-January from Buck Brand: **OG Makrut Limes**, **OG Key Limes**, **OG Calamondin**, **OG Chandler**, **OG Lee/Nova/Novalee**, **OG Satsuma** & **Algerian** & **Fairchild Mandarins**, **OG Buddha Hands**, **OG Limequat**, **OG Finger Limes**, **OG Daisy**, **OG Red Globe** & **Thai Sweet** & **African Shaddock** Pummelo, **OG Pink Variegated** & **Meyer** & **Lemonade Lemons**, **OG T'Orange**, **OG Sweet Lime**, **OG Oro Blanco** & **Melo Gold**.

UPDATED ETAs from Buck Brand: Late January start for **OG Moro Blood**, **OG Centennial Kumquat**, **OG Gold Nugget**, **OG Lavender Gem**, **OG Pixie**. February for **OG Marmalade** and **OG TDE Triple Cross Mandarins**. March for **OG Sanguinelli** and **OG Late Navel**. April for **OG Midnight Valencias** and **OG Valencia**.

ALERT! **Organic Dill** remains tight with prorates in effect from multiple growers.

NEW: **Bunched Organic Mint** is returning from Florida with improving availability.

Organic Mini Seedless Watermelons from Mexico are sizing smaller, primarily 8-count and 9-count fruit, with limited availability on 6-counts. Pricing is expected to remain steady later this month.



OG CUCUMBERS

Organic Mini Cucumbers and **Organic Euro Cucumbers** from Canada remain consistent with dependable quality and good availability at average pricing.

GOOD NEWS! Promotional opportunities on **Organic Euro Cucumbers** from Mexico are expected to develop in mid-January.

Organic Cucumbers from Mexico are seeing slight price increases, though supplies remain good and overall markets are still reasonable. Demands strong.



OG TOMATOES

Canadian greenhouse production continues to provide reliable **Organic Beefsteak Tomatoes** and **Organic Cluster Tomatoes**. Availability is steady with average pricing, and additional **Organic Tomato** volume from Mexico is becoming more available in mid-January.

Organic Roma Tomato programs are stabilizing following recent tightness, with improving volume and strengthening availability. Pricing is becoming more favorable as mid-January approaches.

Organic Snacking Tomato demand remains strong, while supply from Lady Moon Farms in Florida is running below average. As volume improves, supplemental **Organic Snacking Tomato** production from Florida and Mexico will help maintain availability. Pricing remains average with consistent quality.

OTHER STORIES

Organic Asparagus demand has softened following the holiday period, with clean fields and steady supply supporting reliable coverage and quality.

GOOD NEWS! **Organic Fennel** from Lady Moon Farms in Florida is flush with clean bulbs and reliable sizing.

Organic Pomegranates from California have completed their season, though **Organic Pomegranate Arils** remain in steady supply in 4-ounce containers.



OG BEANS

NOTE: **Organic Green Beans** from Mexico are fairly tight. Pricing remains reasonable, but supplies are not currently promotable. Some **Organic Green Bean** volume from Florida may become available later this month.

ALERT! **Organic French Beans** from Guatemala remain limited due to excessive rain and container delays. Orders should remain conservative, with intermittent shortages expected.



OG TROPICALS

Organic Pineapples from Mexico are in steady supply through mid-January, while **Organic Pineapples** from Costa Rica remain limited. **NOTE:** Pricing continues to run high across all origins.

Organic Mangoes from Peru are favoring heavier, larger sizing to start the year. Very little 12ct **Organic Mango fruit** is available and is commanding a premium, while the best value opportunities are expected in 7ct and 8ct sizing through mid-January.

Organic Feijoa have finished for the season, and **Organic Passion Fruit** from California is nearing the end of its run. Volumes of **Organic Passion Fruit** are extremely limited as the season winds down.

NEW: **Premium Organic Red Turmeric** from Florida is now available in very limited quantities. This specialty **Organic Red Turmeric** is high quality and sourced from a small northern Florida farm, with availability expected to remain tight.

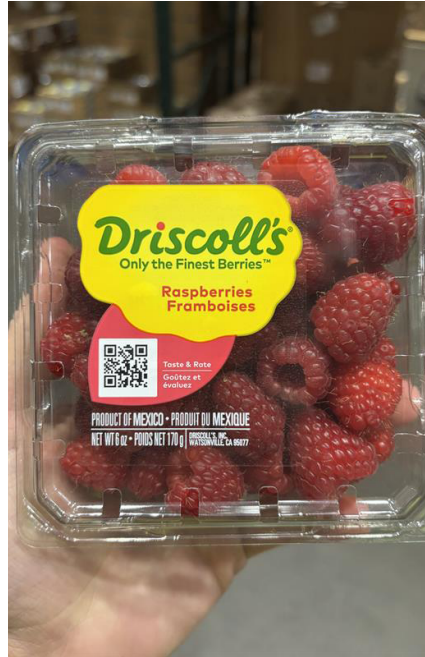
ALERT! Supply and quality issues are lingering for **Organic Baby Arugula** due to the impacts from wet, rainy weather in the Southwest salad growing regions. Low yields from mildew, yellowing, and post-harvest decay are present. All major organic salad brands are struggling to refill the supply chain during January on **Organic Baby Arugula**.

NOTE: **Organic Carrots**, including bags and value-added items, remain limited due to ongoing weather challenges in California and Georgia. Allocations continue, so Bolthouse product supplement Grimmway/Cal-O until the California desert opens in February and Georgia conditions improve later this month.

CONVENTIONAL MARKET NEWS

JANUARY 9 - JANUARY 16, 2026

ABUNDANT BLACKBERRIES & RASPBERRIES



GOOD NEWS! Blackberries and Raspberries are highly promotable out of Central Mexico, offering excellent quality, strong flavor, and sharp pricing that supports aggressive retail opportunities for mid-January!

GOOD NEWS! Strawberries remain readily available from Florida and Mexico. Florida Strawberry volume has recovered following a recent cold snap, while Mexico continues to supply strong volume with promotable markets.

Florida Strawberries continue to deliver excellent quality and flavor, with pricing expected to remain steady mid to late January.

NOTE: Blueberry supplies are expected to tighten as Peru arrivals taper off, with lighter Chilean acreage resulting from replanting to newer varieties and limited volume coming out of Mexico. Quality remains strong across all growing regions.

Driscoll's Sweetest Batch Blueberries continue in peak season from Peru and Mexico with outstanding flavor and bigger sizing. Sweetest Batch Strawberries from Florida and Sweetest Batch Blackberries from Mexico are also available for January.



CV APPLES

NEW: Washington **Aura Apples**, first of the season, are expected to arrive later this month. This unique yellow Apple, bred from Honeycrisp and Aurora parents, offers a distinctive burst of honey and melon flavor.

GOOD NEWS! Envy Apples continue to stand out as a strong promotional opportunity in January, featuring excellent quality and favorable markets. Displays are encouraged to maximize movement during this period.

Cosmic Crisp Apple markets remain firm, supported by strong export demand and increased domestic movement. As a result, availability is tighter than anticipated.

Washington and Eastern **Gala** and **Honeycrisp Apples** remain in a demand-exceeds-supply situation, driving strong and rising markets along with occasional supply disruptions. This is expected to be a season-long condition.

Washington **LucyRose Apples** are expected to finish up for the season in late January as remaining supplies wind down.



CV TOMATOES

GOOD NEWS! East Coast domestic **Roma Tomatoes** and **Round/Vine Ripe Tomatoes** are improving alongside consistent Mexican crossings. Availability is regular, with pricing at average levels and improving into mid-January.

Canadian greenhouse **Beefsteak Tomatoes** and **Cluster Tomatoes** remain steady with strong quality. Pricing continues to run elevated due to lower yields and strong demand, with current conditions expected to persist into late January.

Snacking Tomato supplies remain consistent with both field-grown and hothouse production available. While availability is steady, limited production could create intermittent shortages as the month progresses, potentially impacting pricing.



CV CITRUS

ALERT! California **Citrus** has been heavily impacted by minimal sunlight, persistent rain, early morning fog, and low temperatures, placing significant stress on citrus trees and sending groves into shock.

ALERT! An early end to the California season is expected, along with ongoing quality challenges, supply issues, and inconsistencies for the balance of the season. In the short term, prices are expected to rise as harvest activity ramps back up, groves dry out, and supply works to catch up with demand. Most fruit will be culled or has dropped from trees.

ALERT! Mandarins have been the most affected by California's weather challenges, and markets are expected to continue rising until supplies improve and new varieties come online in late January. **ALERT!** Halos supplies will gap during mid January, so filling in with other brands will be needed.

NOTE: Navels have also been impacted by weather, with small fruit remaining very limited for the remainder of the season.

NOTE: Lime costs continue to rise as production remains limited due to persistent rain. Markets are expected to continue increasing through January and February.



CV ASPARAGUS

Asparagus from Mexico and Peru continues to show solid supply, though crossings are presenting some quality concerns. Standard sizing remains steady, while Jumbo remains limited, with markets expected to climb into February.

OUTLOOK: Looking ahead, February through April remains the prime promotional window for **Asparagus** with new crop Caborca, Mexico volume and quality in peak season, making it an ideal time to begin planning features.



CV STONE FRUIT

Chilean import **Apricots, Cherries, Nectarines,** and **Peaches** are currently available with very nice quality and fair, steady markets.

New **Black Plums** are expected to arrive later this month, and offering a full selection of **Stone Fruit** is encouraged to drive stronger overall sales.



CV BRUSSELS SPROUTS

ALERT! **Brussels Sprouts** remain very limited on the West Coast, with discoloration and occasional early decay. Broad relief is not expected until early February.

Belgium iceless **Brussels Sprouts** remain a viable alternative, though port delays can impact timing.

ALERT! Mesh, value added, and microwave packs are even tighter due to added handling and cold chain sensitivity reducing shelf life.



CV CELERY

ALERT! **Celery** and **Celery Hearts** markets are trending higher and are expected to peak before easing closer to February. Quick inventory turns are recommended.

ALERT! Dole sleeved **Celery** and Dole **Hearts** remain limited and command an even higher premium, with non-Dole labels supplementing availability.



CV SCALLIONS

ALERT! **Scallions** continue to experience tight supplies, resulting in expensive pricing. Supply gaps and higher markets are expected to persist, until late January.



CV AVOCADOS

GOOD NEWS! **Avocados** remain promotable through the holiday season and into the new year, with strong momentum expected to carry through the Super Bowl period.



CV MELONS

Melon supplies are improving, with better availability expected going forward on both **Cantaloupes** and **Honeydew**.

Seedless Watermelons from Florida have finished for the season. South-central Mexico continues to supply the market, though production is past peak, resulting in rising markets.

Mini Seedless Watermelons from Guatemala and Honduras are in steady supply with favorable weather across multiple regions. Markets are expected to strengthen as volumes come off peak supply, with Mexico remaining available as a secondary option.



CV GRAPES

OUTLOOK: Import **Grapes** are shaping up for promotion toward late January and into early February, with Chilean fruit arriving in strong waves alongside a steady flow of Peruvian volume.

Large sizing will show the best price point, while Jumbos will be the top shelf variety trading at a premium.



CV KIWIFRUIT

Green Kiwifruit volumes from Italy and Greece increase by mid-January, allowing markets to soften slightly as additional supply enters the pipeline.

Red Kiwifruit in a clamshell 16-count, 1-pound pack from California is also available with limited but steady volume.

SunGold Kiwifruit from Zespri is in good supply despite strong demand, with availability in both 8-count, 1-pound **SunGold** clamshells and volume-filled options through January.



CV WARM VEG

A recent cold snap in southern growing regions has slowed production on several items, including **Green Squash**, **Eggplant**, and **Cucumbers**. As a result, slight price increases are being seen, though overall supplies remain adequate.

Green Bell Peppers appear to be less impacted by these conditions.



CV LETTUCE

Romaine Hearts are showing improved trims, more consistent weights, and easing costs as acreage scales. Promotable pricing is expected later this month.

Iceberg Lettuce supplies are steady with desert fields open, and markets are easing as availability stabilizes.

Leaf Lettuce varieties, including **Green Leaf**, **Red Leaf**, and **Romaine**, are plentiful as desert production ramps up. Fills are clean, availability is strong, and pricing is soft enough to support light to moderate promotions.

New bag 16/3lb **White Onions** (code 4586), and 16/3lb **Red Onions** (code 247399) are available.

Pineapple volumes remain steady, though markets are expected to firm slightly by mid-January. All sizes are anticipated to remain available during this period.

Most of the industry **Mango** supply has transitioned to Peru, with the Kent variety offering excellent eating quality. Supply conditions through mid-January are expected to remain steady, with pricing easing from earlier levels.



CV CUCUMBERS

Canadian hothouse programs continue to provide stable **Mini Cucumber** and **Euro Cucumber** volumes with good quality.

GOOD NEWS! Availability remains consistent with average pricing, while increased **Euro Cucumber** production from Mexico is expected to create promotional opportunities in mid-January.



CV BROCCOLI & CAULIFLOWER

Broccoli Crowns and **Bunched Broccoli** supplies remain steady on the East Coast out of Georgia, while desert volume from California is clean and competitive. With Mexico contributing, the overall market remains steady as eastern production transitions toward Florida.

Broccoli Rabe supplies are steady, though costs increased due to rain and earlier short supplies. Fields are improving, but pricing has been slow to return to historical averages.

Sweet Baby Broccoli remains generally steady, though shipper positions vary widely, creating uneven offers from period to period.

GOOD NEWS! **Cauliflower** continues to offer steady quality and supply from California, with promotable pricing holding firm.

OTHER STORIES

NOTE: **Bicolor Corn** from Florida remains available, though markets are tightening and pricing is expected to rise as supplies draw down.

GOOD NEWS! **Jumbo Artichokes** continue to offer promotable quality and good availability, with pricing expected to remain firm and workable through the balance of the month.

NOTE: **Carrot** supplies, including bags and value-added items, remain tight as rain in Bakersfield and cold, wet conditions in Georgia limit availability. Bothhouse will remain a key supplier until the California desert opens in February and Georgia conditions improve later this month for Grimmway.



CV HARD SQUASH

NOTE: **Acorn Squash** supplies are tightening, requiring some flexibility on sizing to keep product moving. Pricing is expected to remain steady.

Conventional **Kabocha** and **Delicata** season have concluded, and offerings will now be **Acorn**, **Butternut**, and **Spaghetti Squash**.

Wintercrop specialty hard squashes will be stocked in in our Organic assortment: **OG Delicata**, **OG Kabocha**, and **OG Koginut**.



CV PEPPERS

GOOD NEWS! 15lb **Elongated Sweet Peppers** are coming into peak season from Mexico at value pricing.

GOOD NEWS! **Colored Bell Pepper** production from Mexico is increasing, creating favorable market conditions as January continues. Pricing is improving quickly, and promotions are recommended for mid to late January.

NOTE: **Orange Habanero Chili Peppers** remain in tight supply as Florida crops continue to struggle. Some relief is anticipated late January as Mexico begins production.

POM POM **Pomegranate Arils** are expected to remain steady to start the new year across all sizes, including the new 2-pack 8-ounce twin pack option.

Pomegranates from Israel have begun arriving on the East Coast, allowing for a smooth transition from the final California POM Wonderful volume into imported fruit.

Black Mission Figs from Mexico are moving into higher volume by mid-January, with pricing becoming more promotable as supplies build.



sumo
CITRUS®



SUMO CITRUS DISPLAY CONTEST

JANUARY 5 - JANUARY 18, 2026

A SUMO-sized fruit calls for a SUMO-sized display contest! Four Seasons Produce brings you big, beautiful SUMO Citrus (Dekopons) that are now promotable and bursting with impressive size and quality. It's time to turn heads with bold displays that celebrate this standout fruit in a big way.

DISPLAY CONTEST CRITERIA:

- Build a SUMO sized display of SUMO Citrus (Dekopons) in your department or store.
- **MUST purchase a total of 12 cases** of SUMO Citrus during the contest period. ALL fruit MUST be purchased from Four Seasons Produce. This can be a combination of bags and bulk fruit. Codes are listed below:
227060 - CV Mandarin SUMO 25CT 18lb
230107 - CV Mandarin SUMO 9/3lb
223648 - SUMO Empty Display Box
223548 - POS Display Bin
- Displays **MUST show the SUMO Citrus branding** through POS signage.
- All displays must remain up for a **minimum of 1 week**.
- Send all contest photos to contests@fsproduce.com by **January 22, 2026**.



DISPLAY CONTEST PRIZES:

GRAND PRIZE: \$750 GIFT CARD

(Display will be judged on creativity use of SUMO POS and overall eye appeal)



LARGEST DISPLAY:

- 1st Place - Laptop
- 2nd Place - YETI Cooler
- 3rd Place - Smart Watch
- 4th Place - Pizza Oven
- 5th Place - Breville Juicer

MOST CREATIVE DISPLAY:

- 1st Place - Laptop
- 2nd Place - YETI Cooler
- 3rd Place - Smart Watch
- 4th Place - Pizza Oven
- 5th Place - Breville Juicer

BEST SMALL STORE: (3 registers or less)

- 1st Place - Laptop
- 2nd Place - YETI Cooler
- 3rd Place - Smart Watch
- 4th Place - Pizza Oven
- 5th Place - Breville Juicer

For more information on SUMO Citrus please visit <https://sumocitrus.com/>

For pricing information or tips on how to build a SUMO size display, please contact your Four Seasons Sales Rep or Merchandiser.



PHONE: 1.800.422.8384

| www.fsproduce.com



NORTHWEST PEAR DISPLAY CONTEST

January 5 - February 1, 2026



Want to hear about a “pear”-fect way to build your pear category sales?

Four Seasons Produce has teamed up with the Northwest Pear Bureau to bring you a display contest sure to have you go for the gold in Pear sales and profits. Pears, both conventional and organic, have shown outstanding quality all season. Now is the perfect time to take advantage of some awesome promotional pricing, show off your pear flair, and have the chance to win some super cool prizes. So, “pear” up with your Four Seasons Sales Rep or Merchandiser and get some great plans in place for pear display builds and promotions in your stores!

CONTEST CRITERIA:

- Build a “PEAR”-fect display of beautiful Pears from the Pacific Northwest. **All fruit MUST be purchased from Four Seasons Produce.**
- **All displays must contain 3 Pear varieties**, either CV or OG (or both). Pear varieties for the duration of this contest will be Anjou, Red Anjou, and Bosc. We will also have Bartletts and Comice while supplies last to help boost the category.
- **Must use Northwest Pear point of sale material** in your displays. Point of sale signs will be provided by your Four Seasons Sales Rep or Merchandiser.
- All displays must remain up for a **minimum of 1 week**.
- Send all display pictures to contests@fsproduce.com by **February 5, 2026**.



CONTEST PRIZES:

GRAND PRIZE:

Grand prize winner will receive a trip to the Pacific Northwest in September 2026 to view Pear Orchards and packing sheds!



BEST SMALL STORE DISPLAY (4 registers or less)

- 1st Place - 55in Flat Screen TV
- 2nd Place - Chromebook
- 3rd Place - JBL Bluetooth Earbuds

BEST LARGE STORE DISPLAY (5 registers or more)

- 1st Place - 55in Flat Screen TV
- 2nd Place - Chromebook
- 3rd Place - JBL Bluetooth Earbuds



PHONE: 1.800.422.8384

www.fsproduce.com





Envy Apple Display Contest

January 5 - February 1, 2026

MAKE YOUR COMPETITION "RED" WITH ENVY...

Four Seasons Produce has teamed up with Envy Apple and The Oppenheimer Group to bring you a display contest sure to make your competition ENVY-ous. Beautiful conventional and organic Envy Apples are ready to promote and make some sweet displays with! High graphic bins and great point of sale materials are available to build some super attractive and creative displays.

DISPLAY CONTEST CRITERIA:

- **ALL fruit MUST be purchased from Four Seasons Produce** in order to qualify. Your display may contain other apples in it to add some color, but will need to be at least **75% Envy Apples**.
- Must purchase a total of **8 cases of apples** during the contest period in order to qualify for entry. This can be a combination of CV or OG fruit, both bulk and pouch bags.
- **Must use Envy Apple display bins/boxes OR Envy POS signage in/on your displays.** Talk with your Four Seasons Sales Rep or Merchandiser for info on how to grab one of these.
- All Envy displays must remain up for a **minimum of 1 week**.
- Send all contest photos to contests@fsproduce.com by **February 5, 2026**.



ENVY APPLE PRODUCT CODES:

- 238137 - CV Envy 12/2lb pouch
- 6076 - CV Envy 45/55ct 27lb Euro
- 238035 - OG Envy 12/2lb pouch
- 42089 - OG Envy 45/55ct 27lb Euro
- 23377 - POS Envy Display Bins
- 229828 - POS OG Envy Display boxes (brown box)



Really sharp Envy Apple tote bags will be available as well. Please ask your Four Seasons Sales Rep or Merchandiser for detail on how to get some.

For additional Envy Apple information, click on the link below:
[The Ultimate Apple Experience | Envy Apple](#)

For more information or display tips and ideas, please talk to your Four Seasons Produce Sales Rep or Merchandiser.



PHONE: 1.800.422.8384

| www.fsproduce.com



JANUARY 9 - JANUARY 16, 2026



Envy Apple Display Contest

January 5 - February 1, 2026

DISPLAY CONTEST PRIZES:

CATEGORIES:

MOST CREATIVE DISPLAY

LARGEST DISPLAY

BEST SMALL STORE DISPLAY
(3 registers or less)

PRIZES:

1ST PLACE: MOUNTAIN BIKE

2ND PLACE: SMART WATCH

3RD PLACE: NESPRESSO

*Pictures shown are
for demonstration only.
Actual prize may vary.



There will be **ONE Honorable Mention** in
each of the 3 categories above receiving
a **Produce Department Pizza Party!**

EVERYONE IS A WINNER:

**Every qualified entry will receive an
Envy Apple/Four Seasons Produce
backpack! Check it out!**



For additional Envy apple information, click on the link below:

[The Ultimate Apple Experience | Envy Apple](#)

For more information or display tips and ideas, please talk to your Four Seasons Produce Sales Rep or Merchandiser.



PHONE: 1.800.422.8384

| www.fsproduce.com



"PAINTING PICTURES" WET RACK DISPLAY CONTEST

JANUARY 12 - APRIL 12, 2026



Calling all Produce Artists!

Time to show the wet rack a little bit love with the Four Seasons Produce Painting Pictures Wet Rack Display Contest! The natural colors and textures that nature provides us with lettuces, leafy greens, roots, and fresh herbs set the stage for creating an awesome customer experience! So, let's dust off those paintbrushes, clean up the canvases, and create some fresh experiences with our "Painting Pictures" Contest.



DISPLAY CONTEST CRITERIA:

- "Paint a picture" in your department by creating an amazing visual with your wet rack.
- Must include **at least 3 NEW items** within the rack that you have never tried before (must include which 3 items are additions in your picture submission).
- Must highlight and **put on ad at least 2 different items** within your rack at least once a month for the length of the contest.
- Submit all pictures to contests@fsproduce.com by **April 16, 2026**.

DISPLAY CONTEST PRIZES: (gift cards)

1ST PLACE - \$200



2ND PLACE - \$150



3RD PLACE - \$100



EACH WINNER WILL RECEIVE A BRAND NEW FOUR SEASONS PRODUCE ENGRAVED PRODUCE KNIFE AND LEATHER SHEATH!

Time to get those creative juices flowing, and create a wet rack that Picasso would be proud of. Remember, like any famous artist's style of painting, your wet rack is an individual expression of fresh. Get creative, and have some fun!

For additional merchandising best practices and wet rack display tips, please contact your Four Seasons Sales Rep or Merchandiser.



PHONE: 1.800.422.8384

| www.fsproduce.com



Earthbound Farm®



Organic Salads

Now Available at Four Seasons

Plant-Based Tray Line

Crafted from recycled plant fibers with a food-grade coating, our eco-friendly tray is designed to protect the freshness of your greens while using 95% less plastic than the standard clamshell package.



CODE	DESCRIPTION	PK/SZ	UPC
246837	OG Salad Beet Greens	6/4 oz Earthbound Clamshell	0-32601-95535-9
246835	OG Salad Big Leaf Spinach	6/8 oz Earthbound Fiber Tray	0-32601-95559-5
246834	OG Salad Chopped Spinach	6/4 oz Earthbound	0-32601-95555-7
246830	OG Salad Spinach-Butter	6/5 oz Earthbound Fiber Tray	0-32601-95515-1
246831	OG Salad Spinach	6/8 oz Earthbound Fiber Tray	0-32601-95352-2
246832	OG Salad Spring Mix	6/8 oz Earthbound Fiber Tray	0-32601-95351-5
246833	OG Salad SUPR GRN Red Arugula	6/5 oz Earthbound Fiber Tray	0-32601-95355-3
245368	CV Salad Baby Green & Red Leaf	8/4 oz Earthbound Greenhouse	0-32601-95463-5

AVAILABLE NOW!



PHONE: 1.800.422.8384

| www.fsproduce.com

