

# ORGANIC MARKET NEWS



JANUARY 16 - JANUARY 23, 2026

## ORGANIC SPECIALTY VEG



There will be some interesting colors and flavors to add vibrancy to your organic wet veg racks and warm veg counters for mid to late January.

**NEW:** Organic Komatsuna is now available. Komatsuna is part of the Bok Choy family and is similar to Tatsoi - ideal for stirfry, saute, salads, and more.

**NEW:** Organic Red Napa Cabbage has stunning color!

Organic Red Carrot and Easter Egg Radish bunches are back in season.

**NEW:** Organic Hot Pepper items have arrived from Del Cabo Jacobs Farm, including Organic Padron Peppers, Organic Cherry Bomb Peppers, Organic Jalapeno Peppers, and Organic Red Fresno Peppers.

Organic Spring Grilling Onions in both White and Red from Coke Farms are now in season.

Organic Romanesco remains in steady supply from Lakeside with excellent overall quality.



### OG TOMATOES

**Organic Beefsteak** and **Cluster Tomatoes** from Canadian greenhouse programs are supplying steady volume with consistent quality. Availability remains reliable and pricing is running average to slightly favorable given conventional costs, with promotional opportunities developing in mid to late January.

**Organic Roma Tomatoes** continue to see increasing production out of Mexico, supporting favorable availability in mid January. As volume builds, pricing has become more aggressive, creating strong promotional opportunities later this month with excellent quality.

**Organic Snacking Tomatoes** continue to see strong demand as supply from Lady Moon Farms improves. Supplemental production from Florida, Canada, and Mexico is supporting stable availability of **Organic Grape** and **Cherry Tomatoes**. Pricing remains steady and quality continues to be strong.



### OG BERRIES

**GOOD NEWS!** Organic Blackberries remain very promotable on shipper brands with exceptional quality, strong harvests, and excellent flavor.

**Organic Blueberries** are steady out of Chile and Peru. Harvests remain consistent and are expected to grow toward the end of January into early February. Quality has been strong and eating quality has been excellent.

**Organic Raspberries** remain steady from Baja and Central Mexico. Favorable weather has supported consistent harvests and very nice quality fruit.

**Organic Strawberries** continue to be available out of Baja and Central Mexico. Favorable weather has supported steady harvests and good quality.



### OG CITRUS

**NOTE:** California Organic Citrus harvest is back in full swing as growers continue to assess damage from prior, rainy weather events. Morning moisture and fog are still limiting early harvest hours, shortening days, though overall supply is catching back up to demand. **ALERT!** Quality challenges are expected to persist despite additional grading efforts.

**ALERT!** Organic Mandarins will see most growers delay transitions into new varieties until the end of January, creating gaps for some shippers. **ALERT!** Organic Halos brand is expected to remain out of stock until early February.

**Organic Navel Oranges** are mirroring the broader market, with large fruit very abundant and offering promotable pricing, while smaller sizes remain extremely limited.

**Organic Specialty Citrus** items including **Organic Blood Oranges**, **Organic Cara Cara Oranges**, and **Organic Minneola Tangelos** are now available.





### OG CUCUMBERS

**Organic Mini and Euro Cucumbers** remain stable with dependable quality from Canada. Availability is consistent and pricing is slightly elevated in mid January. Mexican production is available at lower costs, though quality has been below average.



### OG BEANS

**NOTE:** **Organic Green Beans** remain limited. Some supply is arriving from Mexico and Florida to help cover demand.

**ALERT!** Guatemalan **Organic French Beans** in 10/1lb packs remain limited due to excessive rainfall and ongoing container delays. Intermittent shortages are expected as supply challenges persist through January.



### OG LEEKS

**GOOD NEWS!** California **Organic Leeks** are in excellent supply with favorable pricing and are a strong promotable option for wet rack sets.



### OG PEARS

The USA Pears display contest and promotion continues with excellent quality, strong supply, and favorable markets. Building **Organic Pear** displays now will help maximize profits.



### OG BRUSSELS SPROUTS

**Organic Brussels Sprouts** are coming back into season. To refill the supply chain, a mix of 25lb and 10lb bulk cases will be sourced. Pricing is starting up on the high side, but should improve in February and March.

24/1lb **Organic Mesh Bag Brussels Sprouts** will be in stock starting the week of 1/19.



### OG GRAPES

**Organic Grapes** are shipping with steady supplies of **Organic Red** and **Green Grapes**. Markets are expected to remain consistent, though **Organic Green Grapes** could tighten toward the end of January until new arrivals in early February.



### OG CAULIFLOWER

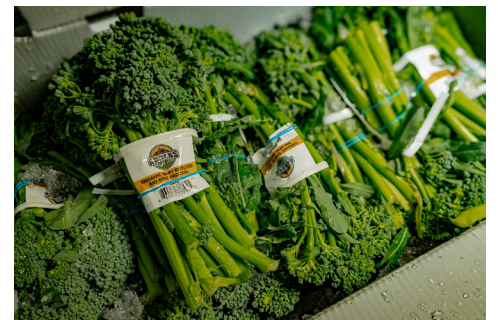
**GOOD NEWS!** **Organic Cauliflower** is very promotable with strong counts and pack outs coming out of California for mid January.



### OG APPLES

**GOOD NEWS!** **Organic Cosmic Crisp, Envy, and Fuji Apples** are offering promotional opportunities on larger size fruit in late January.

The Washington **Organic Envy Apple** display contest is currently underway, with outstanding fruit quality. Large displays and sampling are encouraged to help drive additional sales.



### OG BROCCOLI

**GOOD NEWS!** **Organic Sweet Baby Broccoli** is shipping with steady supplies and outstanding quality from West Coast shippers. Pricing is promotable.

California **Organic Bunched Broccoli** is producing very well. The market is primarily being supplied by West Coast shippers offering excellent quality, and pricing is becoming more promotable as availability opens up.

**Organic Broccoli Crowns** continue to hold a premium due to sizing constraints. Steady availability and strong quality are expected with pricing continuing to trend lower as volume improves in late January.





## OG CELERY

**NOTE:** **Organic Celery** and **Organic Celery Hearts** remain at elevated markets, though pricing is expected to ease late January.

Most shippers have implemented meaningful cost reductions, with markets still being influenced by higher Conventional trends.



## OG ARTICHOKE

**Organic Artichokes** are in good supply from Lakeside with clean arrivals and steady sizing. 12ct Jumbos are readily available and preferred.



## OG ASPARAGUS

**Organic Asparagus** demand has softened following the holiday period, and fields are in clean condition. Supplies are steady with reliable coverage and quality.

There are good opportunities on smaller sized **Organic Asparagus**, which is abundant in the market.



## OG COLOR BELL PEPPERS

**Organic Colored Bell Peppers** are primarily being sourced from Mexico and Israel as Mexican volumes continue to increase. Availability is adequate, and additional production from Mexico is expected to create excess supplies, driving improved costs later in January.



## OG EAST COAST GREENS

**GOOD NEWS!** **Organic Cabbage**, **Organic Kale**, **Organic Collard Greens**, and **Organic Dandelion Greens** remain plentiful with good pricing and outstanding quality from Lady Moon Farms in Florida.

**GOOD NEWS!** **Organic Baby Bok Choy** is in great supply out of California with several shippers active, and Lady Moon Farms in Florida continues to produce as well. Overall this is a very promotable item.

**GOOD NEWS!** **Organic Fennel** is abundant from Lady Moon Farms in Florida, featuring clean bulbs and reliable sizing that supports promotional activity.



## OG LETTUCE

**GOOD NEWS!** **Organic Romaine Hearts** are in good supply from both Lady Moon Farms and West Coast shippers. This item is very promotable now, with some tightening expected late January as supplies begin to balance.

**Organic Green Leaf**, **Red Leaf**, and **Romaine Lettuce** from Lady Moon Farms in Florida remain promotable with excellent quality.

A cold front moving through Florida may impact supply and slow harvest, and coverage plans are in place with West Coast shippers should availability from Lady Moon become a concern in late January.

California **Organic Iceberg Lettuce** is steady with strong quality.

**GOOD NEWS!** **Organic Cilantro** is abundant out of California, with many shippers actively looking to promote.

**NOTE:** **Organic Zucchini** has reduced supply out of Mexico driving increased pricing. Quality has been acceptable, though it is **not** considered highly promotable at this time.

## OTHER STORIES

**ALERT!** **Organic Scallions** remain tight with elevated pricing and continued prorates on orders.

Mexico **Organic Mini Seedless Watermelons** are starting to open up in availability. Pricing is remaining steady.

**ALERT!** **Organic Baby Arugula Salad** continues to see fill-rate issues here in January.

**NOTE:** **Organic Bag Carrots** and **Value Added Organic Carrots** remain limited as weather conditions in California and Georgia continue to restrict supplies, particularly on cello bag packs. Bolthouse will remain part of the supply mix until the California desert season begins in February and Georgia production improves late January for Grimmway/Cal-O.



# CONVENTIONAL MARKET NEWS

JANUARY 16 - JANUARY 23, 2026

## PROMOTABLE SWEET PEPPERS



**GOOD NEWS!** Greenhouse **Colored Bell Pepper** supplies continue to grow as Mexican volumes increase, with **Yellow Peppers** showing slightly better availability than **Red** or **Orange**. Quality is strong and pricing supports promotional opportunities late January.

**GOOD NEWS!** 15lb field-grown elongated **Red La Rouge Peppers** are seeing excellent volumes from Mexico and promotions are encouraged to drive incremental sales for late January.

**GOOD NEWS!** **Mini-Mix Sweet Peppers** 12/1lb are improving in volume which is allowing for lower prices and more promotability. This has become a popular snacking and veg tray item.



### CV APPLES & PEARS

**NEW:** Washington **Aura Apples** have arrived and are a great addition to the apple assortment. This yellow variety is crisp, sweet and great for snacking.

**GOOD NEWS!** The **Envy Apple** display contest and promo is underway, with outstanding fruit quality. Large displays and sampling are encouraged to drive incremental sales.

**GOOD NEWS!** Washington **Fuji Apples** are offering promotional opportunities on larger sizes later this month.

**NOTE:** Eastern **Gala Apples** and **Honeycrisp Apples** continue to firm as supplies tighten.

Eastern **McIntosh Apples** are sizing small, with large premium fruit difficult to secure, resulting in rising markets. Eastern **Rome Apples** have concluded for the season.

The USA Pears display contest and promotions continues, supported by excellent quality, strong supplies, and favorable markets.



### CV TOMATOES

**Roma Tomatoes** and **Round/Vine Ripe Tomatoes** are seeing improved production out of Mexico, supporting steady volumes alongside Florida supplies. Colder temperatures in Florida later this month may impact overall volume. Inventories are well balanced and pricing remains favorable for mid month.

**Snacking Tomatoes** including **Cherry Tomatoes**, **Medley Tomatoes**, and specialty items from Canada are arriving with good quality. Availability remains somewhat limited, though additional field grown production is helping overall volume. Grape Tomato prices are on the rise.

**NOTE:** **Beefsteak** and **Cluster Tomatoes** remain limited as demand continues to outpace production from Canada. Quality is consistent, and availability has held steady despite tight supplies. Market conditions continue to firm as January progresses, driving higher pricing.



### CV BERRIES

**GOOD NEWS!** **Blackberries** remain highly promotable as harvests continue to be strong, delivering excellent quality, flavor, and aggressive pricing.

**GOOD NEWS!** **Raspberries** remain readily available out of Mexico with strong supplies, good quality, and promotable pricing.

**Blueberry** availability continues to tighten. Chilean acreage is down this season, which is expected to result in shortages later in January and into February. Peru supplies are available but remain light as production has passed peak levels. Mexico volumes are also limited.

**Strawberry** supplies tightened rapidly following weather challenges in Florida. Increased demand for Mexico **Strawberries** due to reduced Florida supply has pushed pricing higher.

Florida **Strawberry** quality is expected to range from fair to good with some bruising, while Mexico quality should remain strong overall.





## CV SPECIALTY BERRIES

**GOOD NEWS!** Driscoll's **Sweetest Batch Blueberries** are promotable for mid to late January! Flavor, size, and quality is excellent!

**Sweetest Batch Blackberries** by Driscoll's are also tasting fantastic! Volume is modest.

Driscoll's **Sweetest Batch Strawberries** continue arrive, adding a high-flavor option to you Strawberry sets.

Florida grown "Winter-Frost" **Pineberries**, a white-pink strawberry, are in peak season!



## CV STONE FRUIT

Chilean **Stone Fruit** supplies are strong, with good availability of **Apricots, Cherries, Nectarines, Donut Nectarines, Peaches, and Plums.**

Carrying a full assortment is encouraged to meet customer demand and enhance overall satisfaction. Clamshell packs will be available in addition to loose.



## CV GRAPES

**GOOD NEWS!** **Grapes** are dropping in price as strong arrivals from Chile and Peru continue. This presents an ideal opportunity to promote all colors and sizes through February.



## CV ASPARAGUS

**Asparagus** from Mexico and Peru is showing some smaller sizing on crossings with good overall quality and solid supply. Standard sizing remains steady while Jumbo sizing is limited. Prices are easing ahead of the expected February flush as the Caborca, Mexico season approaches.



## CV CABBAGE

**Green Cabbage** is steady out of the Southeast.

Decent pricing and strong supply are expected on high graphic boxes out of Florida for St. Patrick's Day promotions in March.



## CV SQUASH

**NOTE:** **Green Squash** supplies remain tight overall, with higher pricing out of the Southeast. Pricing is **not** ideal for promotions and overall quality has been fair.



## CV CUCUMBERS

**NOTE:** **Cucumbers** are showing a slight uptick in pricing on "Super Select" grade. Supplies have been lighter out of the Southeast, with some additional product beginning to move out of Mexico. Overall quality has been acceptable.

**Mini Seedless** and **Euro Cucumbers** are shipping with reliable quality from Canadian greenhouses. Availability remains consistent, though market conditions are tightening due to Mexican supply challenges. Slight price increases are expected by mid to late January.



## CV MELONS

**Cantaloupe** and **Honeydew** supplies are increasing with additional vessel arrivals from Central Mexico, and prices are gradually easing as demand softens.

**Mini Seedless Watermelons** remain steady out of Guatemala with excellent quality and promotable pricing.

**NOTE:** Mexico **Seedless Watermelons** are in tight supply due to a significant transition between fields. Pricing is rising as supplies remain limited, and available fruit is trending large in size.



## CV BAG POTATOES

**GOOD NEWS!** Pricing on value-line 10/5lb **Russet Potatoes** under the "Spuddy Buddy" program will remain promotable through the end of February. This continues to be the most attractively priced bagged potato option. **Red Potatoes** and **Gold Potatoes** under the "Spuddy Buddy" label from Idaho are expected to begin shipping late January.

"Green Giant" brand **Red, Gold, and Russet Potatoes** are currently shipping from Idaho and are expected to remain so until April. Attractive ad pricing is anticipated across all Green Giant **Red, Gold, and Russet Potatoes** throughout February.





## CV BRUSSELS SPROUTS

**ALERT!** Brussels Sprouts are very limited on the West Coast, with some discoloration and occasional early decay. Broad relief is not expected until early February. Relief is expected to be gradual with markets slow to return to average levels.

**GOOD NEWS!** Belgium Iceless Brussels Sprouts continue to be a strong alternative, though port delays may affect timing and coordination is recommended.



## CV CELERY

**NOTE:** Celery and Celery Hearts have been expensive but markets are easing and pricing is falling sharply, signaling movement past peak levels. Most shippers are reporting improved yields, with broader relief expected later in January. Maintaining tighter turns is advised to avoid holding premium priced inventory in a declining market.



## CV ARTICHOKE

**GOOD NEWS!** Jumbo Artichokes in 12ct packs are promotable with excellent quality and good availability. Pricing is expected to remain firm and workable through the coming weeks.



## CV CAULIFLOWER & BROCCOLI

**GOOD NEWS!** Cauliflower in 12ct packs is steady with good quality and promotable pricing out of California.

**Broccoli Crowns** and **Bunched Broccoli** are seeing steady East Coast supply out of Georgia and North Carolina, with additional volume from West Coast desert production. Quality is clean and competitive across regions.

**Broccoli Rabe** is improving in the fields with steady supply. Pricing has been slow to return to seasonal averages, though markets are beginning to late January.

**Sweet Baby Broccoli** remains steady with mixed shipper positions and pricing. Offers are becoming more aligned as the market balances out over the coming weeks.



## CV CITRUS

**NOTE:** California Citrus harvests have returned to full swing as growers continue to assess damage from prior rainy weather events. Morning moisture and fog are still limiting early harvest hours, shortening harvest days, but supplies are catching up to demand. **ALERT!** Quality challenges remain despite additional grading efforts.

**ALERT!** Mandarins will see most growers transition into "Page" and "Tango" varieties by the end of January, which should result in improved quality and better fill-rates. **ALERT!** "Halos" supplies will remain limited late January.

**Navel Oranges** are seeing excellent availability on larger fruit, which remains highly promotable, while smaller sizes are limited. Larger fruit is expected to dominate Citrus bag programs for the majority of the season. Ask about buys on 36sz Navel Oranges and 8lb Bags.



## LETTUCE

**GOOD NEWS!** Iceberg Lettuce is steady with Arizona desert fields open. Pricing is aggressive and supplies remain consistent.

**GOOD NEWS!** Romaine Hearts are showing improved trims, steadier weights, and drifting lower costs as acreage scales up. Promotable pricing is expected in the coming weeks.

**Leaf Lettuces** including **Green Leaf Lettuce**, **Red Leaf Lettuce**, and **Romaine Lettuce** are benefiting from the desert ramp, which has eased pressure quickly. Availability is plentiful, fills are clean, and pricing is soft enough to support light to moderate promotions.

**NOTE:** Scallions are still expensive but are becoming more available as supplies improve. Pricing relief is expected as volume continues to build later this month.

## OTHER STORIES

**NOTE:** Bag Carrots and Value Added Carrots remain limited as weather in California and Georgia continues to restrict supplies. Bolthouse will remain in the mix until the California desert season opens in February and Georgia production improves late January for Grimmway/Dole.

**NOTE:** Sweet Corn out of Florida is expected to tighten later this month as a strong cold front may impact yields and plant health.



# NEW OR BACK IN SEASON!



Code 239671  
CV Cherries 16/1 lb Clamshell



Code 247719  
CV Nectarine Donut 10/2 lb Clamshell



Code 15642  
CV Peaches 10/2 lb Pouch Bag



Code 243098  
CV Plums Extra Sweet Import  
10/2 lb Clamshell



Code 228965  
CV Grapes Mango Splash 10/1lb Clamshell



Code 234664  
CV Apples Aura 27 lb Stemilt



Code 238380  
CV Apples Aura 12/2 lb Pouch



Code 234361  
CV Pineberries 6/10 oz Clamshell



Code 216872  
CV Tangerines Juicy Crunch FL 40 ct 80sz



# NORTHWEST PEAR DISPLAY CONTEST

January 5 - February 1, 2026



## Want to hear about a “pear”-fect way to build your pear category sales?

Four Seasons Produce has teamed up with the Northwest Pear Bureau to bring you a display contest sure to have you go for the gold in Pear sales and profits. Pears, both conventional and organic, have shown outstanding quality all season. Now is the perfect time to take advantage of some awesome promotional pricing, show off your pear flair, and have the chance to win some super cool prizes. So, “pear” up with your Four Seasons Sales Rep or Merchandiser and get some great plans in place for pear display builds and promotions in your stores!

## CONTEST CRITERIA:

- Build a “PEAR”-fect display of beautiful Pears from the Pacific Northwest. **All fruit MUST be purchased from Four Seasons Produce.**
- **All displays must contain 3 Pear varieties**, either CV or OG (or both). Pear varieties for the duration of this contest will be Anjou, Red Anjou, and Bosc. We will also have Bartletts and Comice while supplies last to help boost the category.
- **Must use Northwest Pear point of sale material** in your displays. Point of sale signs will be provided by your Four Seasons Sales Rep or Merchandiser.
- All displays must remain up for a **minimum of 1 week**.
- Send all display pictures to [contests@fsproduce.com](mailto:contests@fsproduce.com) by **February 5, 2026**.



## CONTEST PRIZES:

### GRAND PRIZE:

Grand prize winner will receive a trip to the Pacific Northwest in September 2026 to view Pear Orchards and packing sheds!



### BEST SMALL STORE DISPLAY (4 registers or less)

- 1st Place - 55in Flat Screen TV
- 2nd Place - Chromebook
- 3rd Place - JBL Bluetooth Earbuds

### BEST LARGE STORE DISPLAY (5 registers or more)

- 1st Place - 55in Flat Screen TV
- 2nd Place - Chromebook
- 3rd Place - JBL Bluetooth Earbuds



PHONE: 1.800.422.8384

| [www.fsproduce.com](http://www.fsproduce.com)







# Envy Apple Display Contest

## January 5 - February 1, 2026

### MAKE YOUR COMPETITION "RED" WITH ENVY...

Four Seasons Produce has teamed up with Envy Apple and The Oppenheimer Group to bring you a display contest sure to make your competition ENVY-ous. Beautiful conventional and organic Envy Apples are ready to promote and make some sweet displays with! High graphic bins and great point of sale materials are available to build some super attractive and creative displays.

### DISPLAY CONTEST CRITERIA:

- **ALL fruit MUST be purchased from Four Seasons Produce** in order to qualify. Your display may contain other apples in it to add some color, but will need to be at least **75% Envy Apples**.
- Must purchase a total of **8 cases of apples** during the contest period in order to qualify for entry. This can be a combination of CV or OG fruit, both bulk and pouch bags.
- **Must use Envy Apple display bins/boxes OR Envy POS signage in/on your displays.** Talk with your Four Seasons Sales Rep or Merchandiser for info on how to grab one of these.
- All Envy displays must remain up for a **minimum of 1 week**.
- Send all contest photos to [contests@fsproduce.com](mailto:contests@fsproduce.com) by **February 5, 2026**.



### ENVY APPLE PRODUCT CODES:

- 238137 - CV Envy 12/2lb pouch
- 6076 - CV Envy 45/55ct 27lb Euro
- 238035 - OG Envy 12/2lb pouch
- 42089 - OG Envy 45/55ct 27lb Euro
- 23377 - POS Envy Display Bins
- 229828 - POS OG Envy Display boxes (brown box)



Really sharp Envy Apple tote bags will be available as well. Please ask your Four Seasons Sales Rep or Merchandiser for detail on how to get some.

For additional Envy Apple information, click on the link below:  
[The Ultimate Apple Experience | Envy Apple](#)

For more information or display tips and ideas, please talk to your Four Seasons Produce Sales Rep or Merchandiser.



PHONE: 1.800.422.8384

[www.fsproduce.com](http://www.fsproduce.com)





JANUARY 16 - JANUARY 23, 2026



# Envy Apple Display Contest

January 5 - February 1, 2026

## DISPLAY CONTEST PRIZES:

### CATEGORIES:

**MOST CREATIVE DISPLAY**

**LARGEST DISPLAY**

**BEST SMALL STORE DISPLAY**  
(3 registers or less)

### PRIZES:

**1ST PLACE: MOUNTAIN BIKE**

**2ND PLACE: SMART WATCH**

**3RD PLACE: NESPRESSO**

\*Pictures shown are  
for demonstration only.  
Actual prize may vary.



There will be **ONE Honorable Mention** in each of the 3 categories above receiving a **Produce Department Pizza Party!**

## EVERYONE IS A WINNER:

**Every qualified entry will receive an Envy Apple/Four Seasons Produce backpack! Check it out!**



For additional Envy apple information, click on the link below:

[The Ultimate Apple Experience | Envy Apple](#)

For more information or display tips and ideas, please talk to your Four Seasons Produce Sales Rep or Merchandiser.



PHONE: 1.800.422.8384

| [www.fsproduce.com](http://www.fsproduce.com)







SugarBee  
Apple



rockit

chelan  
fresh

# SUGARBEE/ROCKIT DISPLAY CONTEST

## FEBRUARY 2 - MARCH 1, 2026



Want to add some “sting” to your Apple category and watch sales blast off? Four Seasons Produce has partnered with Chelan Fresh once again to bring you our annual SugarBee® Apple Display Contest—a promotion guaranteed to create serious buzz in your store.

This year, we’re excited to welcome back the increasingly popular Rockit Apples to the mix. Meanwhile, SugarBee Apples continue to soar, having rocketed to the top of consumers’ shopping lists in recent years. Together, these standout varieties offer the perfect opportunity to build eye-catching displays, drive excitement, and boost apple sales all season long.

## DISPLAY CONTEST CRITERIA:

- Build a BUZZ-worthy display of SugarBee and Rockit Apples in your produce department or store. **All fruit MUST be purchased from Four Seasons Produce** in order to qualify for entry.
- You must purchase a **minimum of 8 cases of SugarBee Apples** and **2 cases of Rockit Apples** during the course of the contest period in order to qualify. This can be a combination of CV and OG fruit.
- **Utilize the high graphic display boxes and bins** in your displays highlighting the SugarBee/Rokit branding.
- All displays must remain up for a **minimum of 1 week**.
- Send all contest photos to [contests@fsproduce.com](mailto:contests@fsproduce.com) by **March 5, 2026**.

### Conventional:

Code 229274

CV Rockit 6/3lb plastic tub

Code 222529

CV SugarBee 40lb 72/88ct

Code 222647

CV SugarBee cider 8-1/2gal

### Organic:

Code 226761

OG Rockit 6/3lb plastic tub

Code 222328

OG SugarBee 40lb. 72/88ct

Code 226404

OG SugarBee 12/2lb pouch

### POS:

Code 223135

CV Display Bin SugarBee

Code 226771

CV Rockit Bin

Code 237756

CV Empty SugarBee box tray pack

Code 242902

CV Empty SugarBee box Euro

Code 242903

OG Empty SugarBee box tray pack

Code 237757

OG Empty formed Rockit box

Code 238037

OG Sugar Bee Bin

## DISPLAY CONTEST CODES:



Code 223135



Code 226771



Code 237756



Code 242903



Code 237757



Code 242902



PHONE: 1.800.422.8384

| [www.fsproduce.com](http://www.fsproduce.com)







# SUGARBEE/ROCKIT DISPLAY CONTEST

**FEBRUARY 2 - MARCH 1, 2026**

## DISPLAY CONTEST PRIZES:

### THE QUEEN BEE - GRAND PRIZE:

An all-expenses-paid trip to Washington State to experience the cherry harvest in late July 2026! Winners will tour cherry orchards, visit Chelan Fresh packing sheds and facilities, and get an inside look at how cherries move from tree to box to your displays and counters.

**2  
WINNERS**

**1 Large Store**  
(5 registers or more)  
**1 Small Store**  
(4 registers or less)



### GRAND PRIZE DISPLAY WILL BE JUDGED AS FOLLOWS:

Grand Prize winners will be chosen on creativity, overall eye appeal, use of SugarBee point of sale, and % of increase YOY. We will need scan data from stores in order to qualify.

#### “BEE CREATIVE”

Most Creative Display:

**1ST: \$300**

**2ND: \$200**

**3RD: \$100**

**HONORABLE MENTION:**

**\$50**

#### “THE BEE COLONY”

Largest Display:

**1ST: \$300**

**2ND: \$200**

**3RD: \$100**

**HONORABLE MENTION:**

**\$50**

#### “BABY BEE”

Best Small Store Display:

**1ST: \$300**

**2ND: \$200**

**3RD: \$100**

**HONORABLE MENTION:**

**\$50**



For pricing information or tips on building your next “Bee” masterpiece, please reach out to your Four Seasons Sales Rep or Merchandiser.

Thank you for your continued trust and support of Four Seasons Produce.



PHONE: 1.800.422.8384

| [www.fsproduce.com](http://www.fsproduce.com)







## STEMILT WORLD FAMOUS APPLE & PEAR DISPLAY CONTEST WINNERS

OCTOBER 13 - NOVEMBER 9, 2025

# GRAND PRIZE:



## HENNING'S SUPERMARKET

Harleysville, PA

## LARGEST DISPLAY:

### FIRST PLACE

### SECOND PLACE

### THIRD PLACE



**COMMON MARKET 7TH STREET**  
Frederick, MD



**KIMBERTON WHOLE FOODS**  
Collegeville, PA



**KIMBERTON WHOLE FOODS**  
Douglasville, PA



PHONE: 1.800.422.8384 | [www.fsproduce.com](http://www.fsproduce.com)







## MOST CREATIVE DISPLAY:

### FIRST PLACE

### SECOND PLACE

### THIRD PLACE



**SOULBERRY NATURAL MARKET**  
New Hope, PA



**COMMON MARKET ROUTE 85**  
Frederick, MD



**MILLER'S FOOD MARKET**  
Manchester, MD

## BEST LIL SNAPPERS DISPLAY:

### FIRST PLACE

### SECOND PLACE

### THIRD PLACE



**MOTHER EARTH STOREHOUSE**  
Kingston, NY



**WEAVERS MARKET**  
Adamstown, PA



**ROOTS MARKET**  
Clarksville, MD

## BEST PEAR DISPLAY:

### FIRST PLACE

### SECOND PLACE

### THIRD PLACE



**WEAVERS WAY CO-OP GERMANTOWN**  
Philadelphia, PA



**KIMBERTON WHOLE FOODS**  
Wyomissing, PA



**WEAVERS WAY CO-OP**  
Ambler, PA



PHONE: 1.800.422.8384

| [www.fsproduce.com](http://www.fsproduce.com)

