

# ORGANIC MARKET NEWS



SEPTEMBER 9 - SEPTEMBER 16, 2022

## LADY MOON LOCAL ORGANIC FALL VEG



Premium local **Organic Greens** are back in season as Lady Moon Farms starts their Fall program in Pennsylvania!

**Organic Chards, Collards, Dandelions, Kales & Parsleys** from Lady Moon Farms in Chambersburg, PA have begun harvest and are entering the peak Fall season. As temperatures drop, supplies will continue to increase in September until mid-October when the Pennsylvania season concludes.

Promotional opportunities will be available on **Organic Greens** during September. Production from local Pennsylvania and New Jersey suppliers will be available throughout September. Make sure to highlight "Local" while carrying these items.

**Organic Grape and Cherry Tomatoes** from Lady Moon Farms will continue in season through most of September.

Organic Summer Vegetables, such as **Organic Eggplant, Green Bell Peppers, Jalapeño Peppers** and **Zucchini** from Lady Moon Farms in Chambersburg, Pennsylvania & other local growers are winding down for the season. Product will be around through most of this month however, volumes will slow significantly. New crop **Organic Zucchini** from Lady Moon's Florida farms has begun harvest in early September creating a seamless transition to their Florida season.



### OG BROCCOLI

**ALERT!** **Organic Broccoli** remains expensive and in limited volumes for the week of 9/12.

The good news is that **Organic Broccoli** is showing promising signs of returning to more normal levels for the week of 9/19. Prices jumped to kick off September when production dropped down to 50% due to high heat and the Labor Day holiday.

**ALERT!** **Organic Broccoli Crowns** are slightly behind schedule compared to the bunched product due to the development of the crown size.

Expect volume and pricing improvements to be about a week behind bunched production. Supplies from Quebec continue to be available to help supplement supply, however, volumes remain limited.



### OG GRAPES

Mid-September through mid-October should be one of the best times of the year to promote **Organic Grapes** from California.

**Organic Red Grapes** will now be mostly "Scarlett Royals" along with some "Sweet Celebrations" and "Jack Salutes". These varieties will have nice size, crunch, and flavor.

**Organic Green Grapes** are in great supply with excellent quality on "Sweet Globes" and "Great Greens" with good crispiness and size.

The following **Organic Specialty Grapes** will be available the week of 9/12 in 1 lb clamshells: **Candy Dreams** (super sweet, black/purple), **Candy Hearts** (super sweet, red), **Sweet Carnival** (similar to Cotton Candy), **Thomcord** (seedless, cross of Concord and Thompson)



### OG GREENS

**ALERT!** **Organic Romaine** and **Romaine Hearts** continue to have very limited supply volume during September.

California growers are yielding about half of their expected volume currently. The main culprit for the shortage is the disease called "INSV" which causes leaf items to completely die in the field before full maturity. This issue is expected to persist into October, and the worst-case scenario is that the Organic Romaine situation may not improve until we reach the new crop desert season in November. Higher prices and low volumes are likely to prevent ad promotions until after Thanksgiving.

**NOTE:** **Organic Leaf Lettuces** have begun to have reports of "INSV" that will lighten supply volume in mid-September.

A small bright spot is that **Organic Romaine** and **Leaf Lettuce** production from Quebec continues to have decent availability and excellent quality to supplement shortages from the West Coast.



## OG CAULIFLOWER

**NOTE: Organic Cauliflower** production from California remains low in mid-September, with expectations of current conditions continuing possibly into October. Quality conditions are creating difficulties in making an acceptable box.

Quebec supplies as a supplement are not an option as they are gapping in production currently. With about 50% of expected volume; low volumes and rising costs should be expected throughout the remainder of September.



## OG CUCUMBER

**Organic Cucumbers** from Mexico continue steady availability after a turbulent local season. Quality has been strong and pricing remains average in September from Mexico.

**Organic Cucumbers** from Florida will begin harvest in mid to late September for Lady Moon Farms. Volumes are expected to increase quickly and quality is expected to be top-notch.



## OG CELERY

**Organic Celery & Celery Hearts** remain in strong production in mid-September with continued promotional opportunities.

**OUTLOOK:** As late September approaches volumes will begin to suffer creating price increases and less availability. Traditionally, mid to late October and November can be difficult months for Celery so promote while quality and availability are strong!



## OG ASPARAGUS

**Organic Asparagus** is at the tail end of the Mexico season and at the front end of the short Argentina season. Pricing is on the higher side.



## OG ONIONS

We will transition over to a new crop of Nevada grown **Organic Red, Yellow, and White Onions** towards the middle of September.

As we make this transition to Nevada, the medium **Red** and **Yellow Organic Onions** will be limited until we get into the Nevada crop. Once we get into Nevada, we will see ample supplies.



## OG HARD SQUASH

**Organic Hard Squashes** are in peak season from local farms with good availability on the main three: **Acorn, Butternut, Spaghetti.**

Local Organic Specialty Hard Squashes are also in season including: **Organic Pie Pumpkins, Honey-nut, Kabocha, and Delicata.**



## OG AVOCADOS

**Organic Avocados** are in season from Mexico with good supply. Pricing is becoming more advantageous for promotion as we move closer to Fall.



## OG CUBED BUTTERNUT

Olivia's **Organic Cubed Butternut Squash** is coming back into season for the Fall and Winter months.

This 6/20 oz pack (FSP Code: 41568) is a best seller and popular convenience item. Supplies will ramp up in stock around 9/15.



## OG CANTALOUPE

**Organic Cantaloupes** are in great supply with excellent quality. Pricing on 9 ct is reasonable, making this item super promotable through September.

**Organic Cantaloupe** and **Honeydew** will get tighter from California headed into October when they start to go out of season.



## OG PEPPERS

**Organic Color Bell Peppers** from Holland and Canada experienced slightly less production in late August and early September which kept pricing on the higher side.

**OUTLOOK:** In mid-September expect to see supplies bounce back and help prices become more affordable. Quality has remained outstanding throughout both growing region's seasons.



## OG WATERMELONS

**Organic Mini Watermelons** will begin to transition back out to California during mid-September. Pennsylvania Local growers are finishing up after an excellent season. Quality has been excellent on all arrivals.



## OG LEMONS

**NOTE:** **Organic Lemons** have been a bit expensive and not in the steadiest of supplies during late summer.

Improved supplies are expected as Western growers begin ramping up through the middle of September and be in excellent supply once we move into October.



## OG APPLES

Washington **Organic Honeycrisp Apples** are in a short gap as we transition between old crop storage fruit and freshly harvested new crop. Growers are reporting less red blush in their early harvests of new crop.

New crop **Organic Gala Apples** from Washington are in peak season with the size profile heavy to 100 sz and smaller.

Import **Organic Granny Smith** will finish for the season in mid-September and then we may see a limited shot of California fruit before we get started in new crop Washington in October.



## OG TOMATOES

**Organic Hothouse Beefsteak Tomatoes** out of Canada will be gapping until the Fall. This gap will be filled with **Organic Beefsteak Tomatoes** from Hoop House field production from Ohio and Pennsylvania in 15 lb flats.

We have **Organic Vine Ripe Round Tomatoes** from King Family Farm in Pennsylvania. Availability is expected to start to decline the closer we are to October.

**Organic Heirloom Tomatoes** continue in peak season from Lady Moon Farms out of Chambersburg, PA for mid-September.



## OG BERRIES

**Organic Blackberry** prices are rising slightly. Volume has been steady and quality has been good. The high heat in California is limiting harvest hours slightly affecting volumes, however, demand has remained soft.

**Organic Blueberry** pricing are rising as the Pacific Northwest crops begin to finish up. Peruvian fruit has been coming in steadily but prices are rising as less fruit is in the marketplace. Quality from both regions has been good to excellent. Supplies will be steady.

**NOTE:** **Organic Raspberry** pricing will be limited out of California. High temps are keeping the fruit on the plants creating heavy pro-rates as crews cannot harvest. Quality has been good and expects pro-rates.

**Organic Strawberry** markets remain steady out of CA. Quality has been fair-good from shippers as the high temps are leading to higher bruising. This is not limited to any on the shipper, keep fruit turning as supplies are steady.

## OTHER STORIES

**Organic Peaches, Nectarines, and Plums** will wrap up from California and Washington by late September. The Stemilt Washington fruit on Yellow Peaches has been excellent.

**Organic Bi-Color Corn** will sell out from local farms by mid-September and go out of season until California starts in April or May of 2023.

fornia starts in April or May of 2023.

**ALERT!** **Organic Cut Veggies and Snap Peas** from Earthbound are experiencing lower fill rates due to the California heat wave impacting yields and quality on several vegetables during September.

**NOTE:** **Organic Packaged Salads** are seeing some fill rate and quality challenges on certain SKUs due to the "INSV" disease impacting romaine and some of the tender leaf items.



# SEPTEMBER IS NATIONAL MUSHROOM MONTH



September is Mushroom Month, and Four Seasons Produce is celebrating this super month of “Fun”-gi with some great promotional opportunities on mushrooms!

Mushrooms are one of the fastest growing categories in the produce department and September is the perfect month to promote. Now is a great time to start thinking about expanding your mushroom sets and sections by

adding new varieties or make a statement with a dynamic standalone display sure to wow your customers.

Mushrooms are one of the most versatile commodities in the produce department. So many uses, from being used as meat substitutes to side dishes to main course, the mushroom category covers it all. There truly is a mushroom for every occasion!

## LEARN A BIT ABOUT OUR MUSHROOM PARTNERS:



**Mother Earth Mushrooms**



**Mushroom King Mushroom Farm**

## MUSHROOM FACTS:

- Mushrooms are 90% water and double in size every 24 hours.
- Mushrooms do not need sunlight to grow.
- It takes three weeks to produce the first mushrooms for picking.
- One portabella mushroom has more potassium than one medium banana!
- On average, one square foot of space in a mushroom bed can produce over six pounds of mushrooms.



So let's get a start on mastering the mycelia and growing your mushroom category! Talk with your Four Seasons Sales Rep or Merchandiser and plan a date to expand on your current offerings to sell more mushrooms!



PHONE: 1.800.422.8384

| [www.fsproduce.com](http://www.fsproduce.com)



# APPLE CIDER SEASON



**ZEIGLER'S**



	AVAILABILITY	CODE	DESCRIPTION	PK/SZ	UPC
	Available Now	6226	CV Cider Apple	9-1/2 gal Zeigler's	034256000644
	Available Now	3247	CV Cider Apple	4/1 gal Zeigler's	034256001283
	Available Now	226005	CV Cider Cinnamon Spice	9-1/2 gal Zeigler's	034256250643
	Available Now	226006	CV Cider Carmel Apple	9-1/2 gal Zeigler's	034256270641
Available Sept Only	9/9/22	226007	CV Cider Apple Gala Blend	9-1/2 gal Zeigler's	034256010643
Available Oct-Dec	10/7/22	225997	CV Cider Apple Honeycrisp Blend	9-1/2 gal Zeigler's	034256040540
Pre-order	9/23/22	222020	CV Cider Autumn Harvest	4/1 gal Zeigler's Shelf Stable	034256251282
Pre-order	9/23/22	222021	CV Cider Autumn Harvest	9-1/2 gal Zeigler's Shelf Stable	003425625064



**Country Acres**  
APPLE CIDER  
Quality Blend



	AVAILABILITY	CODE	DESCRIPTION	PK/SZ	UPC
	Available Now	6165	CV Cider Apple	4/1 gal Country Acres	831134000105
	Available Now	6167	CV Cider Apple	9-1/2 gal Country Acres	831134000785
	Available Now	222097	CV Cider Apple	12/16 oz Country Acres	831134000532
	End of Sept	226659	OG Cider Apple	9-1/5 gal Country Acres	831134000518



# Driscoll's BIG Pack Blueberry Contest Winners

## July 18 - August 14, 2022

The results for our first ever BIG Pack Blueberry Display Contest are in! We had a stellar month of selling fresh Driscoll's blueberries in stores and getting in some fun builds to create some excitement! Check out some of the winners and honorable mentions below. Thank you to everyone who participated in this amazing contest!



### FIRST PLACE

Berkshire Food Co-op - Great Barrington, MA



### SECOND PLACE

Kennie's Market - Taneytown, MD



### THIRD PLACE

Honest Weight Food Co-op - Albany, NY



### FIRST PLACE

Brattleboro Food Co-op - Brattleboro, VT



### SECOND PLACE

The Common Market - Frederick, MD



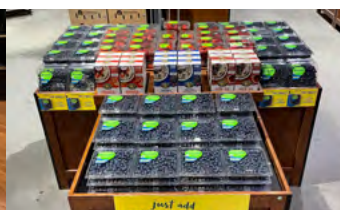
### THIRD PLACE

Takoma Park Co-op - Takoma Park, MD



### HONORABLE MENTION

Kennie's Market - Gettysburg, PA



### HONORABLE MENTION

GreenStar Food Co-op - Ithaca, NY



### HONORABLE MENTION

A Matter of Health - Nanuet, NY



### HONORABLE MENTION

Friendly City Food Co-op - Harrisonburg, VA



PHONE: 1.800.422.8384

www.fsproduce.com



# CONVENTIONAL MARKET NEWS

SEPTEMBER 9 - SEPTEMBER 16, 2022

## SEPTEMBER SPECIALTY FRUIT

Here's an update on some of the specialty or seasonal fruits that will be available during mid-to-late September:

- **Black Mission Fresh Figs** are selling well in the 12/8 oz clamshells with peak season flavor.
- Early varieties of **Pomegranates** are in season with 36 ct fruit. Larger sizes will come on during October.
- **Rambutan** is in season in 5 lb bulk and 6/12 oz packaged options.
- **Starfruit/Carambola** is in season with nice quality.
- **Quince** is coming into season for the Fall with 32/36 ct fruit.
- Late summer crop **Dragon Fruit** is available out of California in both white and red flesh varieties. Supplies should be decent through the week of 9/19
- On the berry front **Driscoll's** will have small volumes of their **Rosé Strawberries**, **Sweetest Batch Strawberries** and brand new **Tropical Bliss Strawberries**.



### CV TOMATOES

**Snacking Specialty Tomatoes** from Nature Sweet will be promotable through September and into October with promotions on various varieties. Availability is excellent and quality has been superb on all inbounds. A promotion is currently available on the **Comet Tomatoes** and a promo/display contest on **Constellations** is in the works for October.

**Grape Tomatoes** continue to arrive from Sam Zook out of PA in the Native Grown PA label. Quality has been outstanding, and production will allow us to support this label primarily during mid-September.

**Tomatoes On the Vine** pricing will increase as we head into mid-September due to rugose and other disease pressure. Quality has been good on all inbounds, but the heat is also causing tomatoes to turn quicker than usual.



### CV PUMPKINS

**Pumpkin** crops are looking great! The heat has brought on crops early so expect excellent availability through September and early October. That said, with an earlier start growers expect an earlier finish this Fall.

**Face Pumpkins** and **Heirloom/Specialty Pumpkins** are expected to be plentiful this year with no issues with labor or supplies or quality. Pricing is expected to be very close to the start of last year with a slight increase due to increasing costs all around this year.

**Fall Ornamentals** and **Decoratives** are available for themed display builds - everything from **Gourds**, **Indian Corn**, **Straw Bales**, **Corn Stalks**, and more.

In recent years some of the best sellers have been miniature items like **Jack Be Littles**, **Baby Boo**, and **Tiger Stripe Pumpkins**, which can be displayed both inside and outside and are easy for consumers to take home and to the office.



### CV GRAPES

**HEAT WAVE NOTE:** A week of record-setting heat in California's Central Valley is causing difficulty. Harvest days have been cut in half and most vineyards are canopied to keep the grapes from cooking. Growers consider this time to still be pick season vs. pack season so this is causing challenges in getting full orders loaded. Many growers noted there is a lot of fruit in the pipeline, so we should see some spot buy deal pricing on large and medium-large **Red** and **Green Grapes** in our value lines in the upcoming weeks.

On premium grade **Grapes**, **XL Red Grapes** continue excellence in quality as we transitioned into better varieties (Sweet Celebration, Scarlett Royal, and Jack Salutes). **XL Green Grapes** are still in great supply with excellent quality as we transition into good varieties there too (Great Greens, Sweet Globes/Green Emeralds, Autumn Kings, and Stella Bella).



## CV LOCAL BIN VEG

Local PA growers are getting started in mid-September on their **Stem Broccoli** and **Jacket Cut Cauliflower** programs.

**Stem Broccoli** will be available in 110 ct bins (FSP Code: 631) and **Jacket Cut Cauliflower** will be available 60 ct bins (FSP Code: 999).

Volumes will be limited during September but ramp up in October. These products can add to a local farm market look in your store.



## CV CUCUMBERS

**Cucumber** pricing is expected to remain steady through the middle of September. The local product started into its second plantings. There is a Product coming out of New Jersey and Pennsylvania. Quality is outstanding in the new fields.

**NOTE:** Cello Seedless Cucumber pricing is expected to remain high during September while volumes are low. New crop plantings will start to increase in October out of Canada.



## CV CITRUS

Import **Navel Oranges** from South Africa and Chile continue to remain excellent with the following sizes available: 56ct, 72ct, 88ct, and 9/3lb.

Import **Cara Cara's** and **Minneola's** are in season to add variety to displays. Import **Mandarins** are available at a value for September.

Look for new crop **Juice Oranges** from Florida to start around early October.



## CV ASPARAGUS

**Asparagus** prices have been on the high side but are poised to inch down as more volume comes into the market from new fields in Peru and Mexico.

Weather is causing the slow production of the new crops in Mexico which would typically cause the flush and drop in the market price as we head into September. The quality has been good.



## CV PEPPERS

**Green Pepper** prices will be promotable as we head into mid-September. There is a lot of quality jumbo fruit out there and shippers are looking to deal. We will continue to source products from NJ, DE, and PA. The quality has been excellent!

11 lb **Hothouse Pepper** pricing has dipped for the **Yellow** and **Orange** as Canada flushes and Mexico is coming into the market. Red are priced higher than the other two.



## CV LETTUCE

**ALERT!** Fresh Express and other salad producers are warning of other fill rate issues ahead as growers struggle with "INSV" disease in their fields decreasing yields throughout late Summer and Fall.

These same issues are keeping **Iceberg Lettuce**, **Romaine Hearts** and other **leaf products** on the expensive side.



## CV PARSNIPS

**ALERT!** **Parsnips** in 20lb and 12/1lb supplies continue to be out of stock. Supplies are to return by the end of September.



## CV ONIONS

**Onions** continue to be slightly limited through the first week of September as we make the transition over to new crop-growing regions.

We are poised to make the transition from Pennsylvania **Simply Sweet Onions** over to new crop **Peruvian Mayan Sweet Onions** through the middle of September.



## CV CAULIFLOWER

**Cauliflower** pricing has inched up as production has been less stable in California. Quebec and Maine have less production for mid-September.

**Purple, Green, and Orange Cauliflower** are available from California.



## CV PLANTAINS

**ALERT!** The pricing for **Plantains** has tightened up significantly over the beginning of September. Supply is expected to be very tight because of storms in the tropics. Dole also lost an entire container at sea so that has caused the supply to be even tighter.



## CV BROCCOLI CROWNS

**Broccoli Crowns** quality remains beautiful. Pricing is poised to inch up on Crowns since the nights are getting cooler in Maine, and California growers are dealing with hot temps. Both regions will have a little less volume moving forward.



## CV APPLES

PA/NY **Gala Apples** are in season peaking on 100 sz and smaller, ideal for bags and totes.

Storage crop and import **Fuji Apples** will finish for the season over the start of September, and gap until the last week of September when new crop begins in Washington followed up by a new crop of PA/NY fruit in mid-October.

**Honeycrisp Apples** out of Washington are transitioning from old crop to new crop, expect to see some lighter color blush on the new crop fruit. Eastern **Honeycrisp Apples** are in good steady supply with excellent quality.

Storage crop **Red Delicious Apples** out of Washington will wind down during September and may gap briefly until new crop starts in October. New crop **Red Delicious** from PA are now starting up for the season.



## CV GRAPEFRUIT

**Grapefruit** crop has transitioned into **Summer Rubies** in California, so expect lighter internal color than the **Star Rubies**.

Florida **Grapefruit** will start in October.



## CV EGGPLANT

**Eggplant** pricing will be promotable during September with abundant product available from local PA and NJ farms!



## CV BERRIES

**Blueberry** pricing is strong as the imported fruit from Peru. Arrivals are coming in and supplies have been steady. Stronger volume is expected to arrive as we get deeper into September. The quality has been excellent, and packs with Jumbos are available.

**NOTE:** **Raspberry** pricing will become more expensive as the heat wave in California has really cut down on the volume. Mexico has started harvesting fruit as well keeping the supply line full. Quality has been fair-good but keeps fruit turning to ensure optimal quality to customers.

**Strawberry** pricing remains steady. Pricing has come off some to keep fruit moving steadily. **NOTE:** The high temps are creating some bruising issues on the quality. This is an industry issue not limited to any one shipper. Keep fruit moving and turning product.



## CV MELONS

We are slowly finishing up our variety melon season but will be offering hot deals on **Dino Melons** the next week. **Honeydew** remains tight due to limited planting, look for light supply going forward and peaking on larger size fruit.



## CV WATERMELON

**Watermelon** pricing remains steady. Delaware and North Carolina growers continue to supply steady volume as demand for bin Watermelons begins to decrease. The quality has been exceptional. We will continue to offer bins and cartons.



## CV STONE FRUIT

Late crop **Cherries** will finish out of Washington through the middle of September for the season and gap until imports begin in December.

**Nectarines** are expected to wrap up for the season during mid-to-late September.

**Peaches** will continue in season through September on the West Coast. Local Pennsylvania **Peaches** have finished, and New Jersey fruit is expected to finish within the middle of September.

California **Donut Peaches** are in excellent supply and are expected to stay this way until the end of September.

# PUMPKINS & FALL ORNAMENTALS

STARTING SEPTEMBER 2022

## MINI DECORATIVES/ORNAMENTALS



Code: 4822

**JACK-BE-LITTLE (MINI-PUMPKINS)**

40 ct case

PLU: 4734



Code: 4929

**JACK-BE-LITTLES BAGGED**

14/5 ct case

UPC: 743425-08950



Code: 214521

**WHITE JACK-BE-LITTLES (BABY BOO)**

40 ct case

PLU: 4734



Code: 4901

**INDIAN CORN**

16/3 ct case

UPC: 033383-40077



Code: 214039

**MINI INDIAN CORN**

Display box 16/3 ct case

UPC: 743425-40076



Code: 4944

**PUMPKIN LITTLES**

(Hardball size Pumpkin)

20 ct case

PLU: Retailer-Assigned



Code: 4913

**TIGER STRIPE/POKEMON PUMPKINS**

20 ct case

PLU: Retailer-Assigned



Code: 232524

**GOURDS BAGGED**

12/6 ct case

UPC: 7-46309-12347-6



Code: 4930

**GOURDS**

40 ct case

PLU: 3135

## MINI DECORATIVES/ORNAMENTALS



Code: 4950  
**BABY PAM (PIE)**  
12 ct case  
PLU: 3134



Code: 4945  
**CORN STALKS**  
1 bunch  
PLU: Retailer-Assigned



Code: 4935  
**REGULAR SIZE STRAW BALES**  
1 ct  
PLU: Retailer-Assigned



Code: 222242  
**MINI CELLO STRAW BALES**  
50 ct  
21879-20080  
*\*Pre-Order Survey Only\**



Code: 222243  
**SMALL SINGLE STRAW BALE**  
24 ct  
*\*Pre-Order Survey Only\**



Code: 229043  
**CORN STALK HORSE**  
*\*Available by request\**



For more information on  
pre-ordered painted pumpkins &  
kits, contact your sales rep!



## PUMPKIN BINS



### CARVING/JACK-O-LANTERN/FACE PUMPKIN BIN

PLU:3130

4984 - CV Pumpkins Face 40 ct bin  
4982 - CV Pumpkins Face 50 ct bin

4981 - CV Pumpkins Face 30 ct bin  
4987 - CV Pumpkins Face 60 ct bin



### PRIZE WINNER PUMPKINS

4994 - CV Pumpkin Prize Winner 100-170 lb

*\*Available by request\**



### FIELD TRIP/MYSTIC PUMPKINS W/ LONG STEM BIN

*(For painting or decorating)*

7390 - CV Pumpkins Field Trip 140 ct bin

*\*Available by request\**



### PIE (BABY PAM) PUMPKINS BIN

*(For baking or decorating)*

4951 - CV Pumpkins Baby Pam (Pie) 150 ct bin - PLU: 3134

*\*Available by request\**

## MIXED VARIETY PUMPKIN BINS



Code: 4968

### "AUTUMN MIX" PUMPKIN BIN 35 CT

*(Blue Jarrahdale, Pink Porcelain, Peanut)*

*\*Varietal mix is subject to change due to availability\**



Code: 4980

### "FALL FANTASY" PUMPKIN BIN 35 CT

*(Fairytale, White Flat, Cinderella)*



PHONE: 1.800.422.8384

| [www.fsproduce.com](http://www.fsproduce.com)



## PUMPKIN VARIETAL BINS - AVAILABLE BY REQUEST



**WHITE PUMPKIN BIN**



**BLUE JARRAHDALE PUMPKIN BIN**



**PEANUT PUMPKIN BIN**



**ONE TOO MANY PUMPKIN BIN**



**WARTY GOBLIN /  
KNUCKLEHEAD PUMPKIN BIN**



**LONG NECK GREEN SQUASH BIN**  
(Goose Gourds)

