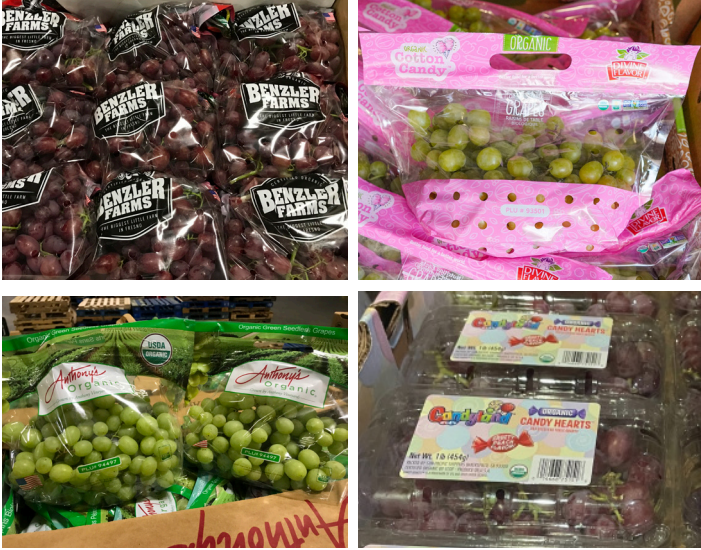


ORGANIC MARKET NEWS

SEPTEMBER 2 - SEPTEMBER 9, 2022

ORGANIC GRAPES FOR SEPTEMBER



September will be one of the best months of the year to promote in-season **Organic Seedless Grapes** while the California crop is peaking on excellent varieties and prices are reasonable!

Organic Red Grapes are transitioning into nicer varieties like "Sweet Celebrations," "Scarlett Royals," and "Krissy".

Organic Green Grapes are in great supply with excellent quality with "Timpsons," "Sweet Globes," and "Great Greens." Size and crunch are very good.

September will also be a good month to add some **Organic Specialty Grapes** to your sets.

Starting on 9/7, the following will be available in UPC'd 1lb clamshells in the "Candyland" brand: **Organic Candy Hearts** (super-sweet red) and **Candy Dreams** (super-sweet purple/black).

Organic Thomcord Grapes are also continuing in peak season.

NEW: Organic Cotton Candy Grapes are harvesting for a very short window. 10/1lb clamshells



OG APPLES

New crop Washington **Organic Gala Apples** are in good supply. Sizing is peaking on smaller fruit, so bags and pouches will be fairly promotable this fall. Expect 88 and larger fruit to command higher prices.

Storage crop **Organic Honeycrisp Apples** have come to an end and the 2022 new crop color is very light, causing a dip in premium grade fruit. There will be some promotional opportunities on lower grade fruit that has less red blush. Peak volumes will arrive from Washington by mid-September.

Storage crop domestic and import **Organic Apples** are winding down for the season on several varieties. Some import **Organic Fuji** and **Granny Smith Apples** are still lingering but will probably have a small gap before new crop begins sometime near the beginning of October.

Domestic **Organic Pink Lady Apples** are done for the season, and we will transition to imports through October. New crop Washington will arrive in November.



OG TROPICALS

Organic Hass Avocados remain steady, if not promotable, though the beginning of September. Peruvian fruit is starting to wrap up, so most of the volume will be out of Mexico.

UPC'd 8/4ct recyclable cardboard packs of "Equal Exchange" **Organic Fair Trade Hass Avocados** are available in code 231906.

Organic Green Skin Avocados from Florida are in peak season for early September.

"Non-Hot Water Treated" (NHWT) **Organic Mangos** will be in season in early September out of Mexico. This fruit is prized for its excellent eating quality due to being ripened on the tree longer.

NOTE: Organic Pineapple volumes will continue to be lower for the start of September for 6 and 8ct fruit. Rain has become a factor in Costa Rica, which is the primary growing spot for this fruit.



OG BERRIES

Organic Blueberries will be promotable coming from California and Oregon. This will be a 1-week promotion at the beginning of September before prices rise quickly for the rest of the month. Peruvian import fruit is available as well, and quality has been excellent.

Organic Raspberries and **Blackberries** are steady out of California with good quality. Mexico is expected to start in late September – early October.

Organic Strawberries harvests remain limited out of California. Demand has softened overall with higher price points for the change of season, leading to better availability even though production is low. Quality has been good.



OG LADY MOON VEG

Organic Green Bell Peppers and **Zucchini** from Lady Moon Farms in Chambersburg, PA are ending for the summer season from PA, but **Organic Eggplant** and **Jalapeño Peppers** will continue to produce a little longer into September before winding down.

Organic Zucchini from Lady Moon's Florida farm will begin harvesting in mid-September, leaving only a short supply gap of Lady Moon brand during early September when we will fill in from other growers in New England.



OG MELONS

Organic Cantaloupes and **Honeydew** are in season with excellent quality from California. **Organic Cantaloupes** will be promotable on price for early September, then volumes will drop towards the end of the month.

Most of the **Organic Mini Watermelon** supplies are coming from local farms in PA and OH. California is also harvesting steady supplies as well. Quality has been excellent.



CV SWEET CORN

Organic Bi-Color Sweet Corn is beginning to wind down for the local PA and NY season as September begins. New York production has all but finished for the season during the final week of August, while PA supplies will last into mid-September with lighter supplies.

Expect prices to increase and availability decrease before the season comes to an official close.



OG GREENS

Local **Organic Collards**, **Kales**, **Chards**, and **Dandelion** have begun harvesting once again from Lady Moon Farms in Chambersburg, PA. As temperatures begin to cool, supplies will increase and continue until early to mid-October in PA.

Expect supplies on other **Organic Greens** from PA to begin to become available in early September as well.



OG HARD SQUASH

Local Pennsylvania growers are ramping up their peak season for **Organic Hard Squash**.

Organic Acorn, **Butternut**, **Delicata**, **Kabocha**, and **Spaghetti Squash** are in good availability.

Organic Pie Pumpkins will be in stock for early September as well.



OG ONIONS

Local PA **Organic Sweet Onions** continue to be a great item to promote, and we will see this market last through mid-September.

Organic Red, **Yellow**, and **White Onions** will transition over to new crop Nevada by mid-September where excellent quality is expected. During the transition, volumes could get tricky. **Organic Yellow Onions** are expected to be limited during this transition time, then be in peak season later in the fall.



OG TOMATOES

Local **Organic Grape** and **Cherry Tomatoes** are plentiful in PA.

Organic Vine Ripe Round and **Roma Tomatoes** from King Family Farm are available and increasing with the heat. Availability is expected to then decline by mid-September.



OG STONE FRUIT

Organic Yellow Peaches and **Nectarines** are hitting the last varieties and harvests of the season. Volumes and availability will wind down by late September. Flavor and quality have remained good out of Washington.

We are in the last few weeks of **Organic Red** and **Black Plums** from California. Prices are on the high side with supplies a bit sporadic.



OG CITRUS

Organic Lemons remain limited, but Mexico and California should ramp up new crop growing regions more fully by October.

Peruvian **Organic Mandarins** are done for the season. Some **Organic Minneola Tangelos** are expected back for mid-September selling. California **Organic Valencia Oranges** are in better supply than growers expected during September.



OG FRESH FIGS

Organic Fresh Brown Turkey and **Black Mission Figs** continue to be in great supply. **Organic Green Sierra Figs** will be very limited as the season moves along. This variety is not holding up being brought across the country.



OG SPECIALTY CITRUS

The 2022 fall crop of Buck Brand **Specialty Citrus** from Porterville, CA is up and running. Available for early September in limited volumes will be: **Organic Key Limes**, **Pink Variegated Lemons**, and **Makrut Limes**. More varieties will pop in and out during the fall and winter.



OG SWEET POTATOES

New crop **Organic Stokes Purple Sweet Potatoes** are back in season with the first arrival hitting the east coast on 9/6.

AV Thomas/Natural Beauty brand will transition the rest of their **Organic Sweet Potato** varieties over to new crop during mid to late September.



OG LETTUCE

ALERT! **Organic Romaine** and **Romaine Hearts** will continue to experience extremely light supplies in early September. For most California suppliers, the crop is currently yielding about half of its expected volume for this time of year due to the "INSV" disease. This issue is expected to persist into mid to late September before improvements. Limited supplies and elevated prices should be expected throughout September.

Good news: **Organic Iceberg Lettuce** is currently not seeing any sign of INSV and expect strong quality and supplies in early September.

Organic Leaf Lettuces are currently not suffering from disease or yield issues, but increased demand due to supply shortages on **Organic Romaine** has kept pricing higher. **Organic Romaine** and **Leaf Lettuce** production from Quebec remains in steady supply with great quality to supplement shortages from the West Coast.



OG BROCCOLI & CAULIFLOWER

Organic Broccoli and **Organic Cauliflower** production is down for the beginning of September.

ALERT! **Organic Broccoli** growers will hold off harvesting until after Labor Day. Pricing is up, since yields were already lower to kick off the month out in California. There will be only limited amounts available from Quebec to supplement. Check your price points.

ALERT! **Organic Cauliflower** crops are only yielding about half of expected volume for this time of year. Growers are reporting that these issues could persist throughout much of September. There's just not enough out of Quebec to supplement the gap in west coast volume.

ALERT! **Organic Broccoli Rabe** is in short supply for early September.



OG CUCUMBERS

NOTE: **Organic Euro Seedless Cucumber** prices have increased and are expected to remain steady until Canada comes back into volume with new crops. There may be gaps in availability due to limited supply. Quality and availability are outstanding.

NOTE: **Organic Mini Seedless Cucumbers** have tightened up a bit as many shippers have already started to transition their crops. Quality is excellent but there is not a lot of product around. This should increase as we head into the middle of September.

Expect steady supplies and improved pricing on **Organic Cucumbers** from Mexican growers in September. Quality has been strong from Mexico.

Local **Organic Cucumbers** have suffered from quality issues throughout the summer season and we are now considering this local crop done.

OTHER STORIES

- **Organic Celery** and **Celery Hearts** from California continue to yield strong volumes for early September. With continuous strong supply and quality, **Organic Celery** will remain promotable into mid-September.

- **Organic Green Beans** from Pennsylvania continue to yield strong volume and excellent quality.

- **Organic Color Bell Peppers** from Canada are limited, while Holland supplies are steady, and pricing has normalized as supply volume improved.

- **NOTE:** **Organic Asparagus** prices will continue to increase as we head into Labor Day with Mexico winding down, new fields not starting yet, and holiday pulls.



LOCAL LIST

SEPT 2 - SEPT 9, 2022



ORGANIC

Amos King - Lancaster, PA

- 41379 - OG Tomatoes Grape 12/1 pt
- 43805 - OG Watermelons Mini 35 lb 6 ct
- 41434 - OG Watermelons Mini 35lb 8ct

Central PA Produce Coop - Tyrone PA

- 41036 OG Squash Acorn Green 30 lb
- 41031 - OG Squash Butternut 35 lb
- 41035 - OG Squash Delicata 35 lb
- 41044 - OG Squash Kabocha 35 lb
- 41050 - OG Squash Spaghetti 30 lb

Clarion River - Sligo, PA

- 41036 OG Squash Acorn Green 30 lb
- 41031 - OG Squash Butternut 35 lb
- 41050 - OG Squash Spaghetti 30 lb

Deep Root - Johnson, VT

- 40487 - OG Beets Chiogga 25 lb
- 40496 - OG Beets Gold 25 lb
- 40491 - OG Burdock Root 10 lb
- 40724 - OG Parsley Flat Leaf PREM 30 ct (Italian)
- 40723 - OG Parsley Curly PREM 30 ct
- 41015 - OG Squash Green 20 lb
- 40297 - OG Squash Yellow 20 lb

Eagle Shadow Farm (Samuel Stoltzfus) - Millville, PA

- 40485 - OG Beets Red 25 lb

Eastern Fresh Growers - Cedarville NJ

- 41398 - OG Tomatoes Grape Gold 12/1 pt
- 41379 - OG Tomatoes Grape 12/1 pt

Flaim Farm - Vineland NJ

- 40485 - OG Beets Red 25 lb
- 40488 - OG Beets Red Bunched 12 ct
- 40532 - OG Beets Red Bunched PREM 24 ct
- 40510 - OG Bok Choy PREM 35 lb
- 40513 - OG Bok Choy Baby PREM 20 lb
- 40515 - OG Cabbage Napa 35 lb
- 40650 - OG Dandelion 12 ct
- 40671 - OG Greens Collard 12 ct
- 40672 - OG Greens Kale 12 ct
- 219525 - OG Herb Mint 12 ct
- 40912 - OG Leeks Bulk PREM 20 lb
- 40786 - OG Peppers Habanero 10 lb
- 40804 - OG Peppers Serrano 10 lb

Green Field Farms - Wooster, OH

- 41434 - OG Watermelons Mini 30 lb 8 ct

King Family Farm - New Holland, PA

- 41535 - OG Onions Sweet Jumbo 40 lb
- 41536 - OG Onions Sweet Jumbo MED 40 lb
- 41531 - OG Onions Red Jumbo 40 lb
- 41525 - OG Onions Red MD 40 lb
- 41330 - OG Tomatoes Beefsteak 10lb
- 42305 - OG Tomatoes Roma 20lb
- 41357 - OG Tomatoes Round 20 lb

Joesph Weaver - Ephrata, PA

- 40462 - OG Corn Bi-Color 48 ct

Lady Moon Farm - Chambersburg, PA

- 40639 - OG Eggplant PREM 24 lb Lady Moon
- 40796 - OG Peppers Green PREM 25 lb
- 40838 - OG Peppers Jalapeno 10 lb
- 231688 - OG Peppers Mini-Mix Sweet 18/10 oz Clam
- 41020 - OG Squash Green PREM 20 lb
- 41336 - OG Tomatoes Grape Premium 12/1 pt
- 41385 - OG Tomatoes Cherry Rainbow 12/1 pt
- 41346 - OG Tomatoes Cherry 12/1 pt Clamshell

Lancaster Farm Fresh - Lancaster, PA

- 40454 - OG Cabbage Red PREM 45 lb
- 40518 - OG Cabbage Savoy 35 lb
- 40650 - OG Dandelion 12 ct
- 40628 - OG Dandelion PREM 24 ct
- 40670 - OG Greens Collard 24 ct
- 40675 - OG Greens Kale 24 ct
- 40724 - OG Parsley Flat Leaf PREM 30 ct (Italian)
- 40859 - OG Peppers Cubanelle 10 lb
- 228711 - OG Peppers Mini-Mix Sweet 8/1 pt Clam
- 40789 - OG Peppers Red USA 11 lb

Pedersen Farms - Seneca Castle, NY

- 40548 - OG Cabbage Green PREM 45 lb
- 40454 - OG Cabbage Red PREM 45 lb
- 40462 - OG Corn Bi-Color 48 ct
- 40675 - OG Greens Kale 24 ct

Reed Family Farm - Elizabethtown, PA

- 40376 - OG Beans Green 25 lb





LOCAL LIST

SEPT 2 - SEPT 9, 2022



CONVENTIONAL



Benedict Farms - Chambersburg, PA

2255 - CV Squash Green MD Local 20 lb
2338 - CV Squash Yellow MD Local 20 lb

Cedar Meadows Farm - Lancaster County, PA

23156 - CV Tomatoes Heirloom PA 15 lb

Copenhaver Farm, Lebanon PA

480 - CV Beans Green 25lb

Eastern Fresh Growers - Cedarville NJ

1837 - CV Peppers Green JBO Local 22 lb
229433 - CV Peppers Green JBO/XL 22 lb
2255 - CV Squash Green MD Local 20 lb
23069 - CV Tomatoes Vine Ripe XL NJ 25 lb

Falling Spring Fruit Farm - Chambersburg, PA

1062 - CV Corn Bi-color 48ct

Fifer Orchards - Camden, DE

1062 - CV Corn Bi-color 48ct
1086 - CV Corn Bi-color 50 dz bin
1060 - CV Corn White 48 ct
1084 - CV Corn White 50 dz bin
228499 - CV Tomatoes Vine Ripe XL/JBO 25 lb

Flaim Farm - Vineland NJ

205 - CV Arugula 24ct
550 - CV Beets Red Bunched 12 ct
591 - CV Bok Choy 30 lb
592 - CV Bok Choy Baby Shanghai 30 lb
750 - CV Cabbage Green 50 lb
1670 - CV Cabbage Napa 30 lb
795 - CV Cabbage Savoy 30 lb
780 - CV Cabbage Red 50 lb
1308 - CV Greens Collard NJ 18 ct
1285 - CV Eggplant Italian NJ 10 lb
1275 - CV Eggplant Graffiti NJ 12 lb
1273 - CV Eggplant Sicilian NJ 20 lb
1315 - CV Greens Kale NJ 18 ct
455 - CV Herb Basil 15 ct

1510 - CV Herb Mint 12 ct Box

1967 - CV Peppers Jalapeno 35 lb

2255 - CV Squash Green MD Local 20 lb

2334 - CV Squash Zucchini Gold Bar 20 lb

2338 - CV Squash Yellow MD Local 20 lb

Hollabaugh Bros - Biglerville, PA

**Special wood crate program available by request*

**232425 - CV Apples Honeycrisp PA 25 lb Crate*

**225688 - CV Peaches 2.5" 25 lb Crate*

**228453 - CV Peaches White 2.5" 25 lb Crate*

Hess Bros - Lancaster, PA

5030 - CV Apples Gala 2.5" East 12/3 lb Bag
5475 - CV Apples Gala East 40 lb 72/88 ct
5471 - CV Apples Gala East 40 lb 100 ct
5123 - CV Apples Gala East 8/5 lb Bag
5168 - CV Apples Gala East 38 lb 8 ct Tote Bag
5294 - CV Apples Ginger Gold East 40 lb 72/88 ct
5175 - CV Apples Ginger Gold East 40 lb 8 ct Tote Bag
5017 - CV Apples Ginger Gold East 12/3 lb Bag
5476 - CV Apples Honeycrisp East 40 lb 72/88 ct

Hess Farm - Ephrata, PA

480 - CV Beans Green 25 lb
2819 - CV Cucumbers Super 72ct
2845 - CV Cucumbers Kirby 40lb
1837 - CV Peppers Green JBO 22 lb
229433 - CV Peppers Green JBO/XL 22 lb
1967 - CV Peppers Jalapeno 35 lb
2255 - CV Squash Green MD 20 lb
2338 - CV Squash Yellow MD 20 lb

Jersey Fruit - Hammonton, NJ

15672 - CV Peaches 2 3/4" East 25 lb
15684 - CV Peaches 3" NJ 25 lb
15685 - CV Peaches White 2 3/4" East 25 lb

Joshua Weaver - Ephrata PA

780 - CV Cabbage Red 50lb
1084 - CV Corn White Local 50 dz Bin

Lester Weaver - Lancaster, PA

1086 - CV Corn Bi-color 50 dz bin

Nardelli Lake View Farms, Cedarville NJ

1670 - CV Cabbage Napa 30 lb
795 - CV Cabbage Savoy 30 lb
1062 - CV Corn Bi-color 48ct
1099 - CV Corn Bi-color 12/4 ct tray
1060 - CV Corn White 48ct
2819 - CV Cucumbers Super 72ct
2845 - CV Cucumbers Kirby 40lb
1345 - CV Greens Mustard 12 ct
1350 - CV Greens Turnip 12 ct
2255 - CV Squash Green MD 20 lb

Sam Zook - Lancaster, PA

23305 - CV Tomatoes Grape PA 12/1 pt

Six L's/Lipman - WEST DEPTFORD, NJ

1837 - CV Peppers Green JBO 22 lb
229433 - CV Peppers Green JBO/XL 22 lb
2255 - CV Squash Green MD Local 20 lb
2338 - CV Squash Yellow MD Local 20 lb

Stauffer Huling Farms - Lancaster, PA

4106 - CV Onions Sweet JBO PA 40 lb
4628 - CV Onions Sweet PA 14/3 lb

Vincent Farm - Delmar, DE

1062 - CV Corn Bi-color 48ct
1086 - CV Corn Bi-color 50 dz bin
1060 - CV Corn White 48 ct
1084 - CV Corn White 50 dz bin
11991 - CV Watermelons 60 ct 11# Avg Bin
11997 - CV Watermelons 45 ct 15# Avg Bin

****PUMPKINS & ORNAMENTALS ARE
AVAILABLE FROM PA GROWERS!**

TALK TO YOUR REP FOR INFO.

CONVENTIONAL MARKET NEWS

SEPTEMBER 2 - SEPTEMBER 9, 2022

PROMOTABLE HASS AVOCADOS

September should be a fantastic time to promote **Hass Avocados** at favorable price points!

Peruvian growers have shipped a lot of volume from their high oil content late season fruit from east coast ports. Meanwhile, Mexico volumes have been fairly strong too.

Hass Avocados will be promotable on price from Peru and Mexico. The best spot value buys will be on Peruvian fruit - 32ct, 48ct, and 60ct.



CV APPLES

Get ready for local tote bag **Apple** season!

Eastern **McIntosh Apples** are now in season, peaking on 100sz and smaller.

Eastern **Ginger Gold, Gala, and Honeycrisp Apples** are all in season now and available in multiple sizes and bags.

Ask about spot buys on PA **Honeycrisp Apples** in wood field crates.

New crop Eastern **Red Delicious Apples** are expected to start in mid-September, followed by **Sweetango, Cortland, Empire, Gold Delicious, and Rome Apples** later in September.

Stemilt's early Honeycrisp cross, **Rave Apples**, are now in peak season in bulk and in 4 packs.



CV BERRIES

Blackberry prices remain steady. Fruit continues to come in from California as Mexico still isn't quite ready to harvest yet. Quality has been good.

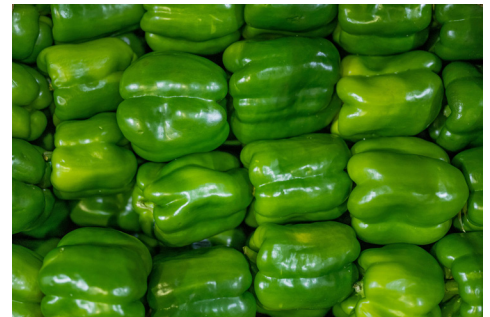
Blueberry prices remain fairly high on the Peruvian imports. Volume is getting delayed at the ports and demand remains strong across the country. Argentinean fruit is starting to be available, but we plan to stay with Peruvian as quality has been outstanding.

Raspberry prices will begin coming down as demand eases off and more volume is beginning.

Strawberry prices are coming down as demand has softened. Pricing remains on the higher side, but not as high as recent weeks. Supply is tight but demand has softened. Quality has been good as we finish up the Salinas, CA growing region. New crops in Oxnard/Santa Maria are still a few weeks away.

SPECIALTY BERRIES COMING MID-SEPT:

Driscoll's **Sweetest Batch Blackberries**, Driscoll's **Rose** and **Sweetest Batch Strawberries**, Fruitist **Jumbo Blueberries**.



CV PEPPERS

Green Peppers will be promotable as we head into mid-September. There is a lot of quality jumbo Peppers out there and shippers are looking to deal. We will continue to source product from NJ, DE, PA. Quality has been excellent!

Local **Chili Peppers** have been arriving out of NJ and PA. Pricing is expected to stay steady. Quality and availability are excellent.

11lb **Hothouse Pepper** prices have dipped for the **Yellow** and **Orange** as Canada is flushing, and Mexico is coming into the market. **Red Peppers** are in higher demand due to issues with the west coast field crop.

15lb **Elongated Sweet Red Pepper** prices will remain on the high side due to ongoing issues with heat and water availability.

Mini Mix Sweet Pepper prices will continue to ease down as we head into the middle of September with new fields starting and Canada greenhouses coming into their new crop as well. Quality has been excellent.



CV MELONS

Cantaloupes remain promotable from California!

California **Honeydew** continues with peak season quality but will be lighter in volume due to limited plantings for the rest of the late summer season.

There will be spot buy offerings for early September on “**Sugar Kiss**,” “**Summer Kiss**,” and “**Dino**” **Melons**. Otherwise, the varietal melon season is winding down for California growers.



CV RUSSET POTATOES

New crop **Russet Potatoes** are starting to bring relief to a high-priced category.

Green Giant 10/5lb **Russet Potatoes** are available with product packed from Wisconsin. Pricing is expected to come off in September, and we'll be shifting to the “blue bag” **Idaho Russet Potato** for arrivals starting later in the month.

The market on new crop 10/5lb Idaho **Russet Potatoes** are started to come off a bit this week and more shippers bring new crop to market. Sizing is peaking on the smaller side, which has brought bagged pricing down a bit.

NOTE: Larger **Count Russet Potatoes** from Idaho remain tight with high prices. This is expected to continue for at least the next couple of weeks in September.



CV WATERMELONS

Watermelon prices are holding steady and quality has been nice.

Local growers are finishing up for the season as most plan to end harvests right before Labor Day. There still will be bins available for another few weeks, though we expect to see demand shift more to cartons as temps cool and whole **Watermelon** sales decline.

We will stay in Delaware/North Carolina crops for another month until we transition back down to Florida with cartons sometime in October.



CV GRAPES

Red Seedless Grapes are in excellent quality as we transition into better varieties for September sales like “**Sweet Celebration**,” “**Scarlett Royal**,” and “**Jack Salutes**.”

Green Seedless Grapes continue with peak season supply and quality. Varieties for September will include “**Great Greens/Estimates**,” “**Sweet Globes/Green Emerald**,” “**Stella Bella**,” and “**Autumn Kings**.”

Cotton Candy Grapes will remain in season for much of September.



CV MANGOS

Mangos are available from Mexico and Brazil. Tommy Atkins fruit is just starting out of Brazil, while Mexico has end of season Kent and Keitt varieties available.

Aduffo Honey Mangos will wrap up very soon from Mexico.



CV ONIONS

The **PA Simply Sweet Onion** season is starting to wind down in early September. We will have a smooth transition over to Peruvian **Sweet Onions** in the “**Mayan Sweet**” bags during mid to late September.

Pricing on **Red, Yellow, and White Onions** has increased across the board as supply has really dried up out of California and other western growing regions. This market will remain tight until new crop growing regions are ready in late September.



CV FIGS

Black Mission Figs will be steady for the month of September. **Green Sierra Figs** are done for the season.



CV BROCCOLI

Maine **Broccoli Crowns** are readily available with great quality. California remains limited, so that has pushed pricing up a little bit overall.



CV EGGPLANT

Eggplant prices will remain steady as we are seeing promotable pricing with local product out of NJ and PA. Quality has been excellent, and there is plenty of volume through September.



CV LETTUCE

NOTE: Iceberg Lettuce availability has gotten better in CA and Quebec to kick off September. The high prices are starting to soften.

ALERT! Romaine and Romaine Hearts remain tight, and prices continue to bump up.



CV SQUASH

Green Squash from PA, NJ, and DE will continue to arrive with outstanding quality. Prices will come down as new fields are increasing in production for early September.

Yellow Squash should start to decrease with production because of new fields as well, but there is also less around than **Green Squash**. Product is available out of NJ, DE, and PA.



CV SWEET CORN

Sweet Corn prices are continuing to increase as we head towards Labor Day out of DE, NJ, NY, and PA. Quality has been excellent.

There may be a gap in product around Labor Day as product has been ahead of schedule with the warm weather we have had, and the plantings may miss the mark.



CV STONE FRUIT

High elevation Washington **Dark Sweet Cherries** will sell through the last arrivals to the east coast by 9/10.

White and **Yellow Nectarines** out of California are expected to be in season through mid-September. **Yellow Peaches** could go a bit longer.

Eastern **Peaches** and **Nectarines** are expected to wind down during the first week of September.

Eastern Italian **Prune Plums** will be in season for early September.

A couple fall varieties of **Pluots** will be available during early to mid-September.



CV TOMATOES

Vine Ripe Tomato quality has been outstanding from DE, NJ, and PA. With the heat really bringing on production now, it could cause increased pricing and a gap in product as we approach mid-September.

Grape Tomatoes continue in season out of Lancaster County, PA. Quality has been outstanding.

Roma Tomatoes are very promotable as we head into mid-September out of PA and Mexico.

Greenhouse growers continue to offer spot buys on some of their varietal **Snacking Tomatoes** during early September.



CV CITRUS

Navel Oranges continue to remain excellent on imports. Smaller fruit remains in abundance while larger fruit remains tight and hard to come by for the month of September. We are pulling from South Africa and Chile mainly as quality remains outstanding!

Import **Mandarins** are in great supply with outstanding quality. We will see very promotable pricing through September with great quality. We are in "Tangos" and "W Murcotts" pulling mainly out of Uruguay, South Africa, and Chile. Peru is winding down.

The California/Arizona **Grapefruit** crop has transitioned into "Summer Rubies." Expect lighter internal color than the "Star Rubies." Quality is outstanding on the 27sz, 40sz and 8/5lb. Expect this crop to roll through September. Florida growers are expecting to have a very nice crop this year.

Look for **Juice Oranges** from Florida to start around early October.

Lemons remain in decent supply. There is more Choice fruit vs. Fancy fruit available. We remain in California but have Fancy import options in-house (115's) at a value with strong quality.

Limes will continue to increase in price and decrease in quality out of Mexico while yields slowly decrease due to drought conditions.

OTHER STORIES

- **Pomegranates** are in season from California. The "Granada" variety arrived in good condition. Pricing will be high to start but should drop considerably as the weeks progress.

- **Asparagus** markets are expected to remain steady with a slight increase towards Labor Day. Weather is causing the slow production of the new crops in Mexico which would typically cause the flush and drop in the market price as we head into September. Labor Day holiday pulls may keep the prices flat until after the holiday. Quality has been good.

- **NOTE:** Cauliflower prices are increasing in all growing regions, but the local fall crop is not too far behind.

- **Green Bean** prices are expected to increase slightly as we head into mid-September out of NJ and PA. Quality and availability have been excellent.

- **NOTE:** Euro and Mini Seedless Cucumber prices are on the rise until new crop greenhouse production ramps up later in September.

PUMPKINS & FALL ORNAMENTALS

STARTING SEPTEMBER 2022

MINI DECORATIVES/ORNAMENTALS



Code: 4822

JACK-BE-LITTLE (MINI-PUMPKINS)

40 ct case

PLU: 4734



Code: 4929

JACK-BE-LITTLES BAGGED

14/5 ct case

UPC: 743425-08950



Code: 214521

WHITE JACK-BE-LITTLES (BABY BOO)

40 ct case

PLU: 4734



Code: 4901

INDIAN CORN

16/3 ct case

UPC: 033383-40077



Code: 214039

MINI INDIAN CORN

Display box 16/3 ct case

UPC: 743425-40076



Code: 4944

PUMPKIN LITTLES

(Hardball size Pumpkin)

20 ct case

PLU: Retailer-Assigned



Code: 4913

TIGER STRIPE/POKEMON PUMPKINS

20 ct case

PLU: Retailer-Assigned



Code: 232524

GOURDS BAGGED

12/6 ct case

UPC: 7-46309-12347-6



Code: 4930

GOURDS

40 ct case

PLU: 3135

MINI DECORATIVES/ORNAMENTALS



Code: 4950
BABY PAM (PIE)
12 ct case
PLU: 3134



Code: 4945
CORN STALKS
1 bunch
PLU: Retailer-Assigned



Code: 4935
REGULAR SIZE STRAW BALES
1 ct
PLU: Retailer-Assigned



Code: 222242
MINI CELLO STRAW BALES
50 ct
21879-20080
Pre-Order Survey Only



Code: 222243
SMALL SINGLE STRAW BALE
24 ct
Pre-Order Survey Only



Code: 229043
CORN STALK HORSE
Available by request



*For more information on
pre-ordered painted pumpkins &
kits, contact your sales rep!*



PUMPKIN BINS



CARVING/JACK-O-LANTERN/FACE PUMPKIN BIN

PLU:3130

4984 - CV Pumpkins Face 40 ct bin
4982 - CV Pumpkins Face 50 ct bin

4981 - CV Pumpkins Face 30 ct bin
4987 - CV Pumpkins Face 60 ct bin



PRIZE WINNER PUMPKINS

4994 - CV Pumpkin Prize Winner 100-170 lb

Available by request



FIELD TRIP/MYSTIC PUMPKINS W/ LONG STEM BIN

(For painting or decorating)

7390 - CV Pumpkins Field Trip 140 ct bin

Available by request



PIE (BABY PAM) PUMPKINS BIN

(For baking or decorating)

4951 - CV Pumpkins Baby Pam (Pie) 150 ct bin - PLU: 3134

Available by request

MIXED VARIETY PUMPKIN BINS



Code: 4968

"AUTUMN MIX" PUMPKIN BIN 35 CT

(Blue Jarrahdale, Pink Porcelain, Peanut)

Varietal mix is subject to change due to availability



Code: 4980

"FALL FANTASY" PUMPKIN BIN 35 CT

(Fairytale, White Flat, Cinderella)



PHONE: 1.800.422.8384

| www.fsproduce.com



PUMPKIN VARIETAL BINS - AVAILABLE BY REQUEST



WHITE PUMPKIN BIN



BLUE JARRAHDALE PUMPKIN BIN



PEANUT PUMPKIN BIN



ONE TOO MANY PUMPKIN BIN



**WARTY GOBLIN /
KNUCKLEHEAD PUMPKIN BIN**



LONG NECK GREEN SQUASH BIN
(Goose Gourds)



PUMPKIN VARIETAL BINS - AVAILABLE BY REQUEST



NECK PUMPKIN BIN



RED WARTY THING BIN



CINDERELLA PUMPKIN BIN



FAIRYTALE PUMPKIN BIN



PINK PORCELAIN PUMPKIN BIN



WHITE FLAT PUMPKIN BIN

