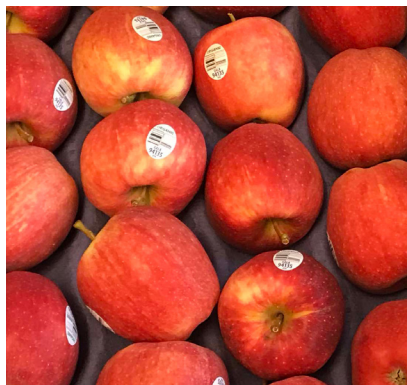


MARKET NEWS ORGANIC OUTLOOK

ORGANIC HONEYCRISP ARE BACK IN SEASON



Even though summer fruit is still in season, the consumer mindset quickly shifts to apples and fall immediately after Labor Day. Do you have your fruit resets planned?

The first fresh crop **Organic Honeycrisp Apples** of the season have arrived! Quality, color, and flavor are great! We expect an excellent season out of Washington with peak promotions during mid-September through October. This first fruit is trading at higher pricing, but will ease down as volumes ramp up in mid-September.

The first **Organic Sweetango Apples** will arrive right after Labor Day, and be in season into much of October. This is a fantastic variety (very sweet, with Honeycrisp parentage) for flavor and texture. For more info: sweetango.com

Fresh **Organic Gala Apples** from Washington are now in season! 80/88s, 100s, and 12/3lb bags will be very promotable for September through November.



Organic Braeburn - arriving October, some imports left for early September.

Organic Fuji Apples - arriving late September, imports available until then.

Organic Gold Delicious - arriving 9/4

Organic Granny Smith - arriving 9/15, imports available until then at high prices.

Organic Pink Lady/ Cripps Pink - arriving in November, it looks like there will be enough import fruit until then.

Organic Red Delicious - arriving in early October, some imports left for early September.



OG SPECIALTY

Organic Magenta Dragon Fruit will be available next week in limited supplies. This red-fleshed variety is beautiful! **Organic Dragon Fruit** will be in stock throughout the fall season from California.

Organic Horned Kiwano Melons are back next week. Expect steady supplies through the fall months.

Organic Black Mission Figs are in peak season right now and pricing is promotable! Be sure to take advantage.

Organic Aloe Vera Leaves, Curry Leaves, Mamey, Starfruit, Sapodilla, Cactus Leaves (Nopales), and Green Skin Avocados will all be available for early September from South Florida (pending any hurricane damage).

Fresh whole-pod **Organic Edamame** is in season from Pedersen Farms in New York.



OG GRAPES

California **Organic Black, Green, and Red Grapes** are now in excellent supply and ready for late summer/early fall promotions. Very nice quality should be expected.

We'll be offering premium variety fruit in the Air Chief Organics brand. This week the Blacks are "Summer Royal," Greens are "Autumn Crisp and Timpson," and Reds are "Krissey" and "Scarlett Royal" varieties.

For stores eager to have an alternative to plastic, we'll be testing out some small volume on 10/2lb paper totes of all three colors of **Organic Grapes** from Benzler/Rainbow Valley in early September.

California **Organic Concord Grapes** continue in good, steady supply.



OG PEARS

Washington **Organic Starkrimson (Red) Pears** are now in excellent supply.

Washington **Organic Bartlett Pears** are now available in 44lb. boxes.

The first California **Organic Bosc Pears** are available, and excellent quality should be expected for September as the crop transitions later to Washington grown fruit.

New crop California **Organic Asian Pears** have arrived and are now in good supply. The varieties are brown-skin with very sweet, juicy flesh for September.



OG WATERMELONS

Organic Mini Seedless Watermelons will be very promotable this week but in smaller sizes. The 11 ct are a small size, but the quality on these are exceptional out of New Mexico. The melons are very heavy and flavor is outstanding with great color and sugar.

Organic Seedless Watermelons will be available in cartons this week. Harvests out West are finishing up for the season, leading to less volume as the summer is slowly coming to an end. Quality, however, coming in from New Mexico is excellent as the short desert season is finishing up as well.



OG LETTUCE

Organic Leaf Lettuces from Quebec have seen tightening of supplies. Expect to see product from California to supplement the lack of supplies in Canada. Prepare to see pricing from California elevated compared to the Canadian product. The second week of September will see supplies from Canada begin to ramp up.

Quality and availability will remain steady during the early weeks of September.



OG ROMAINE HEARTS

Organic Romaine Hearts from California continue to produce promotable volumes as September begins. After seeing prices spike for a month due to supplies tightening and sub-par quality, California is producing a promotable quantity of **Organic Romaine Hearts**. Expect to see continued superb quality and aggressive pricing in early September.



OG LOCAL EGGPLANT & PEPPERS

Organic Eggplant & Organic Green Peppers from Lady Moon Farms (Pennsylvania) & Hepworth Farms (New York) both continue to see excellent supplies as September begins. Expect to see promo pricing and steady availability on these local items for early September.

With quality remaining exceptional, as well as promotable volumes and pricing, this is the perfect season to incorporate these items into a local display to generate additional sale volume.



OG MANGOS

Mexican **Organic Mango** prices are rising as fruit supplies tighten up here at the end of the season. Look for bigger sizes to be plentiful. 12ct sized fruit will NOT be available next week.

8ct and 9ct **Organic Non-Hot Water Treated (NHWT) Mangos** are in stock! These mangos are from Mexico's "Fruit Fly Free Zone" and they are not required to be given a hot water bath, which enables them to stay on the tree longer for maximum flavor and juiciness! These will be available in Kent and Keitt varieties for the next few weeks.



OG SWEET CORN

Organic Bi-Color Sweet Corn from Pennsylvania has come to an end. The New York season is still going but expect supplies to be lighter as we begin September and continue into mid-September. Quality is expected to remain stellar even with the lighter supplies.



OG CELERY

Organic Celery grown in California is beginning to see tighter supplies as September begins. Due to quality issues and limited yields, expect to see pricing on **Organic Celery** to rise in early to mid-September.

Many growers in California are experiencing different growing issues due to diseases, causing the celery to be un-shippable or being used to create celery hearts. The high prices, quality issues, and limited volume is expected last a few weeks before it begins to normalize again.



OG HARD SQUASH

Local **Organic Hard Squashes** are now in season!

For early September we will be offering **Organic Green Acorn, Butternut, Delicata, Kabocha, and Spaghetti Squash** from Pennsylvania farms.

Organic Pie Pumpkins are also coming into season for early September.

We're also marketing some trial plantings of **Organic Honeynut Squash** grown in Ephrata, PA behind the Four Seasons Produce warehouse.



OG SQUASH

Organic Green Squash and Yellow Squash from Lady Moon continue to harvest in Pennsylvania & Georgia. Pricing will remain steady and promotion opportunities will be available in early September. Expect to also see product from New York to be available as well for a local option at store level.



OG CAULIFLOWER & BROCCOLI

Organic Cauliflower is in season from California and Quebec. As we head into mid-September, pricing is expected to start to rise as demand picks up.

Organic Broccoli and **Broccoli Crowns** from both growing regions of California and Quebec had been seeing robust crop yields. Headed into early September, pricing may perk up as those harvest flushes end and production returns to more moderate levels.



OG STONE FRUIT

California **Organic Pluots** are now in good, steady supply with multiple varieties available.

California **Organic Black** and **Red Plums** are in and out between varieties, as well as flip flopping between 2 layer and volume-filled, based on what is getting packed.

Organic Yellow Nectarines and **Peaches** continue in steady supply out of Washington and are expected to continue through September.

Organic White Nectarines have popped back up with a very limited supply due in the first week of September. **Organic White Peaches** are in limited supply.



OG GREEN BEANS

Local **Organic Green Beans** from Reed Family Farm, located in Elizabethtown, PA, continue to see steady supplies. Expect to see continuing stable supplies and pricing, while quality will remain first-rate as September begins.

These **Organic Green Beans** give stores an excellent opportunity to promote a locally grown product and support our local farmers.



OG BERRIES

NOTE: Driscoll's **Organic Blueberries** have transitioned to 6oz, and supplies are very tight, prices have increased sharply, and will continue to rise with heavy prorates expected. Conditions are not expected to improve for a couple of months until Mexico ramps up. Other brands of **Organic Blueberries** out of the Pacific Northwest have followed suit and have transitioned to 6oz more expensive fruit. Fruit will begin out of Argentina, and then Chile, in September.

Driscoll's **Organic Blackberries** out of California are in firm but steady supply. Other brands are gapping until the new crop starts in the fall.

Organic Raspberries out of California and Mexico are in steady supply.

ALERT! **Organic Strawberries** continue in extremely firm supply with prices on the rise. Expect prorates.



OG CUCUMBERS

ALERT! **Organic Cucumbers** are extremely limited as September begins. With supplies from local growers and Mexico limited, expect pricing to continue to rise in early to mid-September and availability to become limited during this time.

Organic Mini Cucumbers and **Euro Seedless Cucumbers** supplies tightened at the end of August and is expected to continue into September. Pricing will remain elevated and quality will be less than ideal.



OG TOMATOES

Organic Grape Tomato prices continue to be promotable from Lady Moon Farms in Chambersburg, PA. Quality has been excellent.

Organic Round Tomato markets will be promotable again this week from Lady Moon Farms in PA. There continues to be flush harvest and quality has been exceptional all season.

PA-grown **Organic Heirloom Tomatoes** will begin to slow harvests this week as the season is slowly coming to an end. Quality continues to be excellent.

OTHER STORIES

• **ALERT!** **Organic Lemons** out of California and Mexico remain extremely limited with skyrocketing prices continuing. Mostly choice fruit is available, and conditions are expected to last until the end of September.

• **Organic Asparagus** prices are coming down this week. Quality has been excellent out of Mexico and supplies are steady.

• **ALERT!** **Organic Bok Choy** and **Baby Bok Choy** continue to be extremely limited in early September. Expect to see limited available throughout mid-September. When available expect quality to be less

than ideal as only a limited number of farmers grow **Bok Choy/Baby Bok Choy** and have experienced heavy insect damage over the last few weeks.

• **Organic Pineapple** supplies will be steady in the beginning of September. Both 6ct and 8ct options will be available.

• **Organic Hass Avocados** from Mexico are in steady supply. Transition will begin soon from the Flora Loca crop in Mexico to the Aventajada crop. Supply should not be affected too much in the transition. **Organic Fair-trade Hass Avocados** will be available next week from Equal Exchange. 60ct fruit will be limited.

• Locally grown **Organic Red** and **Candy Sweet Onions** continue to be in very promotable supply this week. Quality is outstanding! Nevada **Organic Onions** are getting started in a limited way this week and will be in full production starting with the first week of September shipping. The Organic Onion market overall continued to be soft and supply is seasonably good with product coming out of multiple growing regions.

• **ALERT!** **Organic Grapefruit** will be in a seasonal gap for about a month until the new growing regions are in season from California. Expect no **Organic Grapefruit** to be available until late September or early October.



AVAILABILITY FOR THE WEEK OF AUGUST 30 - SEPTEMBER 6, 2019

ORGANIC

NEW JERSEY

EASTERN FRESH - CEDARVILLE, NJ

41398 OG Tomatoes Grape Gold 12/1 pt

NEW YORK

HEPWORTH FARMS - MILTON, NY

40518 OG Cabbage Savoy 35 lb
40666 OG Chard Green PREM 24 ct
40680 OG Chard Rainbow PREM 24 ct
40667 OG Chard Red PREM 24 ct
41088 OG Cucumbers PREM 20 lb
40639 OG Eggplant PREM 24 lb
40640 OG Herb Cilantro 30 ct
41158 OG Lettuce Red Leaf PREM 24 ct
41182 OG Lettuce Romaine PREM 24 ct
40796 OG Peppers Green PREM 25 lb
40886 OG Radishes French Breakfast 24 ct
40900 OG Spinach Bunched 24 ct

PEDERSEN FARMS - SENECA CASTLE, NY

40548 OG Cabbage Green PREM 45 lb
40454 OG Cabbage Red PREM 45 lb
40462 OG Corn Bi-Color 48 ct
213349 OG Beans Edamame In Shell 10/1 lb
40811 OG Greens Kale PREM 24 ct
40723 OG Parsley Curly PREM 30 ct
40724 OG Parsley Flat Leaf PREM 30 ct (Italian)

PRISTINE ACRES - LAURENS, NY

44346 OG Watermelons Sugar Baby 60+ lb 4 ct
44438 OG Watermelons Sugar Baby 60+ lb 6 ct
44437 OG Watermelons Sugar Baby 60+ lb 5 ct
43805 OG Watermelons Mini 35 lb 6 ct
41434 OG Watermelons Mini 30 lb 8 ct

PENNSYLVANIA

CENTRAL PA PRODUCE COOP - TYRONE, PA

40838 OG Peppers Jalapeno 10 lb
41036 OG Squash Acorn Green 30 lb
41031 OG Squash Butternut 35 lb
41035 OG Squash Delicata 35 lb
41044 OG Squash Kabocha 35 lb
41220 OG Squash Pie Pumpkin 35 lb
41050 OG Squash Spaghetti 30 lb

CLARION RIVER ORGANICS - SLIGO, PA

40462 OG Corn Bi-Color 48 ct
40784 OG Peppers Anaheim 10 lb
40859 OG Peppers Cubanelle 10 lb
41255 OG Peppers Poblano 10 lb
41031 OG Squash Butternut 35 lb
41044 OG Squash Kabocha 35 lb

CHRIST KING - LANCASTER, PA

40796 OG Peppers Green PREM 25 lb
40789 OG Peppers Red 11 lb
42305 OG Tomatoes Roma 20 lb
41531 OG Onions Red JBO 40 lb
41525 OG Onions Red MD 50 lb
41536 OG Onions Sweet MD PA 40 lb
41535 OG Onions Sweet JBO PA 40 lb

JOSEPH WEAVER - LANCASTER, PA

40462 OG Corn Bi-Color 48 ct

LADY MOON FARMS - CHAMBERSBURG, PA

40639 OG Eggplant PREM 24 lb
40796 OG Peppers Green PREM 25 lb

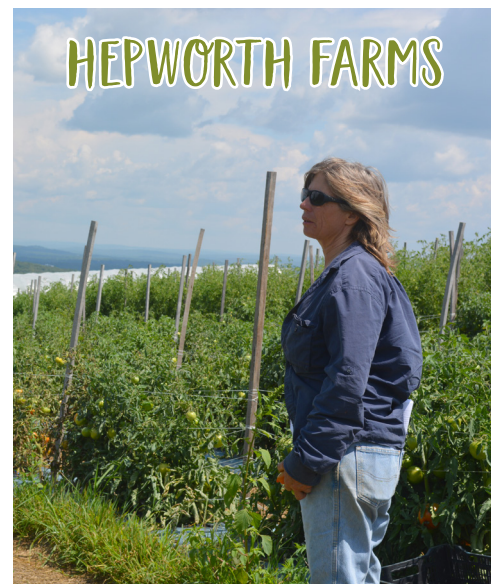
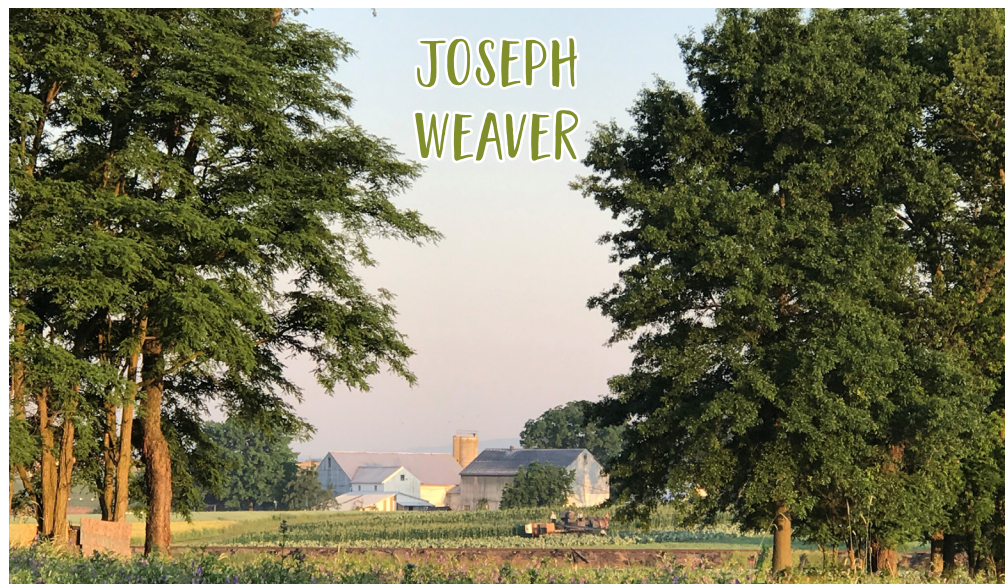
40838 OG Peppers Jalapeño 10 lb
41020 OG Squash Green PREM 20 lb
40297 OG Squash Yellow 20 lb
41346 OG Tomatoes Cherry 12/1 pt Clamshell
41385 OG Tomatoes Cherry Rainbow 12/1 pt
41336 OG Tomatoes Grape Premium 12/1 pt
41358 OG Tomatoes Heirloom 10 lb
41351 OG Tomatoes Roma 20 lb
41359 OG Tomatoes Round 2-Layer 20 lb

REED FAMILY FARM - ELIZABETHTOWN, PA

40376 OG Beans Green 25 lb

SAMUEL STOLTZFUS - MILLVILLE, PA

40485 OG Beets Red 25 lb
41531 OG Onions Red JBO 40 lb
41525 OG Onions Red MD 50 lb





AVAILABILITY FOR THE WEEK OF AUGUST 30 - SEPTEMBER 6, 2019

CONVENTIONAL CONTINUED...

DELAWARE

FIFER ORCHARDS - DOVER, DE

- 1060 CV Corn White 48 ct
- 1320 CV Greens Kale 18 ct 18 lb
- 23036 CV Tomatoes Vine Ripe JBO 25 lb

VINCENT FARMS - LAUREL, DE

- 1060 CV Corn White 48 ct
- 11997 CV Watermelons 45 ct 15# Avg Bin
- 11991 CV Watermelons 60 ct 11# Avg Bin

NEW JERSEY

FLAIM FARMS - VINELAND, NJ

- 205 CV Arugula 24 ct
- 530 CV Beets Red 25 lb
- 550 CV Beets Red Bunched 12 ct
- 592 CV Bok Choy Baby Shanghai 30 lb
- 1362 CV Chard Green 12 ct
- 1355 CV Chard Rainbow 12 ct
- 1368 CV Chard Red 12 ct
- 1170 CV Dandelion Bunch NJ 12 ct
- 1275 CV Eggplant Graffiti NJ 12 lb
- 1262 CV Eggplant Italian 11 lb
- 1260 CV Eggplant PREM 24 lb
- 1273 CV Eggplant Sicilian NJ 20 lb
- 1308 CV Greens Collard NJ 18 lb
- 1315 CV Greens Kale NJ 18 lb
- 217581 CV Greens Kale Lacinato 12 ct
- 455 CV Herb Basil 15 ct
- 1200 CV Herb Dill NJ 24 ct
- 1510 CV Herb Mint NJ 12 ct Box
- 1475 CV Leeks Bunched 12 ct
- 1704 CV Parsley Curly 30 ct
- 1960 CV Peppers Anaheim 10 lb
- 1990 CV Peppers Banana 10 lb
- 1975 CV Peppers Cubanelle 18 lb
- 1839 CV Peppers Green XL NJ 22 lb
- 1993 CV Peppers Habanero Orange 8 lb
- 1807 CV Peppers Habanero Red 8 lb
- 1967 CV Peppers Jalapeno 35 lb
- 1980 CV Peppers Long Hot 16 lb
- 1995 CV Peppers Poblano 20 lb
- 1935 CV Peppers Red Choice 25 lb
- 1985 CV Peppers Serrano 8 lb
- 1827 CV Peppers Shishito 10 lb
- 1800 CV Peppers Suntan 22 lb
- 2255 CV Squash Green MED NJ 20 lb
- 23276 CV Tomatoes Grape 12/1 pt

JERSEY FRESH POTATOES - WOODBURY, NJ

- 4404 CV Potatoes White NJ 10/5lb Bag

JERSEY FRUIT - HAMMONTON, NJ

- 15679 CV Peaches 2 3/4" NJ 25 lb
- 15685 CV Peaches White 2 3/4" East 25 lb



NEW YORK

GOTHAM GREENS - BROOKLYN, NY

- 217351 CV Herb Basil Hydroponic 12/1.25 oz
- 217350 CV Lettuce Butterhead Baby 12/4.5 oz

TORREY FARMS - ELBA, NY

- 480 CV Beans Green 25 lb
- 750 CV Cabbage Green 50 lb
- 780 CV Cabbage Red 50 lb
- 2812 CV Cucumbers Select 72 ct
- 2806 CV Cucumbers Super 72 ct
- 2240 CV Squash Green MED 20 lb
- 2326 CV Squash Yellow MED 20 lb

PENNSYLVANIA

BENEDICT FARMS - CHAMBERSBURG, PA

- 2803 CV Cucumbers Super PA 72 ct
- 1260 CV Eggplant PREM 24 lb
- 1825 CV Peppers Green XL PA 22 lb
- 2258 CV Squash Green MED PA 20 lb
- 2320 CV Squash Yellow MED PA 20 lb

CEDAR MEADOWS - LANCASTER, PA

- 23206 CV Tomatoes Cherry Rainbow 15/1 pt
- 23156 CV Tomatoes PA Heirloom 15 lb

CHRIST L ESH - HOLTWOOD, PA

- 1075 CV Corn Bi-Color PA 50 dz Bin

COPENHAVER - LEBANON, PA

- 482 CV Beans Green PA 25 lb

HESS BROTHERS - PA/VA

- 5030 CV Apples Gala 2.5" East 12/3 lb Bag
- 5475 CV Apples Gala East 40 lb 88 ct
- 5471 CV Apples Gala East 40 lb 100 ct
- 5168 CV Apples Gala East 38 lb 8 ct Tote Bag
- 5294 CV Apples Ginger Gold East 40 lb 72/88 ct
- 5175 CV Apples Ginger Gold 40 lb 8 ct Tote Bag
- 5017 CV Apples Ginger Gold East 12/3 lb Bag
- 5019 CV Apples Honeycrisp 2.5" 12/3lb Bag



- 5476 CV Apples Honeycrisp 40 lb 80/88 ct
- 5672 CV Apples McIntosh East 40 lb 72/88 ct
- 5167 CV Apples McIntosh 40 lb 8 ct Tote Bag
- 5040 CV Apples McIntosh East 12/3 lb Bag
- 5007 CV Apples Paula Red 2.5" 12/3 lb Bag
- 5225 CV Apples Paula Red 40 lb 80/88 ct

HESS FARMS - WAYNESBORO, PA

- 2812 CV Cucumbers Select 72 ct
- 2803 CV Cucumbers Super PA 72 ct
- 1260 CV Eggplant PREM 24 lb
- 1975 CV Peppers Cubanelle 18 lb
- 1825 CV Peppers Green XL PA 22 lb
- 2258 CV Squash Green MED PA 20 lb
- 2320 CV Squash Yellow MED PA 20 lb
- 23070 CV Tomatoes Vine Ripe XL PA 25 lb
- 23036 CV Tomatoes Vine Ripe JBO 25 lb

JOSH WEAVER - LANCASTER, PA

- 1065 CV Corn White PA 50 dz Bin

LESTER WEAVER - LANCASTER, PA

- 758 CV Cabbage Green 60-65 ct Bin
- 1075 CV Corn Bi-Color PA 50 dz Bin

STAUFFER HULING FARMS - LANCASTER, PA

- 482 CV Beans Green PA 25 lb
- 1062 CV Corn Bi-Color 24 ct
- 4106 CV Onions Sweet JBO PA 40 lb
- 4628 CV Onions Sweet PA 14/3 lb
- 4984 CV Pumpkins Face 40 ct Bin
- 4987 CV Pumpkins Face 60 ct Bin
- 2258 CV Squash Green MED PA 20 lb

SUN AQUA FARMS - DALTON, PA

- 443 CV Herb Basil Hydroponic 6 ct
- 442 CV Herb Basil Hydroponic 12 ct

SUNRISE ACRES - LANCASTER PA

- 23070 CV Tomatoes Vine Ripe XL PA 25 lb
- 23118 CV Tomatoes Round LG 6x6 25 lb
- 21450 CV Tomatoes VR 4x5 20 lb 2-layer

LABOR DAY HOLIDAY SCHEDULE

MONDAY 8/26 - SATURDAY 8/31
Standard delivery and office schedule.

SUNDAY 9/1
Sales office open 8:30am to 1pm for order changes and add ons for your Tuesday 9/3 deliveries.

MONDAY 9/2 (LABOR DAY)
Office closed. No deliveries.

TUESDAY 9/3 & WEDNESDAY 9/4
Standard delivery and office schedule.

Talk to your sales rep or merchandiser to place preorders for some seasonal items!

BLACK WALNUTS WE'RE NOT YOUR TYPICAL WALNUT.



SHOPPER-FRIENDLY DISPLAY
SHIPPER THAT REQUIRES ONLY
2 SQUARE FEET
OF FLOOR SPACE



JUST ADD.

4-CASE APPLE CRISP SHIPPER



FRUIT GLACE



SWEETENED REAL FRUIT





ORGANIC "GRAPE-TACULAR" DISPLAY CONTEST

SEPTEMBER 2 - SEPTEMBER 30, 2019

Four Seasons Produce has partnered with Sun Pacific, marketers of Air Chief label Premium Organic Grapes, to bring you a display contest with "grape" potential for added sales and excitement. These grapes are absolutely the best grape around and September is the perfect month to build big displays and promote! Grapes are a perfect back to school snack, and all three colors will be featured, so there is sure to be a flavor for everyone!

CONTEST CRITERIA:

- Build an awesome display of Air Chief label organic grapes with fruit purchased from Four Seasons Produce

CODE: 42682 - Air Chief Organic Black Grapes

CODE: 43885 - Air Chief Organic Green Grapes

CODE: 43878 - Air Chief Organic Red Grapes

- Must carry all three colors to qualify for entry
- Display must show the Air Chief brand (boxes are OK)
- Displays must be up for a minimum of one week
- Send all contest entries to Steph Mayer (stephf@fsproduce.com) by Thursday October 3rd.



PRIZES:

Prizes will be awarded for 1st, 2nd and 3rd place finishers for the following categories:

LARGEST DISPLAY (PLANET OF THE GRAPES)

MOST CREATIVE DISPLAY (GRAPE X SCAPE)

1st - Xbox One X Package

2nd - Drone Package

3rd - Facebook Portal

Honorable Mention - \$100 Gift Card



TIPS FOR MERCHANDISING GRAPES:

- Merchandise grapes in high traffic areas for the best visibility
- Be sure to keep fresh. Cull out any bad berries.
- Ribbon all three colors together using greens to break the color.
- Sell grapes in both bulk and bag.
- Package up all three colors together for a nice tri-color pack



PHONE: 1.800.422.8384

FAX: 1.717.721.2597

WWW.FSPRODUCE.COM



MARKET NEWS

CONVENTIONAL OUTLOOK

PUMPKINS & ORNAMENTALS SEASON

Starbucks began offering their seasonal Pumpkin Spice Latte on August 27th. The real **Pumpkin** season is starting too! Do you have your seasonal display and porch resets planned?

Early field reports on the **Local Pumpkin** crops look strong. **Face Pumpkins (Jack-O-Lantern/Carving)** will be in stock at Four Seasons the week of Labor Day, and will ramp up volumes throughout the month of September.

The rest of the **Varietal Pumpkins** will also be available the first week of September in light supplies as most growers are just beginning harvests on the **Autumn Mix Blends, Fall Fantasy Mix, Fairytale, White Pumpkins**, and many more!

Fall Ornamentals like **Gourds, Jack-Be-Littles, Baby Boo, Pokemons (Tiger Stripe), Straw Bales, Corn Stalks**, and more will all be available by mid-September to get all those fall displays built!

Look for more to be available every day, and also be on the lookout for the Dan Schantz **Hand-Painted Pumpkin** pre-order forms coming out soon as well!



CV APPLES

On **Eastern Apples**, we've had **Ginger Gold, Gala, and Honeycrisp Apples** start, with **McIntosh Apples** starting Labor Day weekend, and **Red Apples** the first week of September.

In Washington, we've had **Rave, Ginger Gold, and Gala Apples**, with **Gold Delicious Apples** just starting to pack. **Granny Smith** and **Fuji Apples** could start as early as the first or second week of September.



CV GRAPES

Supplies and quality of **Grapes** are very good. Fruit is mostly large and extra-large with a few of the smaller fruit which are held to good prices due the short supply.

The first week of September, **Pretty Lady Scarlet Royal Red Seedless, Midnight Beauty Black** and their **Emerald Green Seedless Grapes**, which promise to have huge berries as we've seen in the past, will begin to ship. Expect prices to be a couple of dollars higher on these varieties.

Cotton Candy Grapes will be available in limited quantities.



CV PEARS

Washington is going on **Bartlett and Starkrimson (Red) Pears**, with **Bosc and Anjou Pears** starting by the middle of September.

California has a full rundown of **Pears** and are looking for business - look for spot deals.



CV BRUSSELS SPROUTS

Brussels Sprouts are in good supply, but even better supplies are right around the corner. Get ready for promotable opportunities on sprouts in September as supplies increase for growers in California.



CV SWEET CORN

Sweet Corn prices will be very promotable again this week. PA and DE growers are still harvesting in good numbers. Look to continue to promote locally grown **Sweet Corn** this week!



CV PINEAPPLES

We are finally seeing a break in the **Pineapple** market. With a little more fruit coming in we will see a significant drop by Labor Day.



CV LETTUCE

Romaine and **Iceberg Lettuce** will be improving in supply for the beginning of September, and pricing should begin to slide. Quality on both has been excellent from California and Quebec. The Canadian season will last until mid to late-September.



CV WATERMELONS

Watermelon prices will be promotable this week. As the unofficial end of summer is upon us, growers are going to want to keep moving late harvest fruit. Fruit will be mainly from Delaware as new fields are being harvested. Quality has looked very nice.



CV CELERY

Celery is in excellent supply once again this week from California. We will have plenty of 24's, 30's, and hearts all week. Quality has been solid. Look for this market to turn higher over the next couple weeks as supplies begin to drop.



CV POTATOES

The country is relatively short on **Russet Potato** inventory. This is expected to continue until the beginning of September. Pricing will remain flat until more product becomes available.

Red and **Gold Bagged Potatoes** are in good supply out of Minnesota and pricing has come off a little this week to reflect the good availability. New crop Idaho bagged **Russet Potatoes** have started this week and quality is looking very nice.

10/5lb **Jersey Fresh White Potatoes** are in promotable supply.



CV PEPPERS

15lb **Red Pepper (Elongated/La Rouge)** prices are becoming more promotable for early September. Markets are softening with more harvests starting up. 15lb **Fancy Yellow Peppers** already started to flush with very promotable pricing this week. Quality looks good on this new crop pepper.

11lb **Red, Yellow, and Orange Bell Pepper** prices are coming down to more promotable pricing. Quality has looked very nice from Canada and Holland. Product from Mexico is also becoming more available.

Green Peppers continue to be promotable from PA and NJ as markets are weakening. Quality has been very nice all local season. Continue to promote!



CV ASPARAGUS

ALERT! Asparagus prices remain extremely tight out of Peru this week. New fields are being harvested, but cooler temperatures, lack of air and boat vessels, and now the threat of Hurricane Dorian expected to hit Florida as early as Saturday, could tighten up markets even more.

Prices are expected to remain volatile for early September.



CV LIMES

ALERT! There is still a short supply of **Limes** coming in, along with heavy shrink. Prices are up again and have doubled since the middle of August. We will probably see a very strong market through the month of September.



CV CUCUMBERS

Super Select **Cucumber** prices will be on the rise this week, however they will remain promotable. Some regions are finishing up and gaping due to some cooler nighttime temps, leaving less product available causing the slight rise in prices. Quality has been nice this local season.



CV ONIONS

We are in full swing on **PA Simply Sweet Onions**. Pricing is steady and quality looks very nice!

The **Yellow Onion** market continues to soften this week because of nice quality new crop product being available in multiple growing regions.



CV HASS AVOCADOS

The **Hass Avocado** market will continue to drop for the first week of September with more fruit crossing from Mexico.



CV NEW/BACK IN SEASON

California **Pomegranates** (36 ct to start), **Rambutan**, **Star Fruit**, **Mann's Caulilini** (6/10oz bag), **Sugar Kiss Melons**, and **NatureSweet Comets Tomatoes**.



CV GREEN BEANS

Green Bean prices remain promotable this week. Quality out of PA, NY, and Canada have all looked very nice. Continue to promote with confidence!



CV CAULIFLOWER & BROCCOLI

Cauliflower had been in a flush during late August from California, however harvest volume is turning around and pricing is going back up heading into September.

Broccoli supplies are lighter out west and it has been too dry in the Maine growing region to get the yields they were expecting, so pricing overall is on the rise heading into September.

LOCAL OUTLOOK:

Bin Stem Broccoli and **Jacket Cauliflower** will start around mid-September from local growers here in PA. The crop is looking excellent, and quality will be outstanding. Get ready for bin **Broccoli** and **Cauliflower**!



CV BERRIES

Strawberries will continue to be in good supply for this upcoming week. In talking with the growers, as long as the weather cooperates, expect steady supplies and consistent pricing over the next couple weeks. Quality has improved and will be better going forward. All berries are being sourced from Salinas and Watsonville, CA areas.

Blueberries are in much tighter supply this week. Michigan and British Columbia are basically finished for the season, and now we're having to shift to Peruvian imports. We'll have excellent supply this week on all 6 oz. and pints from Peru, but pricing has jumped up quickly. The Peruvian Blueberries have excellent bloom, firmness, and sizing.

Blackberries are in tighter supply this week from California. Look for pricing to remain higher.

Raspberries are in excellent supply, and pricing has dropped back to promotable levels. Now is a good time to promote all 6 oz **Raspberries**.



CV TOMATOES

Grape Tomato prices will start to rise a bit this week. Local PA-grown are coming to an end for the season, and an overall lack of availability is causing more demand. We will be switching to more Canadian **Hothouse Tomatoes**, with small amounts of PA-grown being available sporadically.

Roma Tomato prices will be very promotable this week from Tennessee. Quality has looked very nice.

Lancaster County, PA **Round Field Grown Tomatoes** will continue to be available this week. Prices are strengthening a bit as lower volumes are coming out of farms. Cooler weather has slowed numbers and harvests down. However, DE Jumbo **Round Tomatoes** are still coming in good volume and great quality. Prices will be more promotable on the DE grown.

Hothouse Beefsteak and **Cluster Tomato** markets will remain steady this week. As Canada starts to finish up, Mexico is just beginning harvests. Quality on both has been nice.