

# ORGANIC MARKET NEWS



AUGUST 26 - SEPTEMBER 2, 2022

## NEW CROP ORGANIC PEARS



Late summer marks the beginning of fresh crop USA **Organic Pear** season!

California growers have been shipping certain varieties for a few weeks, and Oregon and Washington growers are starting to ramp up their harvests here in late August. September through November will be prime time for new crop **Organic Pear** promotions.

**Organic Asian Pears** from California are arriving with outstanding quality and juiciness. The late August variety is "Hosui," which has a light brown skin.

**Organic Green Bartlett Pears** continue in season from California, and the first Washington fruit is expected to arrive to the east coast at the beginning of September. This variety changes color from green to yellow as they ripen at room temp.

**Organic Starkrimson Red Pears** out of Oregon will be in stock on the east coast right around Labor Day. This variety also changes color to a more vivid red as they ripen.

**Organic Bosc Pears** from California will be around through the end of August but then gap until later September when Oregon and Washington come into season.



### OG GRAPES

Supply continues to get better on **Organic Grapes** from California. September should be on of the best times of year to promote!

**Organic Red Grapes** are transitioning into premium varieties like "Krissy," "Sweet Celebration," and "Scarlett Royal." Size, texture, and flavor should be good.

**Organic Green Grapes** are in great supply with excellent quality with "Sweet Globes," "Great Greens," and "Autumn King" being the top 3 varieties in for late August and early September.

We are some nice specialty offerings to enhance your **Organic Grape** sets: "Candy Snap," "Sweet Carnival", and Thomcords.

**Organic Cotton Candy Grapes** are expected for early September.



### OG TOMATOES

Local **Organic Grape, Cherry, and Rainbow Cherry Tomatoes** from Lady Moon Farms are plentiful out of PA, along with some other local farms in PA and NJ.

Lancaster County, PA **Organic Vine Ripe Tomatoes** are available from King Family Farm, and this crop is really starting to increase with volume due to heat.

Lady Moon Farms continues in season with their field-grown local **Organic Heirloom Tomatoes** program for late August and early September.

Local **Organic Roma Tomatoes** are coming in from King Family Farm in PA. Production will be good for the rest of August. Prices and availability are expected to remain steady as we head into September.



### OG BERRIES

**Organic Blackberry** prices remain steady with good supplies and nice quality fruit out of California. Mexico production is expected to begin Mid-end of September.

**Organic Raspberries** remain steady ahead of the Labor Day weekend. Quality has been excellent, and supplies are steady.

**NOTE: Organic Blueberry** prices are rising quickly as production out of the Pacific Northwest is finishing rapidly. There are Peruvian imports coming in as well, and quality has been excellent. Overall supplies will tighten up and prices will rise with less availability.

**NOTE: Organic Strawberry** prices are rising ahead of Labor Day weekend as supplies continue to dwindle and demand exceeds supplies. Quality has been nice as new areas are beginning harvests, but volume is very limited.





## OG BROCCOLI

**ALERT!** Organic Broccoli and Broccoli Crowns from California will only see light volumes for early September. Quality issues, such as pin rot and aphids, are preventing growers from harvesting.

Quebec supplies are available in light volumes for **Organic Bunched Broccoli**.

**Organic Sweet Baby Broccoli** will remain steady in volume and pricing.



## OG CAULIFLOWER

**Organic Cauliflower** from California is experiencing lighter supply volumes in late August as quality issues have presented themselves in fields. Lighter volumes throughout the remainder of August and into September should be expected, as well as create price increases.

Supplies from Quebec are steadily available with good quality to supplement any shortages from California.



## OG HASS AVOCADOS

**Organic Hass Avocados** continue to be in good supply, making it a good time to promote.

Peruvian fruit, along with the availability of some late season California fruit, have driven prices on Mexican fruit downward. 60ct fruit remain tighter than 48ct fruit.



## OG SALADS

**NOTE:** organicgirl, and other **Organic Salad** producers, are facing challenges with the INSV Virus, a plant virus transferred from field to field by insects. This plant virus hinders growth and development, and requires additional inspection on harvested crops.

organicgirl product impacted by this virus includes **Organic Green Butter**, **Red Butter**, and **Romaine Lettuces**. For early September, **Organic Butter Lettuce**, **Little Gems**, and **Romaine Heart Leaves** will be unavailable.

**Organic Butter Plus** and 3 pack **Romaine** will be available in very limited quantities.



## OG GREENS

**Organic Collards, Kales, Chards, and Dandelions** have been procured from various regions during August to stay in stock.

As September approaches, and temperatures begin to cool, PA's fall crop **Organic Greens** season will begin. Harvests could start as early as the final week of August for some PA growers. Lady Moon Farms projects supplies to begin in mid-September for their local line-up.



## OG FIGS

**Organic Fresh Brown Turkey** and **Black Mission Figs** continue to be in great supply.

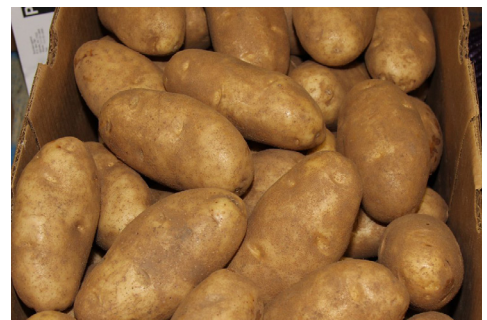
**Organic Green Sierra Figs** will be very limited as the season moves along. The green varieties are very delicate and must be sold quickly.



## OG MELONS

**Organic Cantaloupe** and **Honeydew** are in great supply with excellent quality and prices coming off. 12ct **Organic Cantaloupes** will be promotable for the end of August. **Organic Galia Melons** will finish for the season by the beginning of September.

**Organic Mini Watermelons** remain available from PA and CA. Quality has been excellent on the local harvests as local farmers are in peak production. California has plenty of supplies as well to fill in any shorts. Quality has been excellent.



## OG POTATOES

The first arrival of new crop Wisconsin **Organic Russet Potatoes** arrived in late August! Pricing on the new crop will be down a bit from where we were seeing CA product hit in at.

New crop Wisconsin **Organic Red** and **Gold Potatoes** will be the next region we transition to in early September, which should provide some better price points.



## OG SWEET CORN

**Organic Bi-Color Sweet Corn** yields have remained steady. Although PA is experiencing light volumes in late August, supplies from New York remain strong. Both regions are expected to harvest good numbers in early September with strong quality.





## OG STONE FRUIT

**Organic Nectarines** will be in decent supply for late August and early September, while **Organic Peaches** will be a little light until Stemilt starts their next variety in early to mid-September.



## OG LEMONS

New crop **Organic Lemons** out of California and Mexico are just starting to harvest. Expect supplies and quality to improve weekly and be in excellent supply towards the end of September.



## OG LOCAL LADY MOON VEG

Local **Organic Eggplant**, **Green Bell Peppers**, **Jalapeno Peppers**, and **Zucchini** from Lady Moon Farms in Chambersburg, PA remain in peak supply and pricing in late August.



## OG TROPICALS

**Organic Mangos** are firming up in availability from Mexico, and sizing will get bigger for early September when we get into the prime NHWT (non-hot water treated) fruit which is known for exceptional eating experience.

**Organic Honey Ataulfo Mangos** will be done at the beginning of September.

**NOTE:** **Organic Royal Star Papayas** availability will be steady but heavy monsoonal rains have affected the shelf life and quality of fruit.

There are a few **Organic Eat & Drink Coconuts** available for the end of August. **ALERT!** **Organic Young Thai Coconuts** are gapping.

**NOTE:** **Organic Pineapple** volumes will continue to be lower on 6 and 8ct fruit for the end of August and into September. Rain has become a factor in Costa Rica, the primary growing spot for this fruit.



## OG LETTUCES

**ALERT!** **Organic Romaine Lettuce** from California continues to harvest minimal yields heading into September. The disease "INSV", which makes the crop un-harvestable, is leading to suppliers only achieving about 50% or less of their expected yields.

**Organic Green** and **Red Leaf Lettuces** from California are not faced the same issues, however increased demand by the lack of Romaine is expected to effect supply volume and increase pricing. Supplies from Quebec remain in strong supply and quality throughout August.

**ALERT!** **Organic Romaine Hearts** and **Iceberg Lettuce** from California continue to face issues such as aphid pressure, "INSV," and light weights. Yields will only be about half of what was planned for late August and early September. These factors have decreased volumes and driven prices up during late August. Quebec supplies remain available in limited quantities to help supplement the lack of California supplies.



## OG CUCUMBERS

**Organic Euro Seedless Cucumbers** are expected to remain steady with promotable prices going into September. Quality is outstanding.

**Organic Mini Seedless Cucumbers** have tightened up a bit as many shippers have already started to transition their crops. Quality is excellent and there is not a lot of product around, but volumes should increase as we head into the middle of September.

**Organic Cucumbers** have suffered from quality issues throughout the local season this year and has ended for most growers. We've switched to new crop Mexican product to get better quality and availability until **Organic Cucumbers** are available out of the southeast later this fall.

## OTHER STORIES

- **Organic Celery** and **Celery Hearts** from California remain promotable in late August. Supplies are expected remain steady with promotable pricing and strong quality into early September.

- Local **Organic Green Beans** from PA continue to yield strong volumes with excellent quality and pricing.

- **NOTE:** We will see a short gap on **Organic Stoke Purple Sweet Potatoes**. The old crop supply on this product is now finished and new crop is expected to get started towards the first week of September.

- **NOTE:** **Organic Asparagus** prices will increase and as we head into September with the Mexican crop winding down. Availability will not be as good.

- **ALERT!** Superior Fresh will be making changes to their greenhouse system which will put them out of production on their **Organic Salad Greens** line for around 2 months. This line has been discontinued at Four Seasons at this time due to this gap.





# LOCAL LIST

AUGUST 19 - AUGUST 26, 2022



## ORGANIC



**LADY MOON FARMS**



**LANCASTER FARM FRESH**



**DEEP ROOT**

### **Amos King - Lancaster, PA**

- 41379 - OG Tomatoes Grape 12/1pt
- 43805 - OG Watermelons Mini 35 lb 6 ct
- 41434 - OG Watermelons Mini 35lb 8ct

### **Clarion River - Sligo, PA**

- 41255 - OG Peppers Poblano 10 lb

### **Deep Root - Johnson, VT**

- 40487 - OG Beets Chiogga 25 lb
- 40491 - OG Burdock Root 10 lb
- 43566 - OG Greens Kale Red 24 ct
- 40724 - OG Parsley Flat Leaf PREM 30 ct (Italian)
- 40723 - OG Parsley Curly PREM 30 ct
- 40297 - OG Squash Yellow 20 lb
- 40623 - OG Sunchoke White 10 lb

### **Eagle Shadow Farm (Samuel Stoltzfus) - Millville, PA**

- 40485 - OG Beets Red 25 lb

### **Eastern Fresh Growers - Cedarville NJ**

- 41398 - OG Tomatoes Grape Gold 12/1 pt
- 41379 - OG Tomatoes Grape 12/1 pt

### **Flaim Farm - Vineland NJ**

- 40485 - OG Beets Red 25 lb
- 40488 - OG Beets Red Bunched 12 ct
- 40532 - OG Beets Red Bunched PREM 24 ct

- 40510 - OG Bok Choy PREM 35 lb
- 40513 - OG Bok Choy Baby PREM 20 lb
- 40515 - OG Cabbage Napa 35 lb
- 40650 - OG Dandelion 12 ct
- 40210 - OG Herb Dill 24 ct
- 40209 - OG Herb Dill 12 ct
- 40671 - OG Greens Collard 12 ct
- 40672 - OG Greens Kale 12 ct
- 219525 - OG Herb Mint 12 ct
- 40912 - OG Leeks Bulk PREM 20 lb
- 40786 - OG Peppers Habanero 10 lb
- 40804 - OG Peppers Serrano 10 lb

### **Green Field Farms - Wooster, OH**

- 41434 - OG Watermelons Mini 30 lb 8 ct

### **King Family Farm - New Holland, PA**

- 41535 - OG Onions Sweet Jumbo 40 lb
- 41536 - OG Onions Sweet Jumbo MED 40 lb
- 41531 - OG Onions Red Jumbo 40 lb
- 41525 - OG Onions Red MD 40 lb
- 41330 - OG Tomatoes Beefsteak 10lb
- 42305 - OG Tomatoes Roma 20lb
- 41357 - OG Tomatoes Round 20 lb

### **Joesph Weaver - Ephrata, PA**

- 40462 - OG Corn Bi-Color 48 ct

### **Lady Moon Farm - Chambersburg, PA**

- 40639 - OG Eggplant PREM 24 lb Lady Moon
- 40796 - OG Peppers Green PREM 25 lb

- 40838 - OG Peppers Jalapeno 10 lb
- 231688 - OG Peppers Mini-Mix Sweet 18/10 oz Clam
- 41020 - OG Squash Green PREM 20 lb Lady Moon
- 41336 - OG Tomatoes Grape Premium 12/1 pt
- 41385 - OG Tomatoes Cherry Rainbow 12/1 pt
- 41346 - OG Tomatoes Cherry 12/1 pt Clamshell

### **Lancaster Farm Fresh - Lancaster, PA**

- 40454 - OG Cabbage Red PREM 45 lb
- 40518 - OG Cabbage Savoy 35 lb
- 40650 - OG Dandelion 12 ct
- 40628 - OG Dandelion PREM 24 ct
- 40670 - OG Greens Collard 24 ct
- 40675 - OG Greens Kale 24 ct
- 228711 - OG Peppers Mini-Mix Sweet 8/1 pt Clam
- 40789 - OG Peppers Red USA 11 lb
- 40297 - OG Squash Yellow 20 lb

### **Pedersen Farms - Seneca Castle, NY**

- 40548 - OG Cabbage Green PREM 45 lb
- 40454 - OG Cabbage Red PREM 45 lb
- 40462 - OG Corn Bi-Color 48 ct
- 40675 - OG Greens Kale 24 ct
- 40676 - OG Greens Kale Lacinato 24 ct

### **Reed Family Farm - Elizabethtown, PA**

- 40376 - OG Beans Green 25 lb



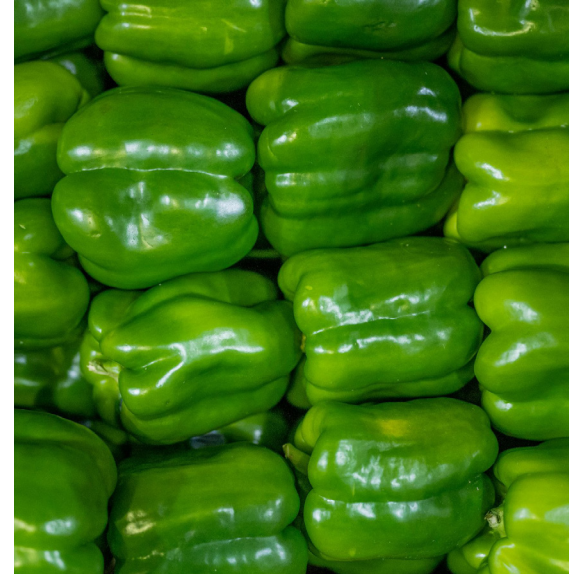


# LOCAL LIST

## AUGUST 19 - AUGUST 26, 2022



### CONVENTIONAL



#### **Benedict Farms - Chambersburg, PA**

2255 - CV Squash Green MD Local 20 lb  
2338 - CV Squash Yellow MD Local 20 lb

#### **Cedar Meadows Farm - Lancaster County, PA**

23156 - CV Tomatoes Heirloom PA 15 lb

#### **Copenhaver Farm, Lebanon PA**

480 - CV Beans Green 25lb

#### **Driscoll's Berries (Pastore Farms) - Hammonton, NJ**

222142 - CV Blueberries Sweetest Batch 8/11 oz

#### **Eastern Fresh Growers - Cedarville NJ**

1837 - CV Peppers Green JBO Local 22 lb  
229433 - CV Peppers Green JBO/XL 22 lb  
2255 - CV Squash Green MD Local 20 lb  
23069 - CV Tomatoes Vine Ripe XL NJ 25 lb

#### **Falling Spring Fruit Farm - Chambersburg, PA**

1062 - CV Corn Bi-color 48ct

#### **Fifer Orchards - Camden, DE**

1062 - CV Corn Bi-color 48ct  
1086 - CV Corn Bi-color 50 dz bin  
1060 - CV Corn White 48 ct  
1084 - CV Corn White 50 dz bin  
228499 - CV Tomatoes Vine Ripe XL/JBO 25 lb

#### **Flaim Farm - Vineland NJ**

205 - CV Arugula 24ct  
550 - CV Beets Red Bunched 12 ct  
591 - CV Bok Choy 30 lb  
592 - CV Bok Choy Baby Shanghai 30 lb  
750 - CV Cabbage Green 50 lb  
1670 - CV Cabbage Napa 30 lb  
795 - CV Cabbage Savoy 30 lb  
780 - CV Cabbage Red 50 lb  
1308 - CV Greens Collard NJ 18 ct  
1285 - CV Eggplant Italian NJ 10 lb  
1275 - CV Eggplant Graffiti NJ 12 lb  
1273 - CV Eggplant Sicilian NJ 20 lb  
1315 - CV Greens Kale NJ 18 ct

455 - CV Herb Basil 15 ct

1510 - CV Herb Mint 12 ct Box

1967 - CV Peppers Jalapeno 35 lb

2255 - CV Squash Green MD Local 20 lb

2334 - CV Squash Zucchini Gold Bar 20 lb

2338 - CV Squash Yellow MD Local 20 lb

#### **Hollabaugh Bros - Biglerville, PA**

*\*Special wood crate program available by request*

*\*232425 - CV Apples Honeycrisp PA 25 lb Crate*

*\*225688 - CV Peaches 2.5" 25 lb Crate*

*\*228453 - CV Peaches White 2.5" 25 lb Crate*

#### **Hess Bros - Lancaster, PA**

5030 - CV Apples Gala 2.5" East 12/3 lb Bag  
5475 - CV Apples Gala East 40 lb 72/88 ct  
5471 - CV Apples Gala East 40 lb 100 ct  
5123 - CV Apples Gala East 8/5 lb Bag  
5168 - CV Apples Gala East 38 lb 8 ct Tote Bag  
5294 - CV Apples Ginger Gold East 40 lb 72/88 ct  
5175 - CV Apples Ginger Gold East 40 lb 8 ct Tote Bag  
5017 - CV Apples Ginger Gold East 12/3 lb Bag  
5476 - CV Apples Honeycrisp East 40 lb 72/88 ct

#### **Hess Farm - Ephrata, PA**

480 - CV Beans Green 25 lb  
2819 - CV Cucumbers Super 72ct  
2845 - CV Cucumbers Kirby 40lb  
1837 - CV Peppers Green JBO 22 lb  
229433 - CV Peppers Green JBO/XL 22 lb  
1967 - CV Peppers Jalapeno 35 lb  
2255 - CV Squash Green MD 20 lb  
2338 - CV Squash Yellow MD 20 lb

#### **Jersey Fruit - Hammonton, NJ**

15672 - CV Peaches 2 3/4" East 25 lb  
15684 - CV Peaches 3" NJ 25 lb  
15685 - CV Peaches White 2 3/4" East 25 lb

#### **Joshua Weaver - Ephrata PA**

780 - CV Cabbage Red 50lb  
1084 - CV Corn White Local 50 dz Bin

#### **Lester Weaver - Lancaster, PA**

1086 - CV Corn Bi-color 50 dz bin

#### **Little Bear Produce - Denton, MD**

11997 - CV Watermelons 45 ct 15# Avg Bin

#### **Nardelli Lake View Farms, Cedarville NJ**

1670 - CV Cabbage Napa 30 lb  
795 - CV Cabbage Savoy 30 lb  
1062 - CV Corn Bi-color 48ct  
1099 - CV Corn Bi-color 12/4 ct tray  
1060 - CV Corn White 48ct  
2819 - CV Cucumbers Super 72ct  
2845 - CV Cucumbers Kirby 40lb  
1345 - CV Greens Mustard 12 ct  
1350 - CV Greens Turnip 12 ct  
2255 - CV Squash Green MD 20 lb

#### **Sam Zook - Lancaster, PA**

23305 - CV Tomatoes Grape PA 12/1 pt

#### **Six L's/Lipman - WEST DEPTFORD, NJ**

1837 - CV Peppers Green JBO 22 lb  
229433 - CV Peppers Green JBO/XL 22 lb  
2255 - CV Squash Green MD Local 20 lb  
2338 - CV Squash Yellow MD Local 20 lb

#### **Stauffer Huling Farms - Lancaster, PA**

4106 - CV Onions Sweet JBO PA 40 lb  
4628 - CV Onions Sweet PA 14/3 lb

#### **Vincent Farm - Delmar, DE**

1062 - CV Corn Bi-color 48ct  
1086 - CV Corn Bi-color 50 dz bin  
1060 - CV Corn White 48 ct  
1084 - CV Corn White 50 dz bin  
11991 - CV Watermelons 60 ct 11# Avg Bin  
11997 - CV Watermelons 45 ct 15# Avg Bin



# BACK TO SCHOOL DISPLAY CONTEST

August 28 - September 24, 2022



Shorter days and cooler nights are starting to become the trend, so that must mean it's almost September. This year Little Potato Company and Four Seasons Produce are partnering again to support a Back to School Display Contest. As the cooler weather sets in and dinner routines change with bigger meals becoming the norm again, your shoppers are looking for creative ways to spice up dinner. Is there a better item to compliment their meals than Little Potatoes? They are quick to cook, nutritious and delicious. This versatile item lends well and has little risk for the retailers. Now is the time to build some eye catching displays that will generate excitement, get your shoppers thinking differently and grow your sales. If you are interested in participating in this year's contest we can certainly help. Please contact your Sales Rep or Merchandiser and we can help you gain additional Back to School sales and welcome those Fall Shoppers.

## CRITERIA:

- All product must be purchased from Four Seasons Produce
- A minimum of 10 cases on display
- Use of 1.5 LB bags, 3-LB bags and Micro shippers are all permitted and should include at least two different items
- Pictures must be sent to [contests@fsproduce.com](mailto:contests@fsproduce.com) no later than September 29



## CODES:

218975 - POS Display Bins  
212058 - 36/1 LB Variety Shippers  
213073 - Blushing Belle 16/1.5 LB CV bags  
213062 - Boomer Gold 16/1.5 LB CV bags  
213075 - Dynamic Duo 16/1.5 LB CV bags  
213074 - Terrific Trio 16/1.5 LB CV bags  
218906 - Boomer Gold 3-LB CV bags  
218908 - Terrific Trio 3-LB CV bags  
218909 - Dynamic Duo 3-LB CV bags  
218907 - Blushing Belle 3-LB CV bags  
212054 - CV Roasted Pepper 6/1 LB tray  
212052 - CV Onion Chive 6/1 LB tray  
212051 - CV Garlic 6/1 LB tray  
212056 - CV Garlic Parsley 6/1 LB tray  
222885 - CV Lemon Garlic 6/1 LB tray  
229351 - CV Smoked Salt 6/1 LB tray  
212055 - CV Savory Herb 6/1 LB tray



## PRIZES:

### 1<sup>ST</sup> PLACE

\$150 VISA GIFT CARD

### 2<sup>ND</sup> PLACE

\$125 VISA GIFT CARD

### 3<sup>RD</sup> PLACE

\$75 VISA GIFT CARD



PHONE: 1.800.422.8384

| [www.fsproduce.com](http://www.fsproduce.com)





# ORGANIC STONE FRUIT DISPLAY CONTEST WINNERS

**July 4th - July 31st, 2022**

The results are in for our annual Homegrown Organic Stone Fruit Display Contest! It was an awesome month of selling super premium stone fruit from Homegrown Organic. The hot weather in July was a perfect time for consumers looking for that perfect piece of refreshing stone fruit to eat. As a result, we saw some really "sweet" artwork on display in stores. Check out some of the winners below. Thank you to everyone who participated in this display contest!

**1st**



**GRAND PRIZE WINNER!**

GreenStar Food Co-op - Ithaca, NY

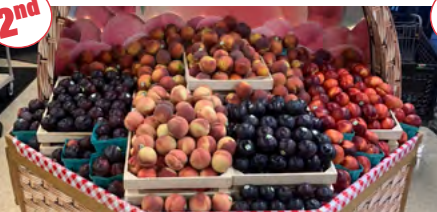


**MOST CREATIVE**

**1st**



**2nd**



**3rd**



**FIRST PLACE**

Fiddlehead Food Co-op - New London, CT

**SECOND PLACE**

East End Food Co-op - Pittsburgh, PA

**THIRD PLACE**

Brattleboro Food Co-op - Brattleboro, VT

**LARGEST**

**1st**



**2nd**



**3rd**



**FIRST PLACE**

Leg Up Farmers Market - York, PA

**SECOND PLACE**

Weaver Markets - Denver, PA

**THIRD PLACE**

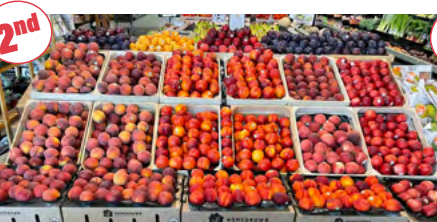
Monadnock Food Co-op - Keene, NH

**BEST SMALL STORE**

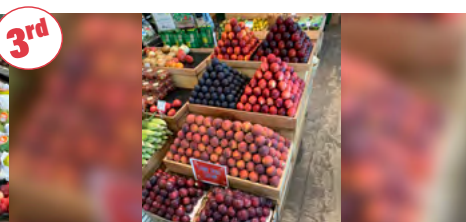
**1st**



**2nd**



**3rd**



**FIRST PLACE**

Hudson Greene Market - Jersey City, NJ

**SECOND PLACE**

Nature's Pantry - New Windsor, NY

**THIRD PLACE**

Friendly City Food Co-op - Harrisonburg, VA



# CONVENTIONAL MARKET NEWS

AUGUST 26 - SEPTEMBER 2, 2022

## PUMPKINS & ORNAMENTALS OUTLOOK



The local 2022 crop of **Pumpkins** and **Ornamentals** is looking great!

What growers are reporting so far is that quality in the fields is looking good due to the fairly dry August that we have had. The other result of this hot dry August is that harvests will take place up to 2 weeks earlier than planned.

What does this mean? The season will get off to an excellent start, but supplies on some varieties could run tight or run out in the 2 weeks leading up to Halloween. For this year, we're recommending retailers get their fall decorative sets up early and promote during late September and early October.

**Face Pumpkins** are expected to be plentiful this year with less issues around labor, supplies, or quality. **Heirloom/Specialty Pumpkins** will end early in October due to starting early. Pricing is expected to be similar to last year with a slight increase due to higher fuel costs for shipping.

Four Seasons Produce will be stocking a wide variety of **Pumpkins** and **Ornamentals** with the very first selections coming into stock Labor Day weekend. Variety will increase throughout September. Keep an eye out for pre-order surveys painted items and specialty decoratives, along with a flyer of our full 2022 fall selection.



### CV STONE FRUIT

**Cherries** are just about finished, but here and there in late August and early September, we'll have some nice quality high-elevation grown fruit, including Stemilt's "Moon Cherries".

California **Nectarines** are winding down quickly for the season and may wrap up as early as mid-September.

**NOTE:** Prima/Wawona will be shipping most of the rest of their crop in Wawona Sweet2Eat boxes instead of the Prima boxes. It will be the same fruit and premium quality.

Eastern **Peaches** are coming up on late season varieties. NJ and PA supplies will still be available during September, but could end abruptly based on weather.

**Red and Black Plums** are in their last varieties of the season and are expected to finish for the season over the next couple of weeks if not sooner. Strong demand is sending prices higher.

There are many fantastic **Pluot/Plumcots** now in season.



### CV PEPPERS

**Green Pepper** market will be promotable as we head into September. There is a lot of quality jumbo fruit out there and shippers are looking to deal. We will continue to source product from NJ, DE, and PA. Quality has been excellent!

**Chili Pepper** varieties are available out of NJ and PA. Prices are expected to stay steady. Quality and availability are excellent.

11lb **Color Bell Pepper** prices are expected to dip as Canada is flushing and Mexico is coming into the market. California is still experiencing issues with availability due to the lack of water.

15lb **Red Pepper** prices and volumes will remain steady but California is not expecting larger supplies until the beginning of September, and this keeps getting pushed back. Quality is excellent.

**Mini Mix Sweet Pepper** prices will continue to ease down towards the end of the month. Quality has been excellent.



### CV BERRIES

**Blackberry** prices and harvests remain steady ahead of Labor Day. Quality out of CA has been excellent. Mexico will be begin light production soon.

Driscoll's is also now resuming shipments of their **Sweetest Batch Blackberries** in 10oz packs. These taste amazing!

**NOTE:** **Blueberry** prices are rising significantly as BC/Michigan fruit begins to finish. Supplies out of Peru are coming in but harvests aren't yet at a peak production. Quality has been good but expect tighter supplies and stronger demand ahead of Labor Day weekend.

**Raspberry** supplies are still overall snug, and prices are on the higher side. Production is expected to pick up at the beginning of September, leading to more promotable markets mid-end of September.

**ALERT! Strawberries** remain very tight ahead of the Labor Day holiday. Prices will remain high, and availability will be tight as demand continues to exceed supplies. Quality has improved as new areas are starting, but production is still limited.





## CV TROPICALS

**Hass Avocados** continue to be promotable from Peru and Mexico. 48ct fruit is more readily available than the 60ct.

**Pineapples** will continue to be tighter for the end of August. Prices will remain steady.

**Mangos** are steady but look to transition into bigger sizing. Brazilian fruit will also be starting up for early September, so this will help keep pricing manageable. Smaller sizes should be available from Brazil.

A late shot of nice **Ataulfo Honey Mangos** will keep Four Seasons in stock for the very beginning of September.



## CV GRAPES

**Red Seedless Grapes** are getting better in quality as we transition into nicer crops ("Sweet Celebration", "Timco," and "Magenta").

**Green Seedless Grapes** are still in good supply with excellent arrivals as we transition into "Great Greens," "Sweet Globes," and "Autumn King" for late August and early September.

On premium **Green Grapes**, the "Sugar Drops" will wrap up by Labor Day, but will then transition to "Esteem", followed by the very popular "Green Emerald" in mid-September. "**Stella Bella**" **Green Grapes** continue in season.



## CV MELONS

**Seedless Watermelon** prices are steady ahead of Labor Day weekend. There is more availability on the smaller sizes as the season dwindles down. Delaware and North Carolina are continuing to harvest. PA is finished and Maryland availability is limited. Quality has still been excellent.

**Cantaloupes** are now promotable out of California with excellent quality and flavor expected for early September.

**Honeydews** are in light volume between plantings in California. **Variety Melons** are winding down for the season, but there will be some hot deals on **Sugar Kiss** and **Summer Kiss** for early September.



## CV ASPARAGUS

**Asparagus** prices are expected to decrease as we head into September. Mexico and Peru will have limited availability but will start to ramp up production by September. Labor Day holiday pulls may keep the prices flat until after the holiday. Quality has been good.



## CV PEARS

**Bartlett Pears** are expected to transition from California to Washington at the beginning of September. Excellent supplies are expected.

**Bosc Pears** are limited out of California but will hopefully get us through another few weeks until Washington starts up towards the end of September.



## CV CAULIFLOWER

California and Maine **Cauliflower** will be dropping back in volume a little bit as we head into Labor Day weekend. Quality has been decent.



## CV LETTUCE

**ALERT!** The **Lettuce** category is struggling primarily because of the "INSV" disease that California growers are dealing with. Quality has been hit or miss from California, and Quebec growers do not have enough to supplement all the needs. Expect expensive pricing and so-so quality through early September.



## CV FRESH FIGS

**Black Mission Figs** will be steady for the month of September. **Green Sierra Figs** will be done on the east coast as the trek across country is becoming too tough for the quality to withstand.



## CV BROCCOLI

Maine **Broccoli Crown** growers still have great supplies but are starting to feel a stronger demand since California **Broccoli Crowns** supplies are low. Pricing will increase somewhat for September.





## CV CUCUMBERS

**Super Select Cucumber** prices are expected to remain steady as we head into September. We are seeing some quality issues, and product that is good quality is higher priced.

There is still local product coming out of NJ and PA. Quality is outstanding and new fields are starting but is expected to still be short into September.

**Euro Seedless Cucumber** prices are expected to come down as shippers out of Canada will start to flush again heading into September. We are seeing some excellent quality.



## CV TOMATOES

**Grape Tomatoes** continue in season from Lancaster County, PA. Quality has been outstanding.

**Vine Ripe Round Tomato** prices are expected to remain steady and then start to increase as we head into September. The Quality has been outstanding. Product is available from DE, NJ, and PA. With the heat really bringing on production now, could cause increased pricing and a gap in product as we approach mid-September.

**Snacking Specialty Tomatoes** from Nature Sweet will be promotable through September with promotions of different varieties. Availability is excellent and quality has been superb.

**Roma Tomatoes** are very promotable as we head into September. Supplies will remain steady. Product will still be out of PA and Mexico.



## CV SWEET CORN

**Sweet Corn** prices are inching back up as we head towards Labor Day from DE, NJ, and PA. Quality has been excellent.

There is also **Sweet Corn** coming into the market from out west, as well as NY.

Since local growers' plantings have been coming on earlier than expected due to the heat, **Sweet Corn** will get more limited in September.



## CV CITRUS

Import **Mandarins** are in great supply with outstanding quality. We will see very promotable pricing through September with great quality. We are out of the "Clementine" variety and into "Tangos" and "W Murcotts" pulling mainly out of Uruguay, South Africa, and Chile, while Peru is winding down. The summer "Halos" season has started with outstanding quality.

**NOTE: Limes** will continue to increase in price and decrease in quality out of Mexico while yields slowly decrease due to drought conditions. This will curtail harvesting and we will see less availability going forward with quality issues as well.

**Navel Oranges** continue to be imported with 56ct, 72ct, 88ct, and 9/3lb. Smaller fruit remains in abundance while larger fruit remains tight and hard to come for the month of September. We are pulling from South Africa and Chile mainly as quality remains outstanding!



## CV POTATOES

We are back in stock on Green Giant bagged potatoes in new crop **Russets** from Oregon. We hope to get back into new crop **Russet Potatoes** from Idaho in the Green Giant label in a couple weeks.

Off-label **Russet Potatoes** will get towards at the end of August with demand being extremely high. Current product is actually new crop shipper label Idaho Russet Potatoes.

10/5lb Local New Jersey **Red Potatoes** will finish up the last week of August. The next Red Potato region will be Minnesota. This product is expected to be really nice quality - some of the nicest Reds we have seen in months.

**NOTE: Count Russet Potatoes** remain strong this week with shippers just getting started on new crop Idaho **Count Russet Potatoes**. Large counts have been very tight.



## CV APPLES

Washington and Eastern **Gala Apples** are now in good supply in all sizes and packs, including tote bags and 12/3lb and 8/5lb poly bags.

The first **Ginger Gold Apples** have arrived out of both east and west coast. A good supply is expected until **Gold Delicious Apples** start in October.

The first of the Eastern **Honeycrisp Apples** are expected to start for the end of August. Excellent supplies are expected.

**Pink Lady Apples** out of Washington will finish for the season in September, and then transition into imports for a few weeks before new crop is expected out of Washington towards the end of October.

**Rave Apples** are moving very well and are now expected to finish for the season by the end of September at the latest.