

# ORGANIC MARKET NEWS



MAY 15 - MAY 22, 2020

## ORGANIC STONE FRUIT SEASON BEGINS



California **Organic Apricots** are now in season.

California **Organic Cherries** are in season. Expect fairly light supplies with high pricing. So far the quality has been pretty good.

The Washington **Organic Cherries** crop is rumored to be smaller this season, leading to some bigger size fruit, and right now barring any weather events, quality is looking really good Washington should start at the beginning of June.

The first California **Organic White and Yellow Nectarines** are expected to arrive on the east coast around 5/19 and should ramp up quickly to excellent supplies with great quality.



California **Organic Yellow Peaches** are also in season, and excellent supplies with good sizing are ramping up for headed towards June. California **Organic White Peaches** are now available.

The first California **Organic Donut Peaches** are in season and will be available to add to displays.



### OG MELONS

**Organic Seedless Watermelons** out of Mexico will be available for Memorial Day promotion and quality has been great. Supplies should be steady, though demand has been very strong so far.

**Organic Mini Watermelons** will be available this week and quality has been very nice out of Mexico.

**Organic Cantaloupe** and **Honeydew** from Mexico have come into season. Prices are a little steep to get started, but will come down towards late May.



### OG PEPPERS

New crop **Organic Green Peppers** are now beginning to harvest in Coachella, CA. Expect quality to be outstanding, however pricing will remain very elevated in May. **Organic Green Peppers** from Georgia are also expected to begin harvesting in mid-May.

**Organic Red, Yellow, and Orange Bell Peppers** still remain a struggle as Canada and Holland has yet to hit their full stride. Look for inconsistent and elevated pricing to continue in May, however, late May or early June will see peak in production on Holland product which will provide a promotional opportunity or what has been a consistently high market.

**Organic Mini Sweet Pepper** bags continue to see great availability; however, pricing is expected to be slightly elevated as we head into mid-May.



### OG BROCCOLI & CAULIFLOWER

**Organic Broccoli** from California continues to see excellent supplies, quality, and pricing in mid-May, before we see pricing begin to rise towards the end of the month. Also expect to see east coast production mixed in with California product. The rest of the month will be excellent to promote.

**Organic Broccoli Rabe** and **Organic Sweet Baby Broccoli** are also seeing great supplies in mid-May and will be promotable for the next couple weeks!

**Organic Cauliflower** from California has finally seen a relief in pricing and an uptick in production in mid-May. Quality and pricing are expected to stay excellent and aggressive before we see pricing begin to rise again towards the end of the month.



## OG BERRIES

**Organic Blackberries, Raspberries, and Blueberries** out of California and Mexico are in excellent supply with promotional opportunities available.

**NOTE: Organic Strawberry** supplies out of California and Mexico have firmed up quite a bit with multiple days of rain, causing loss of product. With peak harvest volume now behind us, pricing will go up a little but quality has remained good, after all, we are still in strawberry season.



## OG BEANS & PEAS

**Organic Green Beans** from Georgia have begun in early to mid-May and are looking excellent in quality!

Also, as C&B Farms has transitioned to Georgia, look for their **Organic Pouch Bag Green Beans** to return here in mid-May.

Look for **Organic Snap Peas** and **Fava Beans** in mid-May from California with great quality and pricing as crops are really producing high quantities!



## OG ARTICHOKE

**Organic Artichokes** from California are seeing excellent quality and steady supplies in mid-May. Look for good pricing and excellent quality to get in your stores.



## OG TOMATOES

**Organic Heirloom Tomatoes** from local grower, Toigo Farms in PA, will be promotable this week. Quality is excellent.

**Organic Beefsteak Tomatoes** will be promotable this week out of Canada. Quality has been excellent. **Organic Cluster Tomato** prices are rising this week as demand remains strong. Quality has been very nice.

**Organic Grape Tomatoes** from Lady Moon Farms will be available this week from their Georgia farm. Quality should be excellent on their 1st harvests.



## OG SWEET POTATOES

**NOTE:** 48ct wrapped **Organic Jewel Sweet Potatoes** (code 41663) will be back in stock for mid-May.

We will continue to see out of stocks on the 12/2ct trays and 18/1 lb **Organic Baby Mix Sweet Potato** trays for the foreseeable future as AV Thomas/Natural Beauty focuses all of its production on 40lb bulk cases.



## OG CUBED BUTTERNUT

Olivia's Organic is done with their fall/winter cubed butternut program, so we are now carrying 6/20 oz **Organic Cubed Butternut Squash** from Freshline in code 224726.



## OG LETTUCE

**Organic Leaf Lettuces** from Lady Moon Farms in Georgia are seeing excellent volumes and quality for mid-May.

**Organic Romaine Hearts** continue to see excellent quality and good pricing in mid-May. Pricing will be on the rise in late May or the beginning of June due to most growers planting less for the summer months and continued strong demand, especially on packaged product.



## OG ASPARAGUS

**ALERT!** **Organic Asparagus** prices will be rising some this week as areas start to finish and local production was stalled due to unseasonably cooler temps in the region. Quality has been very nice but there could be some gaps in supplies ahead of Memorial Day.

New York grown **Organic Asparagus** is expected in late May or June, along with product from the Pacific Northwest.



## OG CELERY

**NOTE: Organic Celery** for California continues to be a struggle as far as quality is concerned. Although supplies are available at a consistent price, quality has been less than ideal in early to mid-May. As some grower/shippers move into new fields in late May or early June, expect pricing to rise, but quality to improve.



### OG KIWIFRUIT

New Zealand **Organic SunGold Kiwifruit** are now available! This favorite variety is super sweet and a great way to kick off summer early! We are offering a new 8/1lb clamshell this year, alongside our regular volume filled boxes!

New Zealand **Organic Green Kiwifruit** will be available closer to the end of the month of May.



### OG CUCUMBERS & SQUASH

Lady Moon Farms' Georgia **Organic Cucumber** season has begun and will continue to see improving supplies as we move towards the end of the month.

**Organic Cucumbers** from Mexico continue to see excellent supplies and aggressive pricing in mid-May but is expected to slow down and raise pricing as we head towards the end of the month.

**Organic Mini** and **Seedless Euro Cucumbers** continue to see steady supplies; however, pricing is expected to be on the rise as we head towards the late May due to increasing labor difficulties.

**Organic Green Squash** from Lady Moon Farms in Florida and Georgia are in peak production. Expect excellent quality, steady supplies, and promotable pricing in May.

**Organic Yellow Squash** from Mexico is starting to see limited supplies in mid-May. Expect pricing to rise and to see gaps in supplies until more east coast shippers are yielding more crops.

- **Organic Leeks** are back in steady supply after a long gap in production due sizing issues and less than ideal growing conditions.

- **Organic Bok Choy, Baby Bok Choy, and Baby Red Bok Choy** from Lady Moon Farms in Georgia has concluded harvesting in early May. Supplies in California are very limited currently as well. Look to see limited supplies and gaps in supplies as we head into mid-May. The outlook is projected to improve on the west coast as we head toward late May.



### OG GRAPES

The first Mexican **Organic Green Grapes** are now in season!

**Organic Red** and **Black Grapes** are expected to begin in late May, with some **Organic Candy Snaps** and **Cotton Candy Grapes** expected in early to mid-June.



### OG TROPICALS

**Organic Tommy Atkins Mangos** from Mexico are coming into good availability in the few weeks. Demand has been very high in the industry. Pricing should begin to drop.

**Organic Honey Ataulfo Mangos** will be slightly limited for mid-May.

Haitian **Organic Fair-Trade Mangos** continue in peak season and are expected to be available through early July.

**Organic Cherimoya** fruit from California will be available in very limited supplies for next week.

**Organic Jackfruit** will be available in limited supply for next week from Florida.

**Organic Hass Avocados** will remain steady in supply for mid-May. With Peruvian fruit beginning to be introduced in the marketplace, pricing has dropped. California and Mexico pricing will be down.

48ct and 60ct **Organic Fair-Trade Hass Avocados** from Peru are now available! This fruit should be available through July.

### OTHER STORIES

- **ALERT!** **Organic Ginger** from Mexico and Peru will be very limited again Demand has been very high and Mexico and Peru are winding down. Very limited new crop Peruvian **Organic Ginger** will be available in late May.

- **ALERT!** **Organic Garlic** continues to be very limited with higher prices. Each week supplies are coming in just a bit more. **Organic 5lb Peeled Garlic** is available.

- **Organic Cabbages** are seeing limited supplies as well as very elevated pricing until new fields begin in June.



### OG SWEET CORN

**Organic Bi-Color Sweet Corn** from Cal-O is beginning in mid-May, just in time for stores to get them on their shelves for Memorial Day! Look for this item to continue into the summer months as we will pull from various regions as they begin.



### OG CITRUS

**NOTE:** California **Organic Navel Orange** supplies are wrapping up for the season. We will transition to a nice size crop of **Organic Valencia Oranges** by early June.

California **Organic Golden Nugget Mandarins** have popped back up with a surprise last delivery or two and then we will be done for the season.

California **Organic Cara Cara Oranges** are going to wrap up for the season by the end of May.

California **Organic Grapefruit** are in firm supply with steady prices.

California **Organic Lemons** are in firm supply with steady prices. Mexico is supposed to get started by early June and ramp up with a good crop through the summer. Hopefully this will keep summer pricing from reaching peak levels.

Mexican **Organic Lime** supplies continue in good steady supply.

- **NOTE:** We will see Peri & Sons **Organic Onions** get started this week out of California. This means the product will be a short day onion, with flakier skin (see the next page).

- **Organic Brussels Sprouts** continue to see steady supplies and excellent quality coming from Mexico. Covilli **Organic Fair Trade Brussels Sprouts** continue to see outstanding arrivals and gives stores an opportunity to promote a Fair Trade item.

# Peri's Summer Season

## Sun-Loving Onions of Every Variety!

Spring/summer onion varieties are called "short-day" because they are planted in the fall and their growing patterns are matched to days with shorter periods of sunlight. Fall/winter onion varieties are called "long-day" because they are planted in the spring and their growing patterns are matched to long days filled with sunshine. This difference in growing times and seed varieties results in a difference in the onion's characteristics.

Short-Day Onions	Long-Day Onions
Thinner, lighter-colored skins	Thicker, opaque glossy skins
More mottled appearance	More evenly-toned appearance
Higher water ratio makes them softer	Less water ratio makes them denser
Tendency to mark, nick or bruise easier	Firmer and less likely to nick or bruise
Softer onions have a shorter shelf-life	Firmer onions have a longer shelf-life
Available May through July	Available August through April
Sweet onion harvest begins in May	Sweet onion harvest begins in July
Best used fresh and not over-cooked	Hold up better in cooked dishes



**NOTE:** Four Seasons inventory will be transitioning to short-day onions starting in May.



Yellow Spring Onions

Our fall/winter season in Nevada just ended and our spring/summer onion season is beginning in California. It's all part of Peri & Sons Farms Onions All Year® program. Logistically it's a seamless process for our customers; our premium-quality onions are ordered and shipped just as they are from Nevada. But, there is a slight difference – it's the difference between the look and make-up of a **short-day onion** vs. a **long-day onion**, no matter which California farm grows it.



White Spring Onions



Red Spring Onions



Sweet Spring Onions



# FOUR SEASONS PRODUCE LOCAL LIST: May 15 - May 22, 2020

## CONVENTIONAL

**FIFER ORCHARDS - Wyoming, DE**  
358 - CV Asparagus Standard DE 28 lb

**FLAIM FARMS - Vineland, NJ**  
205 - CV Arugula 24 ct  
1362 - CV Chard Green NJ 12ct  
1170 - CV Dandelion Bunch NJ 12 ct  
1308 - CV Greens Collard NJ 18 lb  
1315 - CV Greens Kale NJ 18 lb  
1510 - CV Herb Mint NJ 12ct Box  
1475 - CV Leeks Bunched 12ct  
3042 - CV Lettuce Boston 24 ct  
3050 - CV Lettuce Green Leaf NJ 20 lb 24 ct  
3065 - CV Lettuce Red Leaf NJ 20 lb 24 ct  
3097 - CV Lettuce Romaine 35 lb 24 ct  
2205 - CV Spinach Bunched 24 ct

**NARDELLI LAKE VIEW FARMS - Cedarville, NJ**  
2876 - CV Endive (Chicory) NJ 24 ct  
2900 - CV Escarole NJ 24 ct  
1315 - CV Greens Kale NJ 18 lb  
1510 - CV Herb Mint NJ 12ct Box  
1475 - CV Leeks Bunched 12ct  
3042 - CV Lettuce Boston 24 ct  
3050 - CV Lettuce Green Leaf NJ 20 lb 24 ct  
3065 - CV Lettuce Red Leaf NJ 20 lb 24 ct  
3097 - CV Lettuce Romaine 35 lb 24 ct  
2205 - CV Spinach Bunched 24 ct

**EASTERN FRESH GROWERS - Cedarville, NJ**  
357 - CV Asparagus NJ 28 lb

## ORGANIC

**EASTERN FRESH GROWERS - Cedarville, NJ**  
40325 - OG Asparagus NJ 11lb

**FLAIM FARMS - Vineland, NJ**  
40208 - OG Arugula Premium NJ 24 ct  
40650 - OG Dandelion NJ 12 ct  
40900 - OG Spinach Bunched NJ 24 ct  
219525 - OG Herb Mint NJ 12 ct  
40210 - OG Herb Dill NJ 24 ct  
41159 - OG Lettuce Green Leaf Prem NJ 24 ct



**NARDELLI**



**FIFER ORCHARDS**

## MEMORIAL DAY OFFICE & DELIVERY SCHEDULE

### **SATURDAY (5/23):**

Normal office and delivery schedule (Sunday orders due by 10 am).

### **SUNDAY (5/24):**

Normal office and delivery schedule.

### **MONDAY (5/25):**

Normal delivery schedule, office open 8:30 am - 12:30 pm, taking orders for Tuesday 5/26 delivery.

**Please contact your sales rep with any questions!**

**Have a safe & healthy Memorial Day weekend!**

# MEMORIAL DAY MERCHANDISING TIPS

## MAY 25, 2020

### A VERY DIFFERENT PICNIC HOLIDAY

While the World is still dealing with the Covid-19 Pandemic and practicing social distancing, how customers celebrate Memorial Day this year will certainly be different. Instead of big gatherings or large family picnics, this year many of us will pull out our own grill to create a backyard BBQ for our own family.

Here are some ideas below to help prepare your department, create excitement, and drive sales on the items your customers may be looking for.

There are many unknowns due to the situation we are in, but we continue to salute all of you in retail working so hard to stay safe and provide fresh food for the communities that rely on you.

### MERCHANDISING TIPS

- Your **fruit counters** should be reset with fresh crop stone fruit, soft fruit, grapes, cherries and melons by **Thursday, May 21st**. Cut back on Apples, Pears, and Citrus. Don't play catchup through the holiday weekend, especially on the seasonal product.

- Expand your **berry sections**. Full variety is available on Organic and Conventional Berries.

- Your **vegetable counters** also need to have some adjustments made. It's time to cut back the spacing on the hard cooking vegetables such as turnips, winter squashes, parsnips, etc. **Key items to expand:** Corn, Lettuces, Tomatoes, Celery, Cabbage & Slaw Mix, Green & Colored Peppers, Cucumbers, Radishes, Scallions, Portabella Mushroom Caps & Slices, Vidalia Onions, and New Potatoes.

- Many retailers don't have enough labor to keep up with in-store fresh cut and extensive hand stacking of displays. Consumers are also favoring packaged and bagged options. Consider promoting **big packs** and **bags** this holiday.



# POPULAR DISPLAY THEMES

## VEGGIE GRILLING:

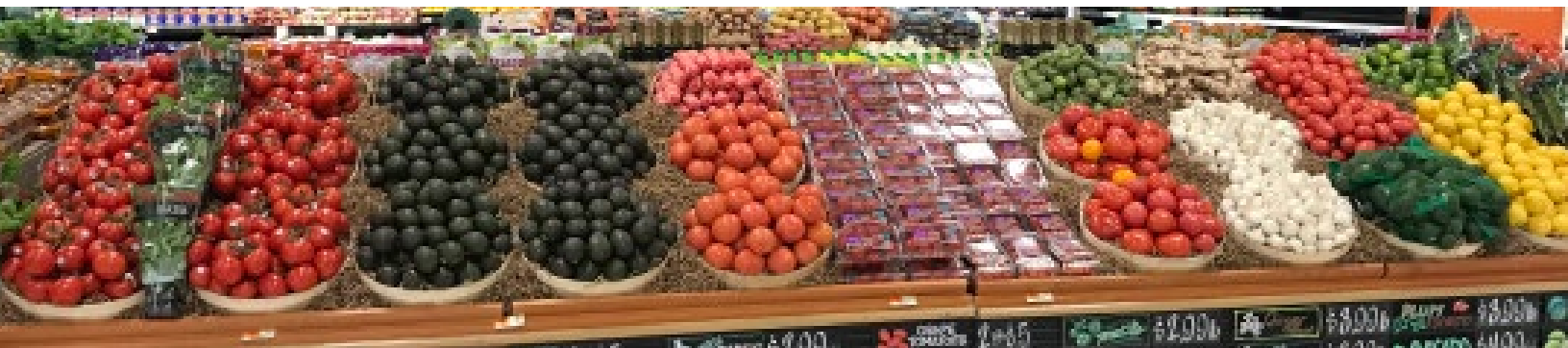
Try a display that includes: *Vidalia Onions, Colored Peppers, Asparagus, Portabella Mushroom Caps & Slices, Eggplant, Count Russet Potatoes, and Green & Yellow Squash.* You might even want to try a combination of these items at a common price per pound. Tie in “Garlic Expressions” and other marinades, and minced garlic.

## CORN CRAZY:

Build a large, secondary display of Sweet Corn, using a bin dummied up to control your display quantities. Position a clean trashcan at the display for your customers to shuck their corn. To make very good margin, trim, strip, and tray-pack 5 ears of Sweet Corn and get premium retail for the added value and convenience.

## TOMATO PATCH:

Create mass displays using *Grape, Vine Ripe, Beefsteak, Cocktail, Heirlooms, Mixed Cherry, and Cluster Tomatoes.* Be sure to add basil, fresh mozzarella and balsamic glaze to these displays.



# DELIVERIES & PLANNING

- Order your **hard goods** and **semi-perishables** to hit your store early - by **Wednesday, May 20** or **Thursday, May 21**. Get ‘em in and load up the department. These are items that you don’t want to be fooling with come the weekend: *Salad Dressings, Dips, Salsa, Juices, Croutons, Fruit Dips, Nuts, etc.* Have your evening associates pack out these sections during the slower times. Avoid that congestion in your aisle during busy hours.

- Bring in your **hard vegetables** and **Fruit** by **Thursday, May 21**. These lines and items include: *Potatoes, Onions, Carrots, Mini Carrots, Apples, Pears, Oranges, Lemons & Limes, Honeydew, Cantaloupe, Pineapples, and bin Watermelons.*

- We expect **Watermelons** to still sell fairly well for the holiday. Store Watermelons at room temperature.

- Build your **Sweet Corn** inventory, ordering it by the pallet and try to have it in by **Thursday, May 21**, or **Friday, May 22**, and keep it watered or iced down. 42 cases per pallet.

## PRO TIP:

Don’t be stuck waiting on a truck. Load up early and attempt to spread your tonnage throughout the week to help level the volume.

For more info: <https://spark.adobe.com/page/vd45EQpYK8anM/>



# CONVENTIONAL MARKET NEWS

MAY 15 - MAY 22, 2020

## PEAK SEASON FLORIDA SWEET CORN



**Sweet Corn** prices will be steady through the Memorial Day holiday. Quality out of Florida has been excellent all season.

**Bi-Color Sweet Corn** is the variety most readily available.

**NOTE:** Growers did not plant much **White Sweet Corn**, so we will continue to see sporadic supplies and gaps between plantings on the **White Corn**.

Trimmed and husked **Bi-Color Corn** in tray packs continue to be available.



### CV WATERMELONS

Florida **Seedless Watermelons** will be steady this week and remain strong. Quality out of Florida has been excellent all season. Demand has been high as the import deal has finished up.

**ALERT!** The Florida **Bin Athena Cantaloupe** season is a bust! Some growers are done with fields having so few melons they can't afford to pay the labor on it, even at these crazy high prices. Unbelievable! There have also been poor quality issues upon arrival. Georgia is running behind because of cold weather last week, pushing them back to a May 25th or 28th start.

**NOTE:** The South American **Cantaloupe** deal finished abruptly, and growers are not getting what they expected. Arizona started with small fruit, 15 and 18 ct, with very few 12ct. It may be a week or more before we see bigger fruit. Mexico is crossing fruit, but again mostly small fruit. Prices are higher on the larger fruit.



### CV STONE FRUIT

More **Stone Fruit** growers are coming online with their new crop production.

**Yellow** and **White Peaches** are in season, and **Yellow Nectarines** are coming in slowly, but will improve by mid to late May. We will have **White Nectarines** coming in mid to late May.

Plenty of **Apricot** growers are now in their peak and looking to promote.

California **Cherry** volume is building and prices are dropping. If weather keeps cooperating, we could see a good year, but the possibility of rain continues to loom for growers up north.

We will start with South Carolina **Peaches** on May 15th on 2-3/8" size. Color is going to be very nice. As far as bigger fruit, we may see some 2 1/2" by mid to late-May but it won't be many. It will be the first of June before we see a good volume of the bigger fruit.



### CV BERRIES

**Blackberries** continue to flush out of Mexico, and now is the time to promote! Get ready for super aggressive deals on Mexican **Blackberries**. Quality is very nice.

**NOTE:** **Blueberries** just started in North Carolina, and New Jersey plans to begin harvesting close to June 10th. Georgia volumes will be lighter this week, and even though North Carolina started, the volume won't be enough to cover all the demand. Look for pricing to climb leading up to Memorial Day. Quality on all east coast **Blueberries** has been excellent.

**NOTE:** **Raspberries** are in much tighter supply this week, and you'll begin to see pricing inch up as we move forward. Quality has been very nice.





### CV GRAPES

Mexican **Grapes** are starting to ramp up as more growers are crossing fruit in Nogales, AZ. We have had **Green Grapes**, but **Red Grapes** started crossing this week with some **Black** and **Cotton Candy Grapes**. There is still a good supply of Chilean fruit, mostly **Reds**, that are good quality and will be priced to move.



### CV BRUSSELS SPROUTS

**ALERT!** 25lb **Brussels Sprouts** are still extremely tight. Production has slowed down due to insects, "seeders", and water spotting (depending on the growing area). Expect **Brussels Sprouts** to remain tight through late May.



### CV STRAWBERRIES

**NOTE:** **Strawberries** will be in tighter supply this week from California.

Growers had expected a much larger flush after Mother's Day, however the yields in the Salinas/Watsonville, CA areas are lighter than expected. This, along with Oxnard finishing up abruptly, caused shippers to go into a prorated situation.

Quality will remain excellent going forward but look for pricing to climb slightly.



### CV CUCUMBERS

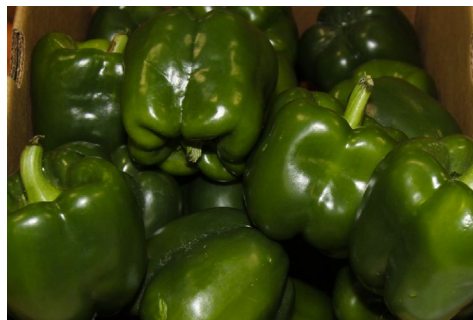
**Euro Seedless Cucumbers** out of Canada will be very promotable this week. Quality has been nice. **Mini "Cutecumbers"** will also be very promotable this week from Canada and quality has been nice.

**Super Select Cucumber** prices will be steady this week. Quality out of Mexico remains outstanding. Georgia is coming on with more product was well.



### CV ORANGES

**Navel Orange** growers keep pushing the market and will remain strong the remainder of the season, which should go through June. Even though demand is very strong, some growers could finish early. Most of the fruit is peaking on the 72ct and larger, with few 88 ct and little to no 113ct and smaller.



### CV PEPPERS

**NOTE:** **Green Pepper** prices remain very high this week. Georgia has started production; however, California demand remains strong and volumes have been limited due to weather challenges. Quality has been nice, but markets will be strong.

**11lb Red, Yellow, and Orange Pepper** prices will be easing off this week as more greenhouses start production out of Canada. Quality has looked strong.

**ALERT!** **Mini Sweet Pepper** prices remain high this week as harvests begin to finish up in Mexico and California is not ready yet. Canadian production is also limited.



### CV ASPARAGUS

**ALERT!** **Asparagus** prices higher than normal this week. Local harvests remain light with heavy demand. Peru is beginning to bring more product in; however, harvests are still light due to labor challenges. Mexican production remains steady and is staying mostly on the west coast. Michigan is slated to begin late this week depending on the temps and weather.



### CV GREEN BEANS

**Green Bean** prices are becoming more promotable as Georgia and Florida begin harvesting. Quality has been good from both regions.



### CV TOMATOES

**Grape Tomatoes** remain promotable this week. Quality out of Florida has been excellent.

**Beefsteak Tomato** prices are starting to ease off some as production begins to ramp up. Quality has been excellent. **Cluster Tomato** prices are steady and could see a slight increase as demand remains very strong. Quality has been excellent.

**Campari/Cocktail Tomato** prices remain steady this week as supplies remain tight. Quality has been very nice.

**NOTE:** **Round/Vine Ripe Tomato** prices will be high this week and steady. Demand remains strong ahead of the holiday. Most production will be coming out of Mexico as Florida begins to wind down.

**Roma Tomato** markets are coming off this week. Florida and Mexico both have good supplies coming in and quality has look excellent.



## CV MUSHROOMS

Industry-wide **Mushrooms** are behind in production for May and June, but the good news is our grower, Mother Earth/New Moon, has good volumes for us and our customers.

Consider adding the new 14 oz **Portabella** pack for the summer grilling season.



## CV BROCCOLI

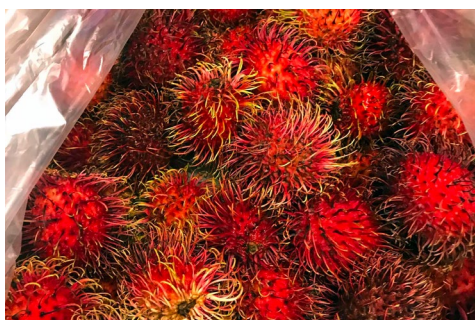
**Broccoli Crowns** were plentiful with the warm weather out of California and South Carolina. Now the warm weather has passed and cool weather swooped in (both coasts). **Broccoli** is going to go up in price headed towards late May.



## CV KIWIFRUIT

**SunGold Kiwifruit** are here from New Zealand! This popular, sweet piece of fruit is now available! We are offering a 13 lb volume filled pack, and also a new 8/1lb Clamshell for this year!

**Green Kiwifruit** from New Zealand will begin to take over the marketplace in a few weeks.



## CV TROPICALS/SPECIALTY

**Rambutan** will also be available again for the middle of next week. This is coming out of Mexico and will be offered in a 5lb bulk pack!

**Jackfruit, Quince, Fuyu Persimmons, and Que-nepas** will be available for mid-May.

**Mango** supplies have loosened as growers get caught up from a transition to northern crops. Supplies will be promotable going forward for a while. Expect to see pricing drop heading into late May.

**Ataulfo Honey Mangos** will be steady.

Haitian **Mangos** are in great supply for mid-May in 10/12ct boxes.

**Pineapple** are in good supply, but as June approaches they will be less available. This will continue through the summer months. Quality has been good!

**Hass Avocado** prices have started to drop a bit from prior weeks. With Peru starting to have a presence in the marketplace pricing in general is coming off just a bit.



## CV SALADS

**ALERT!** We are experiencing some heavy pro-rates on **Fresh Express Salads**, often over 1000 cases per day are being cut from our orders. This is due to high demand as well as lower attendance and social distancing challenges at the Pennsylvania facility due to COVID-19.



## CV POTATOES

**Gold and Red Potatoes** will start out of Arizona this week. Pricing will be up a couple dollars from what we were seeing out of Idaho, but the quality will be noticeably better.



## CV SQUASH

**Green and Yellow Squash** prices will remain promotable this week as the transition from Florida to Georgia has been smooth. Mexico also continues to offer product as well.

We will transition over to new crop Mexican grown **Hard Squash** this week. Pricing will be down slightly as good supplies are coming to market. We will also be back in stock on **Kabocha Squash** (code 2365).



## CV LETTUCE

**Iceberg and Leaf Lettuces** are coming in great supply.

**Red Leaf, Green Leaf, Romaine, and Boston Lettuce** are in peak season from New Jersey as well.