



ORGANIC MARKET NEWS



MAY 10 - MAY 17, 2024

ORGANIC MELON SPRING CROP



GOOD NEWS! Organic Seedless Watermelon bins are now in season. Quality is outstanding out of Mexico!

NOTE: Organic Mini Watermelon supplies have tightened up a bit out of Mexico. Strong demand is the driving force. Quality has been excellent, and supplies are expected to increase as May continues.

GOOD NEWS! Organic Cantaloupes are back in season from Mexico with great quality.

NOTE: Organic Honeydews are in sporadic supply and will remain limited through May.



OG BERRIES

Mid-May will be an outstanding time to promote **Organic Berries!**

GOOD NEWS! Organic Blackberries continue to be promotable out of Mexico. Quality has been very nice.

GOOD NEWS! Organic Blueberries are very promotable out of Georgia. Quality has been excellent. Supplies are very strong.

GOOD NEWS! Organic Strawberries are very promotable out of California. Quality has been excellent overall. Expect promotable pricing to pass on to consumers.

Organic Raspberry supplies have increased and should be fairly steady out of Mexico. Quality has been nice.



OG STONE FRUIT

Organic Apricots are in season and the first of the season fruit has been really good. Supplies will be spotty at first, but once the pipeline fills from California, excellent promotable supplies are expected. They will peak from the end of May and all of June.

The first **Organic Cherries** out of California are getting going. Supplies will be sporadic for mid-May, and then off to the races for the next 3-4 weeks out of California and right into Washington for a great season. We are expecting good supplies for Memorial Day.

California **Organic Nectarines, Yellow Peaches,** and **White Peaches** are just getting started in a light supply. Volumes will ramp up, and by Memorial Day, we should see steady supply moving into June promotions.

South Carolina **Organic Peaches** should be available for Memorial Day week.



OG MANGOS & AVOCADOS

Organic Mangos are in great supply. Great pricing is available for the middle of May, so promotions are encouraged! Look to especially promote 10/12ct fruit.

Organic Honey Ataulfo Mangos are available but are more limited than Round Mangos. 16/18ct sizing will be more readily available, and 12/14ct sizing will be limited for the month of May.

Delicious, grower-direct **Organic Dried Mangos** and **Dried Ataulfo Honey Mangos** are now available in stock from Crespo Organics! 20/4oz cases and 15/1lb cases are available.

Organic Hass Avocado supplies are steady. 60ct fruit is promotable for the middle of the month. Fruit quality has been excellent as end of season oil content is desirable. Expect fruit to ripen more quickly at room temperatures during this time.

NOTE: Equal Exchange **Organic Fair Trade Hass Avocados** will be more limited for the month of May. Fruit will be available in 48 and 60ct sizing, along with the ready-cycle 8/4ct trays.



OG BROCCOLI & CAULIFLOWER

Organic Broccoli is in steady supply because of production on both the East and West coasts.

Although **Organic Cauliflower** is still expensive, the quality remains exceptional. Mid to late May is expected to bring better fortune, as costs are anticipated to start dropping and volumes have started to rise in the early part of the month.



OG LETTUCE

Organic Leaf and **Romaine Lettuce** is beginning to grow up the East Coast. Early May saw a lull in production as the Lady Moon Farms' season came to a rapid end due to a sharp increase in temperatures in Georgia.

The **LOCAL** season in Pennsylvania and New Jersey is approaching. Anticipate these areas to start producing in mid-April and see a sharp rise in volume!



OG ONIONS

New crop **Organic Onions** are now under way out of the desert of California. **Organic Red** and **White Onions** will see an increase in market price as we make the transition into product of California.

Organic Yellow Onions will see a bit of a decrease in price as we make the switch over to California. The size profile in the early season **Organic Yellow Onions** is a bit smaller than what we are used to seeing and should improve in a couple weeks when we transition into northern California growing regions.



OG PEAS

GOOD NEWS! **Organic Snap Peas** are now consistently available in May. For **Organic Snap Peas**, look for 10lb bulk and 8/12oz packaging options that are compostable at affordable rates and in larger quantities.

Organic Purple Snap Peas and **Fava Beans** are also in supply!



OG SWEET KAROLINE

NEW! Now in season are a special new higher-flavor varietal of **Organic Blackberry** called "Sweet Karoline" from Hippie Organics.

Organic Sweet Karoline Blackberries are medium sized but pack lots of sweetness, old-time flavor, firm texture into every bite.



OG SQUASH & EGGPLANT

GOOD NEWS! **Organic Eggplant** from Lady Moon Farms will remain promotable through the end of May out of Florida. Continue to sell away with confidence as quality is outstanding!

GOOD NEWS! Lady Moon Farms **Organic Green Squash** has started in Georgia. They quality is outstanding, and volume is picking up quickly with the warm temperatures we are experiencing.



OG TOMATOES

GOOD NEWS! Greenhouse **Organic Beefsteak** and **Cluster Tomatoes** will be promotable through the end of May with a lot of volume coming out of Canada with fantastic quality.

GOOD NEWS! **Organic Cocktail Tomatoes** are abundant and promotable!



OG CHILI PEPPERS

Organic Mixed Color Hot Chili Peppers are available and look amazing. These are in a 10lb box and are a proprietary seed variety of a Serrano Pepper.

Organic Anaheim, Jalapeno, Poblano, and **Green Serrano Peppers** are also in stock in 10lb boxes.



OG CUCUMBERS

Lady Moon Farms **Organic Cucumbers** will be available with outstanding quality out of Georgia.

Organic Pickle (Kirby) Cucumbers are in house with amazing quality out of Mexico. This product will be steady through the month of May in a 40lb box.



OG SWEET CORN

Cal-O **Organic Bi-Color Sweet Corn** will be in season starting in mid-May!



OG GRAPES

There will be modest supplies of **Organic Green Grapes** from Northern Peru for mid-May. Harvests from Mexico will then begin later in the month.

Organic Green Grapes will begin first, with **Organic Black** and **Red Grapes** to follow a few days later.



OG POTATOES

New crop California grown premium **Organic Red** and **Gold Potatoes** are now here! Pricing has increased across the board on both A size and 16/3lb bags with the switch over to new crop **Organic Color Potatoes**, but the quality has been outstanding!



OG TROPICALS

Although somewhat limited, **Organic Royal Star Papayas** are available. Fruit sizing is currently very large. Quality has been good.

There will be a small amount of red skin/white flesh **Organic Dragon Fruit** for the middle of May.

NOTE: **Organic Pineapples** will be limited from Costa Rica for the month of May.

Organic Jackfruit will be available for the month of May in light supplies from Florida.



OG APPLES & PEARS

Washington **Organic Apple** supplies are tightening up a bit, but there are still plenty of options to choose from: **Organic Ambrosia, Cosmic Crisp, Envy, Fuji, Gala, Granny Smith, and Honeycrisp.**

NOTE: **Organic SugarBee Apples** are done for the season. **Organic Opal** and **Pazazz Apples** will finish for the season in mid-May.

Organic Diva Apples out of New Zealand are expected to arrive before the end of May.

Import **Organic Abate, Green Anjou, Red Anjou, Bartlett** and **Bosc Pears** continue in good supply with your favorites like **Abate, Green Anjou, Red Anjou, Bartlett** and **Bosc.**



OG CITRUS

Organic Mandarin supplies are becoming light but are still on pace to push into June.

NOTE: **Organic Cara Cara Oranges** are extremely tight and priced high from California. Expect limited availability and premium prices until supply runs dry.

NOTE: The **Organic Navel Orange** season is coming to a quick end. We will transition into **Organic Valencia Oranges** by mid-May.

Organic Lemon prices are rising due to District 1 ending. Supply and quality from District 2 is currently in good shape.

Organic Blood Oranges and **Minneola Tangelos** have finished up for the season.

OTHER STORIES

- The **Organic Ginger** market is still tight industry wide. Peruvian **Organic Ginger** is young, so expect the skin to be thinner. Try to keep this ginger turning quickly as the increased amount of moisture can affect shelf life.

- **ALERT!** May still presents many poor conditions for **Organic Celery**. Unfortunately, this trend will continue for the rest of the month, with a production lull in the final two weeks. Expect continued high prices and maybe even cost increases, along with persistently ugly quality and blemishes.

- There has been a steady yield of **Organic Green Beans** from Mexico, but as the month goes on, the amount produced will decrease. The California supply began in late April and will help counterbalance the decrease in Mexico.

- **NOTE:** **Organic Pomegranate Arils** will be done from Peru and will gap until late summer/early fall when domestic fruit begins.

- **Organic Purple Kohlrabi** is in season from California from Coke Farms

- **Organic Brussels Sprouts** from Mexico are still very popular and offer the best value in terms of both quality and price. As May goes on, and the Mexican growing season ends, things will begin to change. As long as the supply is still favorable, promote continuously.

- **LOCAL** Pennsylvania and Pacific Northwest **Organic Rhubarb** is in good steady supply.

- **NOTE:** Expect gaps on **Organic Green Kiwifruit** for the end of May. Volume-filled and clamshell options are available, but those supplies are drying up quickly and with nothing available from Chile or New Zealand yet. Gaps in the market will occur. Zespri **Organic SunGold Kiwifruit** from New Zealand will begin later!

- **NOTE:** **Organic Red Carrots** (bunched) from Cal-O are finished for the season and will gap.

- **Organic Rainbow Carrots** in 24/2lb bags have been in very sporadic supply.

MEMORIAL Day MERCHANDISING TIPS

MEMORIAL DAY IS MONDAY, MAY 27

MERCHANDISING ACTIONS

- **Timing!** Your fruit counters should be reset with fresh crop **Stone Fruit, Soft Fruit, Grapes, and Melons** by Thursday, May 23. Cut back on apples, pears, and citrus. Don't play catchup through the holiday weekend, especially on the seasonal product.

- **Expand your berry sections.** Full variety is available on organic and conventional berries during the spring peak!

- Your **vegetable counters** also need to have some adjustments made. Cut back the spacing on the hard cooking vegetables such as turnips, winter squashes, parsnips, etc. Key items to expand: **Corn, Lettuces, Tomatoes, Celery, Cabbage & Slaw Mix, Green & Colored Peppers, Cucumbers, Radishes, Scallions, Portabella Mushroom Caps & Slices, Sweet Onions, and New Potatoes.**

- **Drive sales and margin through melon displays.** Fine sharp price points for whole melons and also build large refrigerated or ice displays of cuts and halves, sold at higher per pound prices. This extra margin on cuts will provide nice profit mix and options for shoppers.



POPULAR DISPLAY THEMES

VEGGIE GRILLING:

Try a display that includes: **Vidalia Onions, Colored Peppers, Asparagus, Portabella Mushroom Caps & Slices, Eggplant, Count Russet Potatoes, and Green & Yellow Squash.**

You might even want to try a combination of these items at a common price per pound. Tie in “**Garlic Expressions**” and other marinades, and minced garlic.

CORN CRAZY:

Build a large, secondary display of **Sweet Corn**, using a bin dummied up to control your display quantities. Position a clean trashcan at the display for your customers to shuck their corn. To make very good margin, trim, strip, and tray-pack 5 ears of **Sweet Corn** and get premium retail for the added value and convenience.

TOMATO PATCH:

Create mass displays using **Grape, Vine Ripe, Beefsteak, Cocktail, Heirlooms, Mixed Cherry, and Cluster Tomatoes.** Be sure to add **Basil** to these displays.



DELIVERIES & PLANNING

- Order your **hard goods** and **semi-perishables** to hit your store early - by Tuesday, May 21 or Wednesday, May 22. Get 'em in and load up the department. These are items that you don't want to be fooling with come the weekend: **Salad Dressings, Dips, Salsa, Juices, Croutons, Fruit Dips, Nuts, etc.** Have your evening associates pack out these sections at night. Avoid that congestion in your aisle during business hours.

- Bring in your **hard vegetables** and **fruit** by Thursday, May 23. These lines and items include: **Potatoes, Onions, Carrots, Mini Carrots, Apples, Pears, Oranges, Lemons & Limes, Honeydew, Cantaloupe, Pineapples, and bin Watermelons.**

- There is no need to be overly cautious with bin **Watermelons**. This is only the beginning of the summer picnic season. Your risk is low even if you have a few extra melons after the holiday. Store Watermelons at room temperature.

- Bring in your **Sweet Corn** by the pallet and try to have it in by Thursday, May 23, and Friday, May 24, and keep it watered or iced down. 42 cases per pallet.



FOUR SEASONS MEMORIAL DAY SCHEDULE

SATURDAY 5/25:

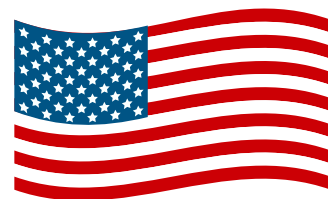
Normal office and delivery schedule.

SUNDAY 5/26:

Normal office and delivery schedule.

MONDAY 5/27:

Normal delivery schedule, office open 8:30am - 1:00pm, taking orders for Tuesday 5/28 delivery.



Please contact your sales representative with any questions.

Have a happy and safe Memorial Day!



CONVENTIONAL MARKET NEWS

MAY 10 - MAY 17, 2024

PROMOTABLE BLUEBERRIES

GOOD NEWS! Blueberries continue to be very promotable out of the Southeast as supplies continue to be plentiful. North Carolina just started harvests as well.

LOCAL New Jersey Blueberries should start in mid-June.



GOOD NEWS! Strawberries will continue to be promotable, though the mega flush is starting to clean up out of California. Expect pricing to inch up slightly as harvests clean up. Quality remains excellent and size is large.

GOOD NEWS! Blackberries are promotable out of Mexico. Quality is excellent and supplies are plentiful. Domestic deals out of Georgia will start by early June. Supplies should remain plentiful for the foreseeable future.

Raspberry pricing has eased off as more supplies came on out of Mexico. Expect decent supplies for the next week. Quality has been excellent.



CV SWEETEST BATCH BERRIES

GOOD NEWS! Driscoll's Sweetest Batch Berries lines are fully available out of California and Mexico!

The Sweetest Batch line are proprietary varieties that are grown for sugar and a flavor experience like no other berry on the market, delighting the end consumer. The fruit eats like candy and offers a consistent high flavor profile while in season.

We have all four Berries available right now: Strawberries, Raspberries, and Blueberries are coming in out of California, while Blackberries and Blueberries come in out of Mexico.

Blackberries will transition to CA in Mid-June. LOCAL "Barbra Anne" Sweetest Batch Blueberries out of New Jersey are a late crop variety that might be the best eating blueberry variety in the profile.

You can expect these treats mid to late July through mid-August (weather pending). Expect the Sweetest Batch line to have good supplies from now through late summer.



CV PEACHES & NECTARINES

California Peaches are in good supply with sizes improving and prices coming down. We will have some significant promotional opportunities on 60/64 size fruit here for Memorial Day promotions.

White Donut Peaches should be available by the end of May.

Eastern Peaches out of South Carolina and/or Georgia should also be arriving before the 20th of May - just in time for Memorial Day promotions. Good volumes are expected.

California Nectarines are a little limited but ramping up. They should be in good supply in mid-May, and then White Nectarines will be available as well.



CV APRICOTS & CHERRIES

There are excellent supplies of Apricots. This market is expected to ease down week after week as the pipeline fills. The fruit is eating and looking well.

California Dark Sweet Cherries are improving in size and quality by the day with prices coming down. Expect promotional supplies and pricing towards the end of the third week of May, offering great opportunities to promote for Memorial Day.

California Rainier Cherries will be available in early June. We will then gap until a nice big crop starts in Washington in late June.



CV SPECIALTY BEANS

Euro Long Beans are available from Canada. Product is arriving with outstanding quality. These are a greenhouse pole bean that can be used in many ways!

Spring **Fava Beans** are available and arriving from Mexico. They are looking fantastic.

Garbanzo Beans (Chickpeas) are available out of Mexico and arriving with out-of-this-world freshness.



CV MELONS

GOOD NEWS! **Seedless Watermelons** in bins out of Florida continue to be available. Quality has been excellent. Mexico and Texas also have fruit, and quality is very nice. We should start to see **Seeded Watermelon** varieties and **Sugar Baby** varieties to be available.

GOOD NEWS! While offshore **Cantaloupe** and **Honeydew** supplies are diminishing on the East Coast, Mexico is showing good quality early and similar prices to the offshore fruit. Continue to promote!



CV LETTUCE

NOTE: **Lettuce** prices have stabilized, but they are still high. Limited supplies are the result of restrictions and high costs associated with **Romaine Lettuce** in California, which has put additional strain on other segments of the category.

Fortunately, the second week of May marks the start of the **LOCAL** New Jersey **Leaf Lettuce** season! This will alleviate further pressure on the category.

NOTE: May will be difficult for **Romaine Hearts**, but **Iceberg Lettuce** has started the month with signs of price easing down.



CV BROCCOLI

As temperatures rise in Florida and Georgia, the production of **Broccoli Crowns** has slowed down, but North Carolina-grown **Broccoli Crowns** are still readily available, offering exceptional quality at competitive prices.



CV CAULIFLOWER

A favorable supply volume of **Cauliflower** has arrived in early May! Salinas Valley, California products are of exceptional quality, and prices have stabilized.



CV SQUASH

GOOD NEWS! **Green and Yellow Squash** will have promotable pricing by mid-May with a lot of volume coming on fast due to great weather.



CV TOMATOES

GOOD NEWS! **Beefsteak** and **Cluster Tomatoes** remain steady with quality, availability, and pricing into the end of May.

GOOD NEWS! There will also be plenty of spot buy opportunities on **Grape, Medley Snacking,** and **Cocktail Tomatoes!**



CV KIWIFRUIT

GOOD NEWS! Zespri **SunGold Kiwifruit** is now in stock from New Zealand. We have volume filled and clamshell options on fruit available now! Look for promotional opportunities leading up to Memorial Day the end of the month.

Green Kiwifruit pricing is dropping due to increased volume from Chile. Italy still has some fruit. Although volumes from that origin are down, and the season is almost complete.



CV LOCAL VEG

It's now **LOCAL** season! There will be more local offerings added throughout the month of May from New Jersey farms.

You can anticipate seeing things like **LOCAL Spinach, Leeks, Bunched Radishes,** and **Beets** throughout May! **LOCAL Bunched Herbs, Kales, Collards, Dandelion,** and **Chards** are in peak season now!



CV GRAPES

Chilean **Grapes** will go up to Memorial Day and overlap with the start of new crop Mexico.

June will be a great month to promote all colors of **Grapes** from Mexico! Get ready!



CV CITRUS

California **Mandarins** should continue into June with prices staying consistent. Morocco is finishing up as Uruguay is slowly starting. Import fruit could see a slight price increase until Chile gets going.

Fancy grade **Lemon** prices are rising as Choice grade is still very promotable.

Navel Oranges will continue through June with deals on large fruit until end of the season.

Cara Cara Orange supplies is getting light, and prices are rising. This season is coming to a close within the next few weeks.

NOTE: **Blood Oranges, Minneola Tangelos, Pixie's, and SUMO Citrus** have finished up for the season.

- **NOTE:** Fresh **Black Mission Figs** will be very limited for the middle of May. The Mexican season will wind down soon after that. The domestic **Figs** season is projected to begin in a little over a month.

- **Brussels Sprouts** are still in great supply and yield high-quality. While production is high, keep promoting bulk, mesh, or microwaveable bags.



CV PEPPERS

Sweet Snap Peppers from Nature Fresh out of Canada are available with an outstanding crunch. This long, multi-color pepper is great for snacking.



CV APPLES & PEARS

Washington **Apples** continue to be promotable including **Braeburn, Cosmic Crisp, Envy, Fuji, Gala, Gold Delicious, Granny Smith, Honeycrisp, Lemonade, Pink Lady, Red Delicious, Rockit, and SugarBee** varieties.

Eastern **Apples** are also promotable: **Evercrisp, Fuji, Gala, Gold Delicious, Honeycrisp, McIntosh, Pink lady, Red Delicious, Rome, Ruby Frost, Snap Dragon, Wild Twist, and SweeTango.**

Washington Fancy **Anjou Pears** will wrap up for the season in late May. There is still some top-grade US#1 fruit available but that too will dry up in June and have a short gap where we will possibly have some imports before new crop California gets started in July.

Chilean **Asian Pears** are in good supply. Import **Bartlett Pears** are in excellent supply.

Washington **Bosc Pears** are going to wrap up for the season over the next few weeks and we should transition to imports without an issue.

Comice Pears have transitioned from Washington into nice Chilean imports, with lower markets.

OTHER STORIES

- **Cucumbers** have started to be harvested in Georgia. Warmer, consistent temperatures are really speeding up items on the East Coast.

- Import **Black** and **Red Plums** continue in sporadic supply and are expected to continue to be sporadically available right up to the domestic crop hopefully by the end of May.



CV RHUBARB

Pacific Northwest **Rhubarb** is in good steady supply.



CV TROPICALS

GOOD NEWS! **Mangos** will be promotable for the rest of May, especially on 10 and 12ct sizing. Promotional opportunities will be available for Memorial Day. Larger fruit volumes are down.

Hass Avocado momentum remained strong for the beginning of May. Fruit volume will be good for the middle of the month. While pricing is projected to remain steady for now, look for border pricing to increase as we progress toward the end of the month. Colombian fruit has started from some suppliers offering a value option for those who may be interested.

Mingolo Mangos from the Dominican Republic will be limited for the middle of May.

Pineapple supplies are rebounding for the middle of May. Pricing is still a bit higher. Quality has been good.

PinkGlow Pineapples from Del Monte will be available in very limited supplies for the month of May!

- **Pomegranates** are available from Peru and Chile. Single layer boxes will be available for the month of May. **Pomegranate Arils** from Sun Belle will be done around the middle of May for the season from Peru. The I Love Pomegranates label will be available until their season is complete.



ASPARAGUS AND BRUSSELS SPROUTS DISPLAY CONTEST WINNERS 2024



KIMBERTON WHOLE FOODS
Collegetown, PA



HENNING'S SUPERMARKET
Harleysville, PA



CITY MARKET
Burlington, VT



COMMON MARKET 7TH STREET
Frederick, MD



HEALTHY LIVING MARKET
Saratoga Springs, NY



MONADNOCK FOOD CO-OP
Keene, NH



PHONE: 1.800.422.8384

www.fsproduce.com



THE LITTLE POTATO COMPANY SUMMER GRILLING DISPLAY CONTEST

MAY 19 - JULY 7, 2024



Spring is in the air and with warmer temperatures outside people begin to think more about grilling and backyard barbeques!

This year, The Little Potato Company and Four Seasons Produce are teaming up for a display contest focused on these LPC's grilling favorites. These displays should create some excitement and have a little "WOW" factor to entice customers to make a purchase. Our contest will kick off right before Memorial Day and will run through the 4th of July, capturing many of the early summer holidays and family/backyard gatherings.

DISPLAY CONTEST CRITERIA:

- Build a display that has a grilling/summer BBQ theme.
- All displays should include 1.5lb bags, grilling, and microwavable trays.
- Displays must incorporate at least 8 LPC SKU's between the bags and trays.
- All products must be purchased from Four Seasons Produce with a minimum of 10 cases purchased during the promotional period. We encourage all displays to include the 1.5lb bag pallet modules along with the grilling and microwavable shippers.
- Displays should be kept up for at least 2 weeks.
- Use of Social Media is encouraged.
- All pictures need to be submitted to contests@fsproduce.com no later than July 10, 2024.



DISPLAY CONTEST PRIZES:

1st Place - \$300 Visa Gift Card

2nd Place - \$250 Visa Gift Card

3rd Place - \$200 Visa Gift Card

4th Place - \$150 Visa Gift Card



PHONE: 1.800.422.8384

| www.fsproduce.com



THE LITTLE POTATO COMPANY SUMMER GRILLING DISPLAY CONTEST

MAY 19 - JULY 7, 2024



PRODUCT CODES:

- 231241 - CV Potatoes Variety Shipper 36/1lb Little Potato Co Grill
- 212058 - CV Potatoes Variety Shipper 36/1lb Little Potato Co Micro
- 226121 - CV Potatoes Variety Shipper 192/1.5lb Little Potato Co
- 212052 - CV Potatoes Onion & Chive 6/1lb Little Potato Co Grill
- 212054 - CV Potatoes Rst Pepper & Onion 6/1lb Little Potato Co Grill
- 212051 - CV Potatoes Garlic & Herb 6/1lb Little Potato Co Grill
- 212056 - CV Potatoes Garlic & Parsley 6/1lb Little Potato Co Micro
- 222885 - CV Potatoes Lemon & Garden Herb 6/1lb Little Potato Co Micro
- 229351 - CV Potatoes Little Smoked Salt 6/1lb Little Potato Co Micro
- 229352 - CV Potatoes Rst Gar Rosem Thyme 6/1lb Little Potato Co Micro
- 212055 - CV Potatoes Little Savory Herb 6/1lb Little Potato Co Micro
- 213073 - CV Potatoes Little Reds 16/1.5lb Little Potato Co
- 213062 - CV Potatoes Little Yellows 16/1.5lb Little Potato Co
- 213075 - CV Potatoes Little Duos 16/1.5lb Little Potato Co
- 213076 - CV Potatoes Little Fingerlings 16/1.5lb Little Potato Co
- 237130 - CV Potatoes Little Purely Purple 8/1.5lb Little Potato Co
- 213074 - CV Potatoes Little Trio 16/1.5lb Little Potato Co
- 218975 - POS Display Bin 1ea Little Potato Co



212052



212054



212051



212056



222885



229351



229352



212055



213073



213062



213075



213076



237130



213074



231241



212058



226121



PHONE: 1.800.422.8384

| www.fsproduce.com





DRIED MANGO SLICES

Connect with us

✉ info@CrespoOrganic.com

SUCCULENT, RIPE SILKY-SMOOTH
 KENT, KEITT & ATAULFO MANGOES ARE DRIED
 INTO SUCCULENT & CHEWY PORTABLE MANGO
 SNACKS IN OUR HOMETOWN OF EL ROSARIO,
 SINALOA, MEXICO



**OUR DRIED MANGOES ARE PACKED INTO
 RESEALABLE ZIP TOP
 POUCHES FOR OPTIMAL FRESHNESS**

Suggested **WAREHOUSE** Storage Temp 45° - 55° F
 Suggested **RETAIL** Storage Temp (Ambient) 60° - 70° F

BEST BY DATE 1 Year from Pack Date

**best by dates are stamped on each individual pouch and master box*

Standing or
HOOK
 TOP
 display



AVAILABLE NOW!

CODE	DESCRIPTION	PK/SZ	UPC
239401	OG Dried Mangoes	20/4oz Crespo	0081001770085
239402	OG Dried Mangoes Ataulfo	20/4oz Crespo	0081001770086
239403	OG Dried Mangoes	15/1lb Crespo	0081001770107
239404	OG Dried Mangoes Ataulfo	15/1lb Crespo	0081001770108

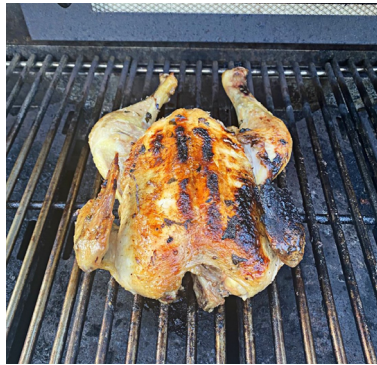


PHONE: 800.422.8384 | FSPRODUCE.COM





COMING SOON TO FOUR SEASONS



LaBelle Patrimoine™ chickens are a true heritage breed, raised on small Central Pennsylvania family farms by farmers who are stewards of the land and committed to regenerative practices.

What does Grown As Promised® mean? It means we are transparent about how our chickens are raised: Pasture-raised with access to shade, fed an all-vegetarian diet, given no antibiotics (ever), and are slow grown for 60+ days, which results in more flavor and healthier chickens.

Our chickens are also GAP 4 rated and are one of only three suppliers raising chickens to the Better Chicken Project Standards.



- ✓ HERITAGE BREED
- ✓ PASTURE-RAISED
- ✓ AIR-CHILLED
- ✓ NO ANTIBIOTICS EVER



COMING SOON TO FOUR SEASONS



CODE	DESCRIPTION	PK/SZ	UPC
239184	OG Eggs Brown LG NAE	15/1 dz Labelle Patrimoine	8-60004-51290-5
239173	CV Chicken BSL Breast NAE	10/.75lb Labelle Patrimoine	Catch Weight
239169	CV Chicken BSL Thighs NAE	10/1lb Labelle Patrimoine	Catch Weight
239171	CV Chicken Drumsticks NAE	10/1lb Labelle Patrimoine	Catch Weight
239164	CV Chicken Ground NAE	10/1lb Labelle Patrimoine	Catch Weight
239170	CV Chicken Legs NAE	10/1.1lb Labelle Patrimoine	Catch Weight
239165	CV Chicken Spatchcock NAE	6/3lb Labelle Patrimoine	Catch Weight
239167	CV Chicken Split NAE	10/1.88lb Labelle Patrimoine	Catch Weight
239174	CV Chicken Whole NAE	10/3.75lb Labelle Patrimoine	Catch Weight
239410	CV Chicken Whole Pastured WOG	10/3.5-4lb Labelle Patrimoine	Catch Weight
239168	CV Chicken Wing Whole NAE	10/1lb Labelle Patrimoine	Catch Weight

THOMAS FARMS

COMING SOON TO FOUR SEASONS

ABUNDANT PASTURES, ABUNDANT CARE

We believe that animals should be raised with compassion and respect, just as nature intended. All of our animals are raised freely and humanely on abundant, grassy pastures by family farmers who share the same high ethical standards that we do. Guided by our principles of kindness for animals, people and planet, we work each day to put more care in every acre.



- All Natural/ABF/Never Ever
- EU Qualified Angus Pure[®] Cattle
- Humanely Raised - Covered Pens/Cattle Comfort
- USDA Choice & Prime Equivalent Maturity and Marbling Score Grading



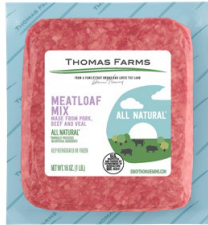
PHONE: 1.800.422.8384

| www.fsproduce.com



THOMAS FARMS

COMING SOON TO FOUR SEASONS



239081



239060



239059



239085



239086



239087



239088



239057



239054



239055



239056



239416



239415



239414

CODE	DESCRIPTION	PK/SZ	UPC
239081	CV Meatloaf Ground	12/1 lb Thomas Farms	647086001950
239060	CV Veal Cutlet	6/1.25-1.75 lb Thomas Farms	Catch Weight
239059	CV Veal Ground	12/1 lb Thomas Farms	647086001530
239085	OG Beef Ground 85/15 Grass Fed	12/1 Thomas Farms	647086001257
239086	OG Beef Ground 93/7 Grass Fed	6/1 lb Thomas Farms	647086001783
239087	OG Beef Ribeye Steak Grass Fed	8/8 oz Thomas Farms	647086042274
239088	OG Beef Strip Steak Grass Fed	8/8 oz Thomas Farms	647086042267
239057	CV Bison Ground	12/1 Thomas Farms	647086011348
239054	CV Lamb Ground Pasture Fed	6/1 lb Thomas Farms	647086001349
239055	CV Lamb Loin Chops Pasture Fed	6/1-1.5 lb Thomas Farms	Catch Weight
239056	CV Lamb Stew Pasture Fed	6/1-1.5 lb Thomas Farms	Catch Weight
239416	CV Beef NY Strip Wagyu	4/.75-1 lb Thomas Farms	Catch Weight
239415	CV Beef Ribeye Wagyu	4/.75-1 lb Thomas Farms	Catch Weight
239414	CV Lamb Rib Rack Frenched	12/2-2.5 lb Thomas Farms	Catch Weight