



PACK SIZE CHANGE

✓ Organic ✓ Less Sugar ✓ Lactose Free ✓ Larger Size ✓ Trusted Brand



OLD CODE	CODE	DESCRIPTION	PK/SZ	OLD UPC	UPC
231877	239274	OG Creamer Vanilla Lac Free	6/32oz	0-93966-00870-8	0-93966-01040-4
231879	239275	OG Creamer SweetCream LacFree	6/32oz	0-93966-00872-2	0-93966-01041-1

DELIVERY STARTING 5/21



PHONE: 1.800.422.8384

| www.fsproduce.com





NEW

AT FOUR SEASONS



TAYLOR FARMS

CODE	DESCRIPTION	PK/SZ	UPC
239099	CV Broccoli Caesar Roast	6/10.65 oz Taylor Farms	0-30223-06193-9
239100	CV Cauli/Broc Rice Cheesy Pesto	6/9.62 oz Taylor Farms Saute	0-30223-06197-7
239101	CV Cauliflower Mac & Cheese	6/11.13 oz Taylor Farms Roast	0-30223-06192-2
239102	CV Brussels Spicy Maple	6/12 oz Taylor Farms Air Fryer	0-30223-06195-3

EARTHBOUND FARM

CODE	DESCRIPTION	PK/SZ	UPC
239103	OG Celery Bites	6/14 oz Earthbound	0-32601-95422-2
239121	OG Salad Power Greens	6/10 oz Earthbound Clamshell	0-32601-90062-5
239123	OG Salad Sweet Mix	6/10 oz Earthbound Clamshell	0-32601-95459-8
239124	OG Salad Arugula Wild Red	8/4 oz Earthbound Clamshell	0-32601-95438-3
239125	OG Salad Creamy Caesar	8/4.47 oz Earthbound Kit	0-32601-95441-3
239126	OG Salad Golden Balsamic	8/4.85 oz Earthbound Kit	0-32601-95439-0
239127	OG Salad Apple Cider Crunch	8/4.75 oz Earthbound Kit	0-32601-95443-7
239132	OG Salad Chipotle Ranch	8/4.85 oz Earthbound Kit	0-32601-95440-6

DELIVERY STARTING 5/20



PHONE: 1.800.422.8384

| www.fsproduce.com



**Love™
BEETS**

OUR CLASSIC BEET
The Classic Beet Salad
kit features a tried-
and-true classic com-
bination: Beets, goat
cheese, walnuts, and
balsamic vinaigrette!

The Classic Beet Salad kit can
be enjoyed with or without
greens and makes the perfect
quick lunch or dinner side —
or top with your favorite pro-
tein to turn it into an entrée!



CLASSIC BEET SALAD KIT

NEW



**THIS KIT
INCLUDES:**

**10.6 OZ
PACK OF**



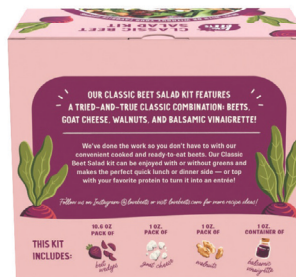
**1 OZ.
PACK OF**



**1 OZ.
PACK OF**



**1 OZ.
CONTAINER OF**



CODE

236976

DESCRIPTION

CV Classic Beet Salad Kit

PK/SZ

6/13.6oz

UPC

8-58760-00655-4

AVAILABLE NOW!



PHONE: 1.800.422.8384

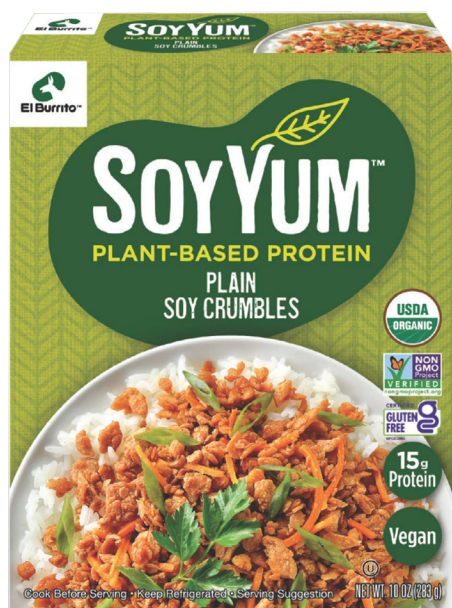
| www.fsproduce.com





House Foods

NEW AT FOUR SEASONS



CODE	DESCRIPTION	PK/SZ	UPC
239262	OG Tofu Super Firm Cubed	6/8oz House Foods	0-76371-01241-6
239263	OG Tofu Super Firm Grilled	6/10oz House Foods	0-76341-01243-0
239264	OG Soy Crumbles Plain	12/10oz House Foods	0-36998-00671-7
239265	OG Soy Crumbles Chorizo Flavor	12/10oz House Foods	0-36998-00673-1
239266	OG Soy Crumbles Beef Flavor	12/10oz House Foods	0-36998-00672-4

AVAILABLE NOW!



PHONE: 1.800.422.8384

| www.fsproduce.com



THOMAS FARMS

NEW AT FOUR SEASONS

ABUNDANT PASTURES, ABUNDANT CARE

We believe that animals should be raised with compassion and respect, just as nature intended. All of our animals are raised freely and humanely on abundant, grassy pastures by family farmers who share the same high ethical standards that we do. Guided by our principles of kindness for animals, people and planet, we work each day to put more care in every acre.



- All Natural/ABF/Never Ever
- EU Qualified Angus Pure® Cattle
- Humanely Raised - Covered Pens/Cattle Comfort
- USDA Choice & Prime Equivalent Maturity and Marbling Score Grading



PHONE: 1.800.422.8384

| www.fsproduce.com



THOMAS FARMS

NEW AT FOUR SEASONS



239081



239060



239059



239085



239086



239087



239088



239057



239054



239055



239056



239416



239415

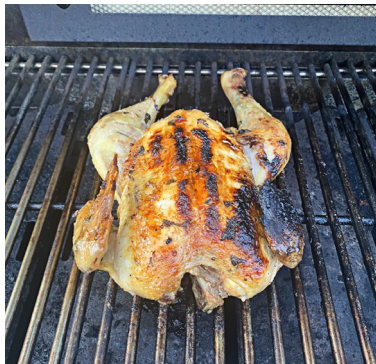


239414

CODE	DESCRIPTION	PK/SZ	UPC
239081	CV Meatloaf Ground	12/1 lb Thomas Farms	647086001950
239060	CV Veal Cutlet	6/1.25-1.75 lb Thomas Farms	Catch Weight
239059	CV Veal Ground	12/1 lb Thomas Farms	647086001530
239085	OG Beef Ground 85/15 Grass Fed	12/1 Thomas Farms	647086001257
239086	OG Beef Ground 93/7 Grass Fed	6/1 lb Thomas Farms	647086001783
239087	OG Beef Ribeye Steak Grass Fed	8/8 oz Thomas Farms	647086042274
239088	OG Beef Strip Steak Grass Fed	8/8 oz Thomas Farms	647086042267
239057	CV Bison Ground	12/1 Thomas Farms	647086011348
239054	CV Lamb Ground Pasture Fed	6/1 lb Thomas Farms	647086001349
239055	CV Lamb Loin Chops Pasture Fed	6/1-1.5 lb Thomas Farms	Catch Weight
239056	CV Lamb Stew Pasture Fed	6/1-1.5 lb Thomas Farms	Catch Weight
239416	CV Beef NY Strip Wagyu	4/.75-1 lb Thomas Farms	Catch Weight
239415	CV Beef Ribeye Wagyu	4/.75-1 lb Thomas Farms	Catch Weight
239414	CV Lamb Rib Rack Frenched	12/2-2.5 lb Thomas Farms	Catch Weight



NEW TO FOUR SEASONS



LaBelle Patrimoine™ chickens are a true heritage breed, raised on small Central Pennsylvania family farms by farmers who are stewards of the land and committed to regenerative practices.

What does Grown As Promised® mean? It means we are transparent about how our chickens are raised: Pasture-raised with access to shade, fed an all-vegetarian diet, given no antibiotics (ever), and are slow grown for 60+ days, which results in more flavor and healthier chickens.

Our chickens are also GAP 4 rated and are one of only three suppliers raising chickens to the Better Chicken Project Standards.



HERITAGE BREED



PASTURE-RAISED



AIR-CHILLED



NO ANTIBIOTICS EVER



NEW TO FOUR SEASONS



CODE	DESCRIPTION	PK/SZ	UPC
239184	OG Eggs Brown LG NAE	15/1dz Labelle Patrimoine	8-60004-51290-5
239173	CV Chicken BSL Breast NAE	10/.75lb Labelle Patrimoine	Catch Weight
239169	CV Chicken BSL Thighs NAE	10/1lb Labelle Patrimoine	Catch Weight
239171	CV Chicken Drumsticks NAE	10/1lb Labelle Patrimoine	Catch Weight
239164	CV Chicken Ground NAE	10/1lb Labelle Patrimoine	Catch Weight
239165	CV Chicken Spatchcock NAE	6/3lb Labelle Patrimoine	Catch Weight
239167	CV Chicken Split NAE	10/1.88lb Labelle Patrimoine	Catch Weight
239174	CV Chicken Whole NAE	10/3.75lb Labelle Patrimoine	Catch Weight
239410	CV Chicken Whole Pastured WOG	10/3.5-4lb Labelle Patrimoine	Catch Weight
239168	CV Chicken Wing Whole NAE	10/1lb Labelle Patrimoine	Catch Weight