

ORGANIC MARKET NEWS

MAY 28 - JUNE 4, 2021

PEAK SEASON ORGANIC BERRIES



June should be a good month to sell **Organic Berries** with nice availability and reasonable pricing.

Organic Blackberries continue in excellent supply, with the majority of fruit coming out of Mexico with a lot of California fruit mixed in. We expect good, steady supplies barring any weather events.

Organic Blueberries continue in excellent supply out of California and quality is excellent. We expect to see local New Jersey **Organic Blueberries** towards the middle of June, and then an excellent crop out of the Pacific Northwest. Headed into July, there may be some exciting pre-book opportunities on 18oz big packs.

Organic Raspberries continue in excellent supply from Driscoll's. We should see some other brands of fruit back in when prices align after Memorial Day.

Organic Strawberries are in promotable volume from Driscoll's. We should see another improvement in quality by the first week of June as we transition from Santa Maria, CA fruit to new district Watsonville, CA fruit.



RISING INPUT COSTS

ALERT! Value-Added Product line producers are feeling the triple pinch:

1. Higher freight rates
2. More expensive inputs (pallets, cardboard, plastic, fuel)
3. Labor shortages in the fields and production facilities

For late May and June, the following suppliers have announced the need for price increases:

- Earthbound Farms Salads & Cut Veg
- Olivia's/State Garden Salads
- Jacob's Farms Herb Packs
- GT's Kombucha

A number of brands are having trouble with fill rates due to labor shortages. For example, **Mushroom King Organic Heirloom Mushrooms** is experiencing significant shortages due to this issue.



OG LOCAL GREENS

Organic Local Season is here!

As Lady Moon closes out their Georgia **Organic Greens** and **Lettuces**, they will make a seamless transition to their Chambersburg, Pennsylvania area farm!

Look for locally grown **Organic Kales, Lettuces**, and other **Greens** in early June from Lady Moon, as well as **Organic Arugula, Bok Choys, Radishes, Spinach**, and **Beets** from other local vendors for a local wet veg set!

Locally grown **Organic Romaine Hearts** from Pennsylvania and **Organic Iceberg Lettuce** from New Jersey will be available in early June.



OG TROPICALS

Organic Fair Trade Haitian Mangos are full steam ahead for the month of June.

Organic Tommy Atkins Mangos from Mexico continued to tighten up as fruit continues to transition north to new growing regions. Cooler weather has held fruit size back just a bit in the transition which will lead to a higher portion of 12sz fruit in early to mid-June.

Organic Pineapple are in great supply as we head into June! Look for opportunities to promote!

Organic Hass Avocados will be in steady supply as we kick off June. California and Mexico are both shipping and demand continues to be very strong.

Our **Organic Fair Trade Hass Avocados** from Mexico will be done at the beginning of June. We will be bringing some Fair Trade fruit from Peru as an alternative to be able to continue to support our valued Fair Trade efforts. Look for this fruit the 2nd week of June.



OG GRAPES

Organic Grape season has begun out of the Sonora, Mexico desert growing region.

Organic Green Grapes will be in light supply as the season begins. The good news is that many of the earlier arrivals will be Prime variety, which are bigger and sweeter than the traditional first of the season Perlettes.

Organic Red Grapes will be Flame variety, which will be very sweet and crunchy, but small in size.



OG STONE FRUIT

California **Organic Peaches** and **Nectarines** will come into good supply for June. Quality so far has been very nice from Homegrown Organics and Wawona Sweet2Eat brands.

Organic White Flesh Peaches are just starting to come into stock. **Organic Donut Peaches** will gap for a week or so until the next variety is harvested in early June.

South Carolina **Organic Yellow** and **White Flesh Peaches** will be available in limited quantities during June as well.

The first **Organic Red Plums** and **Flavorosa Pluots** are set to arrive on 6/3.



OG CELERY

NOTE: **Organic Celery** remains limited in availability as June begins. Pricing will remain elevated in early June with limited availability, mediocre quality, and expensive freight driving costs up. These conditions are expected to remain until mid-June.



OG WATERMELONS

Organic Seedless Watermelons remain steady out of Mexico. Quality has been very nice. We might see a gap in June as Mexico finishes up and California begins harvests.

Organic Mini Seedless Watermelons will be very promotable out of Mexico. Harvests continue to flush, and supplies are strong with excellent quality.



OG BROCCOLI

Organic Broccoli availability will remain steady after Memorial Day. Supplies from the East Coast are expected to become less abundant in early June.

Pricing from both East Coast and California shippers are subsequently expected to rise. Quality from both growing regions have been outstanding!



OG CHERRIES & APRICOTS

Organic Cherries should now be in good, steady supply out of California for June, and we expect a clean transition to an excellent crop out of Washington. Prices are on the high side now, but should begin to ease throughout early June.

Throughout the season we will be trying to keep a jumbo, large, and medium sizes available to help hit different price points, as well as a 16/1lb clamshell for a packaged option.

California growers are now into good volumes of **Organic Apricots**, with the Coral and Trinidad varieties.



OG CITRUS

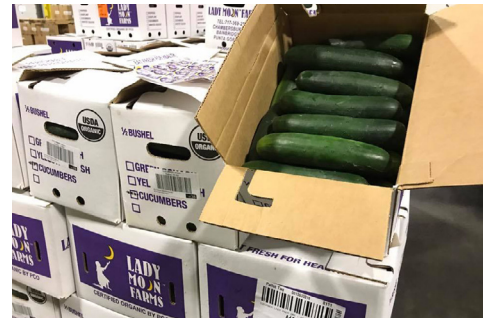
ALERT! **Organic Lemons** continue in very limited supply as California is short on water and volume, and the Mexican crop was severely hampered by weather early in the season, coupled with extremely strong demand. We expect light supplies and expensive prices until the end of August.

ALERT! **Organic Grapefruit** are finished out of Mexico and new crop California product is very limited. Expect some small gaps in supply and stronger markets as we finish May and early June.



OG APPLES

Organic Apples from New Zealand are starting to come into season! **Organic Braeburn Apples** are now available. Soon to follow are **Organic Diva**, **Gala**, and **Granny Smith Apples**, and will all be available for early June.



OG CUCUMBERS

Lady Moon Farm's Georgia crop is beginning to yield stronger harvests in early June. Expect to see stable supplies through mid-June and superb quality! **Organic Cucumbers** remain plentiful and aggressively priced from Mexico with excellent quality.



OG CABBAGE

Local **Organic Green Cabbage** is expected to start very limited harvests from Ephrata, PA in late May. Expect volumes to increase in early June, and **Organic Red Cabbage** to begin shortly after.

Organic Napa and **Savoy Cabbage** availability returns in late May. Expect supplies to become more stable. East Coast **Organic Napa Cabbage** from North Carolina is available.



OG CAULIFLOWER

Organic Cauliflower availability and pricing remain stable to begin June. Early June will mark the start of East Coast **Organic Cauliflower** season, so expect some relief in pricing and availability to be strong!

Organic Romanesco will be available for early June.



OG ASPARAGUS

Organic Asparagus will remain available for the beginning of June. New York harvests are slowing down as the weather has been very warm.

We will be offering new crop Michigan product as well, and quality has been excellent.



OG ONIONS & POTATOES

We are fully into new crop California desert grown **Organic Onions**. We will see the start of central California grown product the first week of June, which should bring us some really nice quality and much more consistent supply.

Organic Russet Potatoes are expected to start out of California in early to mid-June. We have seen some improved quality out of Colorado on old crop potatoes that are still going strong and will carry straight into new crop without any gaps in supply.

Organic Red and **Gold Potatoes** are in better supply, and it seems the further we move into the California growing season.



OG TOMATOES

Organic Beefsteak and **Roma Tomato** prices remain steady out of Canadian greenhouses. Quality has been excellent.

Organic Cluster Tomatoes will be promotable from Canada. Harvests continue to flush, and quality is excellent.

Organic Grape Tomatoes from Lady Moon Farms will be available with limited quantities. Their Georgia production has just started, and volume is light. We will also be offering hothouse grown Canadian **Organic Grape Tomatoes** to help keep supplies steady until Lady Moon is back in full production.

Organic Heirloom Tomatoes out of Mexico continue to be available and quality is excellent.



OG PEPPERS

Organic Red, Yellow, and Orange Bell Peppers from Canada and Holland remain unchanged as June begins. Quality is expected to remain outstanding from both regions.

Contact your sales rep about our new 2pk **Organic Bell Pepper** program to add an excellent grab and go option for customers!

Organic Green Peppers from Georgia continue in steady harvests and excellent quality. Pricing is expected to remain elevated due to limited supplies industry-wide in late May.

Organic Mini Peppers remain plentiful and excellent in quality.

OTHER STORIES

- **Organic Lychee** from Florida will be available during the month of June from Florida!
- **Organic SunGold Kiwifruit** are in full swing to start June.
- The first California **Organic Cantaloupes** will come into season during early June with mostly 12ct fruit and very little 9ct fruit to start. **Organic Honeydew** continue to be plentiful from Mexico.

- **Organic Brussels Sprouts** from Mexico continue to be flush with availability, however mid-June is expected to experience less availability and pricing is expected to rise. Pricing and availability will remain steady for early June.
- **Organic Zucchini** from Lady Moon Farms in Georgia is now in full production. Look for great quality and steady availability, with promotional opportunities in early June!

- **Organic Yellow Squash** from South Carolina has been a little slow to begin the season and is causing some gaps, but as June begins, supplies are expected to become stable! Pricing should improve throughout the month as availability improves.
- **Organic Eggplant** from Lady Moon Farms in Florida has concluded, but they will begin harvesting their Georgia crop as June kicks off. Expect to see a small gap of Lady Moon supplies and Mexican product to fill the void. Mid-June is when we should see steady supplies from Lady Moon return.



Driscoll's Berry Bonanza Display Contest

May 17 - June 14, 2021

Want to show off some creativity and drive some serious volume at the same time? And while we are at it, let's throw a little fun, some bragging rights, with a little incentive behind it! If this sounds great to you, then join in on the fun with our second annual Driscoll's Berry Display Contest!

Four Seasons Produce and Driscoll's have teamed up to bring you a display contest with massive sales potential! Berries are one of the biggest category sales drivers in your department, and with warmer weather ahead, your customers are sure to hit these displays hard. As we head toward the Memorial Day holiday and beyond, now is the perfect time to promote this entire category, so let's build a Berry Patch your customers are sure to "pick" through!

CONTEST CRITERIA:

- Build a "berry" memorable display of Driscoll's berries that will wow our judges!
- All fruit must be purchased through Four Seasons Produce.
- You must have at least three (3) varieties of berries in your displays. Varieties that will be available are Strawberries, Blackberries, Raspberries, and Blueberries in both organic and conventional. We will have different pack sizes available.
- The Driscoll's brand must be highlighted in your displays with either the graphic boxes or point of sale signs hung on your displays (or both!) For Point of Sale signs, contact your Four Seasons rep.
- Email all photos to Steph Mayer (stephf@fsproduce.com) by June 17, 2021.



**The use of social media is not required but strongly suggested.

PRIZES:

BEST OVERALL DISPLAY (BERRY BALLER)

GRAND PRIZE WINNER
\$1,250

(Display will be judged on overall eye appeal, use of the Driscoll's brand within the display, use of berry related tie ins, use of social media, and berry promotions in the store.)

LARGEST DISPLAY (BERRY BOOMER)

1ST - \$400
2ND - \$300
3RD - \$200

BEST DESIGN (BERRY VISIONARY)

1ST - \$400
2ND - \$300
3RD - \$200

BEST ORGANIC (BERRY BEES)

1ST - \$400
2ND - \$300
3RD - \$200



PHONE: 1.800.422.8384

www.fsproduce.com



LOCAL LIST

ORGANIC

FLAIM FARMS - VINELAND, NJ

- 40309 - OG Arugula 12 ct
- 40488 - OG Beets Red Bunched 12 ct
- 40513 - OG Bok Choy Baby PREM 20 lb
- 40684 - OG Chard Green 12 ct
- 40682 - OG Chard Rainbow 12 ct
- 40685 - OG Chard Red 12 ct
- 40650 - OG Dandelion 12 ct
- 40671 - OG Greens Collard 12 ct
- 40672 - OG Greens Kale 12 ct
- 40889 - OG Greens Kale Lacinato 12 ct
- 40647 - OG Herb Cilantro 15 ct
- 40209 - OG Herb Dill 12 ct
- 40210 - OG Herb Dill 24 ct
- 219525 - OG Herb Mint 12 ct
- 40314 - OG Lettuce Green Leaf 12 ct
- 40313 - OG Lettuce Red Leaf 12 ct
- 41181 - OG Lettuce Romaine 12 ct
- 40726 - OG Parsley Curly 15 ct
- 40723 - OG Parsley Curly PREM 30 ct
- 40729 - OG Parsley Flat Leaf (Italian) 15 ct
- 40724 - OG Parsley Flat Leaf PREM 30 ct (Italian)
- 40180 - OG Radishes Red 12 ct Bunch
- 40864 - OG Radishes Red Bunched PREM 24 ct
- 40897 - OG Spinach Bunched 12 ct
- 40900 - OG Spinach Bunched 24 ct

JOSEPH WEAVER - LANCASTER, PA

- **MORE ARRIVING AROUND 6/1**
- 40548 OG Cabbage Green PREM 45 lb

LADY MOON FARMS - CHAMBERSBURG, PA

- **ALL ARRIVING AROUND 6/4**
- 40680 - OG Chard Rainbow PREM 24 ct
- 40472 - OG Greens Kale Lacinato PREM 24 ct
- 41150 - OG Lettuce Butter Green 24 ct
- 41182 - OG Lettuce Romaine PREM 24 ct

LANCASTER FARM FRESH COOP - LANCASTER, PA

- 40309 - OG Arugula 12 ct
- 40513 - OG Bok Choy Baby PREM 20 lb
- 40667 - OG Chard Red PREM 24 ct
- 40650 - OG Dandelion 12 ct
- 41112 - OG Escarole 24 ct
- 40670 - OG Greens Collard 24 ct
- 40675 - OG Greens Kale 24 ct
- 40676 - OG Greens Kale Lacinato 24 ct
- 40677 - OG Greens Mustard 24 ct
- 40640 - OG Herb Cilantro 30 ct
- 41155 - OG Lettuce Butter Red 24 ct
- 41160 - OG Lettuce Green Leaf 24 ct
- 41165 - OG Lettuce Red Leaf 24 ct
- 41180 - OG Lettuce Romaine 24 ct
- 41185 - OG Lettuce Romaine Hearts 12/3 ct
- 41175 - OG Lettuce Romaine Red 24 ct
- 40724 - OG Parsley Flat Leaf PREM 30 ct (Italian)
- 40900 - OG Spinach Bunched 24 ct
- 40617 - OG Turnips White Bunched 12 ct

EASTERN FRESH - CEDARVILLE, NJ

- 40325 - OG Asparagus 11 lb
- 41163 - OG Lettuce Iceberg Cello 12ct

PEDERSEN FARMS - SENECA CASTLE, NY

- 40324 - OG Asparagus 28 lb



CONVENTIONAL



FLAIM FARMS - VINELAND, NJ

- 205 - CV Arugula 24 ct
- 550 - CV Beets Red Bunched 12 ct
- 591 - CV Bok Choy 30 lb
- 592 - CV Bok Choy Baby Shanghai 30 lb
- 1362 - CV Chard Green 12 ct
- 1355 - CV Chard Rainbow 12 ct
- 1368 - CV Chard Red 12 ct
- 1170 - CV Dandelion Bunch 12 ct
- 2876 - CV Endive (Chicory) 24 ct
- 2900 - CV Escarole 24 ct
- 1315 - CV Greens Kale NJ 18 lb
- 1308 - CV Greens Collard NJ 18 lb
- 455 - CV Herb Basil 15 ct
- 1200 - CV Herb Dill 24 ct
- 1510 - CV Herb Mint 12 ct Box

- 1462 - CV Kohlrabi Green 12 ct
- 3050 - CV Lettuce Green Leaf NJ 20 lb 24 ct
- 3065 - CV Lettuce Red Leaf NJ 20 lb 24 ct
- 3097 - CV Lettuce Romaine NJ 35 lb 24 ct
- 3130 - CV Radishes Red Bunched 24 ct
- 2205 - CV Spinach Bunched 24 ct

NARDELLI LAKE VIEW FARMS - CEDARVILLE, NJ

- 357 - CV Asparagus NJ 28 lb
- 550 - CV Beets Red Bunched 12 ct
- 591 - CV Bok Choy 30 lb
- 592 - CV Bok Choy Baby Shanghai 30 lb
- 1670 - CV Cabbage Napa 30 lb
- 795 - CV Cabbage Savoy 30 lb
- 1362 - CV Chard Green 12 ct
- 1368 - CV Chard Red 12 ct
- 1308 - CV Greens Collard NJ 18 lb
- 1315 - CV Greens Kale NJ 18 lb
- 1345 - CV Greens Mustard 12 ct
- 1200 - CV Herb Dill 24 ct
- 1475 - CV Leeks Bunched 12 ct
- 3130 - CV Radishes Red Bunched 24 ct
- 2205 - CV Spinach Bunched 24 ct

EASTERN FRESH - CEDARVILLE, NJ

- 357 - CV Asparagus NJ 28 lb

FIFER ORCHARDS - DOVER, DE

- 358 - CV Asparagus Std 28 lb

Expansion Announcement



“Our customers are growing and so are we!” The Four Seasons Family of Companies has seen consistent double-digit growth over the past several years, and many of those customer partnerships have much bigger futures ahead.

A major distribution center expansion project is underway at the Four Seasons Family of Companies, 400 Wabash Road in Ephrata, PA. A 131,000 square foot addition to the existing state-of-the-art warehouse will include a second dock, more multi-temperature cold storage rooms, plus more ripening rooms for bananas and avocados. Construction began this month and is expected to be completed by Spring of 2022.

With the enhanced capability and capacity, Four Seasons Produce, the wholesale distribution business, will be positioned to support the future needs of independent retailers, natural food stores, food co-ops, eCommerce, and other professional buyers in the Mid-Atlantic and Northeast for many years to come. Likewise, Sunrise Logistics, the 3rd party logistics and freight solutions-provider business, and Earth Source, the importing business, will gain additional cold storage space to provide best-in-class supply chain services to growers and shippers of highly perishable products thanks to over ten unique temperature zones, and on-site quality control and ripening experts. Sunrise Logistics cross-dock and storage customers will benefit from even more access to a robust inbound and outbound delivery network with full-load and less-than-load capabilities throughout the East.

Check out our full Press Release at: fsproduce.com/press-may2021



The expansion will include:

- 48,000 square foot multi-temperature receiving dock with 39 added doors
- 72,000 square feet of cold storage with 4-high racking with over 6,000 more pallet spaces
- 10 unique temperature zones suited for fresh produce, plus flex-temp rooms for seasonal peaks
- 28 F degree “chill” zone for the growing organic & natural Meat and Poultry category

The structure is designed with sustainability in mind:

- Four Seasons has a 3,900-panel solar array on its current building. The roof on the expansion is being prepped for future solar panels.
- The company is updating to energy-efficient Lithium-ion electric material handling equipment.
- An EPA-certified electric generator for demand-response and total power back up will be included.
- An energy-efficient refrigeration system will cool the expansion space.
- Full LED lighting with motion sensors will be installed along with a total facility energy monitoring system.

We are so thankful for all of our hard-working associates, loyal customers, and dedicated suppliers!



Wholesale Distributor



Logistics Solutions



Importer



Fleet

NEW PACKAGED ORGANIC OFFERINGS!

OLD 46806 OG Peppers Red 6/2ct Spring Leaf
NEW 228068 OG Peppers Red 12/2pk Divemex
 UPC: 0-66022-00400-6



OLD 46807 OG Peppers Red/Yellow 5/2ct Spring Leaf
NEW 228069 OG Peppers Red 12/2pk Divemex
 UPC: 0-66022-00664-2

OLD 46805 OG Peppers Green 6/2ct Spring Leaf
NEW 228067 OG Peppers Green 12/2pk Divemex
 UPC: 0-66022-00663-5

OLD 49661 OG Tomatoes Roma 6/12 oz Spring Leaf
NEW 228156 OG Tomatoes Roma 12/16 oz Bagged Topline
 UPC: 6-28792-00601-9



OLD 46801 OG Avocados Hass 15/4ct Spring Leaf Bagged
NEW 224026 OG Avocados Hass 15/4ct Calavo
 UPC: 0-33383-40161-4



OLD 49663 OG Asparagus 6/12 oz Spring Leaf
NEW 228139 OG Asparagus 14/12 oz Bagged Alpine
 UPC: 8-15887-01145-8



Memorial Day Schedule

Saturday 5/29:

Normal office and delivery schedule.

Sunday 5/30:

Normal office and delivery schedule.

Monday 5/31:

Normal delivery schedule, office open 8:30am -12:30pm, taking orders for Tuesday 6/1 delivery.

Please contact your sales representative with any questions.

Have a happy and safe Memorial Day!



PHONE: 1.800.422.8384

www.fsproduce.com



FAIR TRADE ORGANIC MANGOES



WHAT IS FAIR TRADE?

Fair Trade is a sustainability certification that provides retailers, traders, and consumers with an assurance that their product comes from farms with the best social and environmental practices, as well as an opportunity to give back to the farming communities that grow their products.

WHY FAIR TRADE?

- **Of the world's poor, most work in farming**
>> 1.6 billion farmers live on less than \$2/day
- **Income Sustainability**
>> Since 1998, Fair Trade producers have earned a total financial benefit of \$440 million
- **Safe Working Conditions**
>> Guarantee of safe working conditions for farmers
- **Well-Being & Stewardship**
>> 700+ social, economic, and environmental protections
- **Advancement of People**
>> Direct mechanism to improve worker livelihoods
- **Protection for the Planet**
>> Focus on environmental stewardship

IMPACTS OF FAIR TRADE ON HAITIAN FARMERS:

Provides essential income to farmers

Creates water wells to give communities access to clean water

Long-term investments in nurseries to increase # of productive mango trees

Improvements to Infrastructure

Helps provide food, pay for school fees, and buy chickens & pigs

By organizing into groups that market their harvest collectively, and by learning how to harvest their own trees, farmers are now earning many times more than they earned by selling their harvests to middlemen.

"Before Fair Trade, we sold to the 'vulture'. Now we get more money. In 2000, we got \$0.12 for a "dozen" mangoes – now we get \$1.00. It's a beautiful program. We like getting the payment in between harvests because it makes people think of the value of the mango tree. We used to cut down mango trees for wood. Now the tree has value."

- Farmer from Kopakam



CONVENTIONAL MARKET NEWS

MAY 28 - JUNE 4, 2021

STONE FRUIT OUTLOOK



Apricots in good supply and sizes are bigger coming out of California. We are in peak season! Family Tree Farms "**Raspberry Apricots**" are slated to arrive at the beginning of June.

Yellow & White Peaches and **Nectarines** from California are ramping up with bigger sizes, with 48/54's going into the 2-layer tray pack and 60's and smaller into the 25 lb volume fill. Color on both have had a nice red blush.

Eastern **Peaches** are in better supply from South Carolina, but we are still waiting for fruit to size up with mainly 2 1/2" and smaller getting packed at the end of May. Arrivals have been very nice with good color.

Plums are still scheduled to start the end of the first week of June, with **Pluots** shortly there after.

California **Dark Sweet Cherries** are in improved volume as the weather has been great. Quality has been coming in nice, and flavor is good as well. There are plenty of big sizes for June, 10.5 row and larger.

Rainier Cherries will arrive east around 6/8.

The Washington **Cherry** season is just around the corner on and is expected to start in a small way in early June. When Washington starts, we should start to see some flex in the markets.

By mid-June we'll be into our peak summer branded California **Stone Fruit** programs. For 2021 we'll be offering premium layer pack **Peaches, Nectarines, and Plums** from Prima.

The **White-flesh fruit, Pluots**, plus and **Specialty Stone Fruit** offerings will be from Family Tree Farms as they progress from variety to variety through August.



CV BERRIES

Blueberries are in good supply from Florida, Georgia, and North Carolina. It seems that volumes should be steady and smooth as we head up the coast into the New Jersey season which should get started in mid-June.

Driscoll's "**Limited Edition Sweetest Batch**" **Blueberries** will be in good supplies for June - jumbo & sweet!

Raspberries and **Blackberries** will be in steady supply as we head into June. Quality has been okay from Mexico, but we should definitely see an improvement in quality as we get into the California crop the week of 6/14.



CV STRAWBERRIES

Strawberries will be in steady supply as we head into the first week of June, but the market had definitely strengthened into Memorial Day.

More volume continues to be harvested in the northern growing areas - Salinas and Watsonville, CA, and the quality has been excellent. Size looks to be really large at this time, and it'll be a great time to promote **Strawberries**.

Ask about 2lb big pack promos!



CV MELONS

Watermelon volumes look to be steady as farms in Northern Florida and Georgia begin harvests. Prices should start to become promotable as June progresses and more fruit is harvested. Quality has been excellent.

Cantaloupes are in good supply in Southern California, and the fruit has been coming in nice with good color and sugar.

NOTE: Eastern **Athena-style Cantaloupes** will gap as Florida is done and Georgia growers won't start picking until early June.



CV GRAPES

Green, Red, and Black Grapes are available from Mexico, and California is shipping **Red Grapes** from the Coachella region.

Size has been an issue with no XLG available to start off the season, only LG, but all the fruit is fresh and crunchy. We will see the market start to come off shipping end.



CV PEPPERS

15lb Red Sweet Pepper prices from California will be promotable during June as harvests begin to flush. Quality has been excellent.

11lb Red, Yellow, and Orange Pepper prices remain steady out of Canada. Orange will be higher as Holland imports come in to bridge the gap out of Canada. **Red** and **Yellow** remain steady, and quality has been very nice on all 3 colors.

Mini Mix Sweet Peppers will be promotable out of Mexico. Quality has been excellent.

Green Pepper prices will start to ease off as production from Georgia and California starts to ramp up. Quality has been very nice.



CV PINEAPPLES

Pineapple will be in great supply heading into June. Get ready to promote 7 and 8ct fruit.

We will also continue to offer various sizing including a 7ct **HoneyGold Pineapple** which offers exceptionally sweet flavor!



CV ASPARAGUS

Asparagus is very promotable right now as numerous regions continue good harvests. Local New Jersey and Delaware growers continue to have excellent supplies and harvests. Quality has been excellent out of NJ and DE as we continue to support local farms.

Michigan crops have begun harvesting. Peru continues to import strong numbers and Mexico is set to start up on new fields in early June.



CV CUCUMBERS

Super Select Cucumbers remain promotable out of Mexico and Georgia. Mexico will begin slowing down in June as harvests finish for the season. Georgia will continue to harvest, and the Carolinas are expected to begin harvests mid-late June.

Euro Seedless Cucumber prices remain higher than average as overall demand remains very high, and yields continue to be low due to cloudy weather. Quality has been nice.

Mini Seedless Cucumber prices will be promotable as new acreage in greenhouses begin harvests. Quality will be excellent.



CV SWEET CORN

Sweet Corn prices will be promotable as the Georgia season is well underway. Quality is excellent and supplies are strong. Tray packs with labels and clear wrap to sticker in store are available as well.



CV MANGOS

Mango harvesting begins to head north, but supplies should be fairly steady through the summer months out of Mexico. Depending on the region fruit may be **Tommy Atkins, Kent**, or even **Haden** varieties!

Ataulfo Honey Mangos from Mexico will be steady for the first week of June.



CV CITRUS

Mandarins are in good supply from California. The market on Halos is strong but independent labels are much cheaper and import fruit is available on the East Coast at substantial savings. Quality on California fruit has been nice.

Many **Navel Orange** growers are cleaning up. Sunkist has plenty of fruit and should go through June and maybe into July.

Cara Cara Oranges will finish, and as we sell through our current inventory we will be done for the season.

Blood Oranges as well could go through June depending on demand.



CV LETTUCES

Local New Jersey **Red Leaf, Green Leaf, and Romaine Lettuces** are now available through July!



CV BROCCOLI

GA **Broccoli** is finishing up, and VA is a little behind. East Coast growers expect to gap first 1-2 weeks of June. CA is experiencing cooler temps which is limiting harvest numbers. Expect volatile markets as we kick off June.



CV POTATOES

NOTE: Due to some restaurants across the country opening up and the size profile of the crop, 50-70ct Idaho **Russet Potatoes** remain very tight.

Bagged Russet Potatoes out of Idaho are in slightly better supply, however landed costs have continued to fluctuate due to tight truck markets.



CV KIWIFRUIT

SunGold Kiwifruit are available with strong supplies in both bulk and clamshell options.



RISING INPUT COSTS

ALERT! Value-Added Product line producers are feeling the triple pinch:

1. Higher freight rates
2. More expensive inputs (pallets, cardboard, plastic, fuel)
3. Labor shortages in the fields and production facilities

For late May and June, the following suppliers have announced or hinted at the need for price increases:

- Dole Salads
- B&W
- Taylor Farms
- Spice World
- Fresh Express
- Del Monte Jarred Fruit

A number of brands are having trouble with fill rates due to labor shortages. For example, **East Coast Fresh Cuts** pre-cut products, **Fresh Express Salads**, and **Ready-Pac** are experiencing significant shortages due to this issue.



CV TOMATOES

Cluster Tomatoes are very promotable. Quality out of Canadian and USA greenhouses continues to be excellent.

Beefsteak Tomato prices increased as demand is strong, and picks have leveled off. Quality remains excellent out of Canada and the USA.

Grape Tomato prices will be high as Florida continues to gap in production. Quality from Canada and Mexico greenhouses has been very nice to bridge the gap.

NOTE: **Campari/Cocktail Tomato** prices will be high as crops slow down. Demand remains very strong leading to the rising markets.

ALERT! Medley Tomato prices really spiked as production slows down. Demand is very strong.



NATURESWEET TOMATOES

NOTE: Our NatureSweet line is experiencing issues with their **Comet** and **Twilight** varieties. New greenhouses are set to start up in early June, but are not started yet.

Constellations could be affected as well, as **Twilights** and **Comets** both help make up the medley pack.

Supplies are expected to improve mid-June but there will be no promotions available through July.



BRIGHT FARMS

ALERT! Bright Farms Greenhouse Salads will be closing their PA facility for about 2 months for repairs on the greenhouse. During this time, they will be shipping product from their VA, NC, and IL facilities.



CV ARTICHOKE

Due to cooler temperatures, smaller sizes of **Artichokes** will be available for the time being.



CV GREEN BEANS

Green Bean prices remain promotable. Florida has finished harvests and new fields in Virginia are set to begin in early June. Georgia continues to harvest as well, and quality has been sharp.