

THE **40** TOP ORGANIC ITEMS

FSPI SUMMER QUARTER:
July - September



1. OG Bananas
2. OG Strawberries
3. OG Blueberries
4. OG Avocados Hass
5. OG Raspberries
6. OG Grapes Red Seedless
7. OG Mangos
8. OG Broccoli
9. OG Tomatoes Grape
10. OG Cucumbers
11. OG Mushrooms Baby Bella / Crimini
12. OG Peaches
13. OG Kale Green
14. OG Grapes Green Seedless
15. OG Peppers Red Bell
16. OG Cantaloupe
17. OG Mushrooms White
18. OG Celery
19. OG Squash Zucchini
20. OG Lemons
21. OG Apples Gala
22. OG Basil
23. OG Cherries, Dark Sweet * 2015 crop to finish early
24. OG Romaine Hearts
25. OG Kale Lacinato
26. OG Mushrooms Portabella
27. OG Carrots Baby 1 lb.
28. OG Oranges Valencia
29. OG Tomatoes Vine Ripe
30. OG Mushrooms Shiitake
31. OG Cauliflower
32. OG Blackberries
33. OG Watermelons
34. OG Nectarines
35. OG Lettuce Romaine
36. OG Pineapples
37. OG Carrots 5 lb.
38. OG Kiwifruit Green
39. OG Sweet Potatoes Garnet
40. OG Figs



****Based on Four Seasons Produce, Inc. historical case volume data from 2014.**

ORGANIC MARKET NEWS



LADY MOON FARMS PENNSYLVANIA OG PRODUCE

Local produce available this week week from Lady Moon Farms in Chambersburg, PA:

- **OG Eggplant**
- **OG Cucumbers**
- **OG Green Peppers**
- **OG Zucchini**
- **OG Yellow Squash**
- **OG Grape Tomatoes**
- **OG Cherry Tomatoes**
- **OG Rainbow Cherry Tomatoes**
- **OG Heirloom Tomatoes**
- **OG Round Tomatoes ***coming soon!***



OG CABBAGE

Organic Green Cabbage is in good supply. Wisconsin and Pennsylvania have significant supplies of **Organic Green Cabbage**. California shippers are reporting tight supplies of **Organic Green Cabbage**.

Organic Red Cabbage is limited out of Pennsylvania, while California is in good supply. Wisconsin shippers are reporting good supplies of **Organic Red Cabbage**.

Organic Napa and **Savoy Cabbage** is very limited out of California.



OG BERRIES

Organic Blackberries are in steady supply this week out of California with pricing expected to remain steady into next week. New Jersey **Organic Blackberries** are also steady this week, but availability is limited.

Pacific Northwest **Organic Blueberries** continue to be in limited supply this week with prices on the rise and availability switching from pints to only shipping 6 oz.

Organic Raspberry numbers are steady on price and volume.

Organic Strawberry supplies should remain steady into next week but then really fall off after that. Expect prices to rise as a result.



OG CUCUMBERS

More volume of **Organic Cucumbers** is now coming out of Lady Moon Farms in Chambersburg, Pennsylvania. This is expected to last for the next few weeks.

Mexico and Canada are still reporting adequate supplies of **Organic Cucumbers**.

Organic Lemon Cucumbers out of California are in limited supply.

Hothouse Organic Cucumbers are in good supply out of the Netherlands (Holland) and Spain.



OG BEETS

Organic Bunch Gold and **Red Beets** are in better supplies out of California and Canada this week, resulting in lower prices. Quality has been very good.



OG GREEN BEANS

Organic Green Beans begin out of Pennsylvania this week. Supplies should be steady through August.

Organic Yellow and **Purple Beans** are in good supply out of California. **Organic Green Beans** are limited out of California.



OG PINEAPPLES

Expect **Organic Pineapples** to remain in tight supply. Prices are up due to low yields out of Costa Rica. This will likely remain the same for the rest of the summer. In addition to lower yields, smaller fruit is most of what is being harvested.



OG POTATOES

Organic Russet Potatoes will be extremely limited for the next two weeks. With the heat in California growing regions, the quality is just not up to par and all growers have finished rather abruptly.

Organic Red and **Yellow Potatoes** are currently in good supply and very nice quality out of Washington. Pricing should remain steady into next week.



OG HASS AVOCADOS

With the arrival of some "Flora Loca" Mexican **Organic Hass Avocados**, Mexican fruit is in good supply for the next few weeks. "Flora Loca" is a term used to describe the late-summer, early-fall Mexican **Organic Hass Avocado** season. The "Flora Loca" season can be somewhat unpredictable, but so far this year it seems like it will be a good one.

Peruvian fruit continues to be available at a heavy advantage in price, making it a great value.



OG KALE

Organic Kale harvests continue out of Lady Moon Farms in Pennsylvania this week, but volume will be down.

Organic Green Kale is in good supply out of California. Prices are low as there has not been much demand, but that may change as Pennsylvania finishes.

Organic Lacinato and **Red Kale** are in abundant supply from CA.



OG CAULIFLOWER

Canada shippers are reporting adequate supplies of **Organic Cauliflower**. Quality has been very good.

Organic Cauliflower continues to be very tight out of California. Prices are higher out of California than Canada.



OG MANGOS

Organic Kent Mango varieties are starting to wind down in Mexico. Keitt varieties are still going strong and there will be a shift toward the Keitt varieties going into August.

We will still be offering non-hot water treated (NHT) **Organic Ataulfo Mangos**. These mangoes are shipping from a region that does not require hot water treatment. These are sure to ripen to perfection!



OG BROCCOLI

Organic Broccoli continues to be on the tighter side. Canada growers have supplies but they are not abundant, but prices are still better than California.

California Organic Broccoli remains very tight. Multiple shippers are reporting little to no harvest so far this week. Quality is said to be very good.



OG YOUNG THAI COCONUTS

The first shipment of **Organic Young Thai Coconuts** is still on track for the beginning of August. In the meantime, we have conventional Young Thai Coconuts in good supply.



OG MELONS

Organic Cantaloupes have sporadic availability and pricing has increased this week.

Organic Honeydews are also in limited supply. Sizing will reflect this as we will have to take whatever size we can get on the honeydews.



OG SWEET POTATOES

Organic White Hanna Sweet Potatoes should get started towards the end of this week. Supply on **Organic Garnet, Jewel, and Oriental Sweet Potatoes** is expected to last until the new crop start towards the end of August.

Organic Stokes Purple Potatoes out of California are just about finished and will gap until the fall.



OG ONIONS

Locally grown **Organic PA Candy Sweet Onions** are in full swing with promotable supplies. We will see **Organic Red Onions** out of PA by the last week of July.

Organic Red and **Yellow Onions** are going to have spotty availability for the next month. Washington state is in full swing, but lots of growers are unsure how much longer their crop will last with very strong demand. New crop out of Nevada will start towards the beginning of September at which time we will see excellent quality and supply, but sharp prices.



OG STONE FRUIT

Washington **Organic Cherries** continue to wind down and will be out of supply for the season soon.

Organic White Peaches and **White Nectarines** are extremely limited this week and will gap.

Organic Red and **Black Plums** are in very limited supply with small gaps between varieties.



OG GRAPES

California **Organic Champagne Grapes** are in better supply. Look for sharp pricing this week!

California **Organic Black** and **Green Grapes** are in more limited supply this week.

Organic Red Grapes are in good supply with steady pricing and outstanding quality.

IN OTHER NEWS:

- **Organic Spinach** continues to be tight out of California. Supplies are limited out of Canada, but better quality than California.

- New crop **Organic Gala Apples** out of California will start this week in a limited amount. Prices will be high.

- **Organic Grapefruit** supplies have improved this week and there seems to be a positive outlook over the next few weeks.

- New Zealand **Organic Green Kiwifruit** is in good supply. The first **Organic SunGold Kiwifruit** have arrived.

- **Organic Salads** should be in good supply for next week!

LOCAL PRODUCE



GROWER LIST

JULY 23 - JULY 30, 2015

ORGANIC



MARYLAND

HOMESTEAD FARMS

Poolesville, MD

- 40376 - OG Beans Green MD 28 lb.
- 40386 - OG Cabbage Green MD 45 lb.

NEW JERSEY

FARM LIFE

Hammonton, NJ

- 44446 - OG Blackberries NJ 12/6 oz.

VIRGINIA

RED SUN FARMS

Dublin, VA

- 41355 - OG Tomato Cluster VA 11 lb.

PENNSYLVANIA

LADY MOON FARMS

Chambersburg, PA

- 40666 - OG Chard Green Premium PA 24 ct
- 40680 - OG Chard Rainbow Premium PA 24 ct
- 40667 - OG Chard Red Premium 24 ct
- 41088 - OG Cucumbers Premium PA 20 lb.
- 40639 - OG Eggplant Premium PA 24 lb.

- 40628 - OG Greens Dandelion Prem PA 24 ct
- 40869 - OG Greens Kale PA 24 ct
- 40724 - OG Parsley Italian Flat Prem PA 30 ct
- 40723 - OG Parsley Curly Prem PA 30 ct
- 40796 - OG Peppers Green LG/XLG PA 25 lb.
- 41026 - OG Squash Yellow PA 20 lb.
- 41020 - OG Squash Zucchini Prem PA 20 lb.
- 41346 - OG Tomato Cherry Clam PA 12/1 pt
- 41385 - OG Tomato Cherry Rainbow PA 12/1 pt
- 41336 - OG Tomato Grape PA 12/1 pt
- 40139 - OG Tomato Grape PA 18/1 lb.
- 41389 - OG Tomato Heirloom PA 10 lb.

MOUNTAIN VIEW ORGANICS

Newport, PA

- 41138 - OG Cabbage Red PA 35 lb.

CLARION RIVER FARMS

Sligo, PA

- 40386 - OG Cabbage Green 45 lb.
- 41036 - OG Squash Acorn Green PA 30 lb.
- 41031 - OG Squash Butternut PA 35 lb.
- 41044 - OG Squash Kabocha PA 35 lb.

CHRIST KING

Ephrata, PA

- 41535 - OG Onion Sweet Jumbo PA 40 lb

- 41536 - OG Onion Sweet Med PA 40 lb.
- 41314 - OG Tomato Roma PA 20 lb.

REED FAMILY FARMS

Elizabethtown, PA

- 40376 - OG Beans Green PA 25 lb.

TOIGO ORGANIC FARMS

Carlisle, PA

- 41360 - OG Tomatoes Hothouse PA 10 lb.

NEW YORK

PEDERSEN FARMS

Seneca Castle, NY

- 40522 - OG Corn Bi-Color NY 48 ct



HESS FARM

Waynesboro, PA

Founded in 1986 by the Hess family, the tradition is being carried on by the second generation

Over 140 acres of fresh vegetables

Large diversity of products

Ask your sales representative or merchandiser for local grower POS signage for your store!

CONVENTIONAL

PENNSYLVANIA

BENEDICT FARMS

Chambersburg, PA

01062 - CV Corn Bi-Color PA 48 ct
01062 - CV Corn White PA 60 ct
02812 - CV Cucumber Select PA 72 ct
02803 - CV Cucumber Super Select PA 72 ct.
01838 - CV Peppers Green XLG PA 22 lb.
01842 - CV Peppers Green Display Pack PA 48 ct
02256 - CV Squash Green Fancy PA 20 lb.
02258 - CV Squash Green Medium PA 20 lb.
02328 - CV Squash Yellow Medium PA 20 lb.
02337 - CV Zucchini Gold Bar PA 20 lb.

CEDAR MEADOWS FARM

Holtwood, PA

23156 - CV Tomato Heirloom PA 15 lb.
23147 - CV Tomato Heirloom PA 8/1 quart
23206 - CV Tomato Rainbow Cherry PA 12/1 pt

CHRIST L. ESH

Holtwood, PA

01075 - CV Corn Bi-color Bin PA 50 dz
01065 - CV Corn White Bin PA 50 dz

COPENHAVER

Lebanon, PA

00482 - CV Beans Green PA 25 lb.

COUNTRY GARDENS (LABAN GARBER)

Waynesboro, PA

01820 - CV Peppers Green Bag M/L PA 18/2 lb.
02350 - CV Squash Acorn PA 35 lb.
02390 - CV Squash Spaghetti PA 35 lb.

CRAMERS FARM

Lancaster County, PA

23156 - CV Tomato Heirloom PA 15 lb.
23163 - CV Tomato Heirloom Slicer PA 8/3 ct

EPHRAIM ZOOK

Lancaster County, PA

23004 - CV Tomato VR 4x4 PA 20 lb.
23005 - CV Tomato VR 4x5 PA 20 lb.

HESS FARMS

Waynesboro, PA

02845 - CV Cucumber Kirby 40 lb.
02803 - CV Cucumber Super Select PA 72 ct
01261 - CV Eggplant PA 24 lb.
01842 - CV Peppers Green Display Pack PA 48 ct
01964 - CV Peppers Jalapeño PA 10 lb.
01970 - CV Peppers Jalapeño PA 35 lb.
01981 - CV Peppers Serranos PA 8 lb.
02256 - CV Squash Green Fancy PA 20 lb.
02258 - CV Squash Green Medium PA 20 lb.

HOOVER FARMS

Port Trevort, PA

02256 - CV Squash Green Fancy PA 20 lb.
02258 - CV Squash Green Medium PA 20 lb.

IVAN ZIMMERMAN

Stevens, PA

00758 - CV Cabbage Green Bin PA 60 ct
02320 - CV Squash Medium PA 20 lb.

JOSH WEAVER

Denver, PA

00751 - CV Cabbage Green PA 50 lb.
00780 - CV Cabbage Red PA 50 lb.
01065 - CV Corn White Bin PA 50 dz
02258 - CV Squash Green Medium PA 20 lb.

LESTER WEAVER

Lancaster County, PA

01065 - CV Corn White Bin PA 50 dz

SAM ZOOK

Ephrata, PA

23305 - CV Tomato Grape PA 12/1 pt

STAUFFER HULING FARMS

Enola, PA

00482 - CV Beans Green PA 25 lb
01062 - CV Corn Bi-Color PA 48 ct.
02803 - CV Cucumber Super Select PA 72 ct
04106 - CV Onion Sweet Jumbo 40 lb.

SUNNY HARVEST

Cochranville, PA

00631 - CV Broccoli Bin with Stem PA 110 ct
02165 - CV Rhubarb 20 lb.

BUTTER VALLEY HARVEST

Bally, PA

03000 - CV Lettuce Boston Hydro PA 12 ct

Cantaloupe Bins from Lancaster County, PA -

Contact your sales rep for specific grower bin counts.
Harnish Farms - Pequea, PA
Joseph Weaver - Ephrata, PA
Lester Weaver, Ephrata, PA

DELAWARE

VINCENT FARMS

Delmar, DE

11059 - CV Cantaloupes Bin DE 110 ct
01084 - CV Corn White Bin DE 50 dz
01086 - CV Corn Bi-Color Bin DE 50 dz

NEW JERSEY

EASTERN FRESH GROWERS

Cedarville, NJ

02806 - CV Cucumber Super Select NJ 72 ct
02910 - CV Lettuce Naked NJ 24 ct
02255 - CV Squash Green Medium NJ 20 lb.
23069 - CV Tomato VR XLG NJ 25 lb.

FLAIM FARMS

Vineland, NJ

00205 - CV Arugula NJ 24 ct
00455 - CV Basil NJ 15 ct
00560 - CV Beets Gold Bunch NJ 12 ct
00551 - CV Beets Red Bunch NJ 12 ct
00591 - CV Bok Choy NJ 30 lb.
00592 - CV Bok Choy (Shanghai) NJ 30 lb.
00770 - CV Cabbage Green Bin NJ 55/65 ct
00790 - CV Cabbage Chinese NJ 30 lb.
01675 - CV Cabbage Napa NJ 30 lb.
01362 - CV Chard Green Swiss NJ 12 ct

01355 - CV Chard Rainbow Swiss NJ 12 ct
01368 - CV Chard Red Swiss NJ 12 ct
01020 - CV Chives Bunch NJ 12 ct
01040 - CV Cilantro NJ 30 ct
01170 - CV Dandelion Bunch NJ 12 ct
01200 - CV Dill NJ 24 ct
01201 - CV Dill NJ 12 ct
01261 - CV Eggplant Premium NJ 24 lb.
01273 - CV Eggplant Sicilian NJ 20 lb.
01274 - CV Eggplant White NJ 15 lb.
01275 - CV Eggplant Graffiti NJ 12 lb.
01285 - CV Eggplant Italian NJ 10 lb.
02905 - CV Escarole NJ 24 ct
02885 - CV Endive/Chickory NJ 24 ct
01308 - CV Greens Collard 18 ct NJ 18 lb.
01315 - CV Greens Kale 18 ct NJ 18 lb.
01346 - CV Greens Mustard NJ 18 lb.
01350 - CV Greens Turnip NJ 18 lb.
01462 - CV Kohlrabi Green 12 ct
01478 - CV Leeks Bunched NJ 12 ct
03042 - CV Lettuce Boston NJ 24 ct
03028 - CV Lettuce /Boston Red NJ 12 ct
03065 - CV Lettuce Red Leaf NJ 24ct
01516 - CV Mint Box NJ 12 ct
01706 - CV Parsley Curly NJ 30 ct
01712 - CV Parsley Italian NJ 30 ct
01720 - CV Parsley Root NJ 12 ct
01960 - CV Peppers Anaheim NJ 10 lb.
01975 - CV Peppers Cubanelle NJ 18 lb.
01977 - CV Peppers Cubanelle NJ 9 lb.
01834 - CV Pepper Green XLG NJ 22 lb.
01967 - CV Peppers Jalapeño NJ 35 lb.
01965 - CV Peppers Jalapeño NJ 10 lb.
01980 - CV Peppers Long Hot NJ 16 lb.
01980 - CV Peppers Long Hot NJ 8 lb.
01802 - CV Peppers Suntan NJ 22 lb.
03127 - CV Radish Red Bunch NJ 24 ct
03205 - CV Scallions NJ 48 ct
02200 - CV Spinach Bunched NJ 24 ct
02238 - CV Squash Green Fancy NJ 20 lb.
23069 - CV Tomato VR XLG NJ 25 lb.
23121 - CV Tomato VR JBO NJ 25 lb.

JERSEY FRESH

Glassboro, NJ

04404 - CV Potatoes White NJ 10/5 lb.

JERSEY FRUIT

Glassboro, NJ

15475 - CV Nectarines 2 1/2" NJ 25 lb.
15679 - CV Peaches 2 3/4" 25 lb.
15498 - CV Peaches Yellow Clam NJ 10/2 lb.

VIRGINIA

Crown Orchard

Batesville, VA

15733 - CV Peaches Donut 2-1/2" VA 16/20 oz.



CONVENTIONAL MARKET NEWS

CA RAIN AFFECTING GRAPE HARVESTS

If you've been watching the news, you have seen the intense amount of rain California received this past weekend. The question is now, what does this mean going forward for **Grapes** in the next few weeks?

There are a couple of things going in the grower's direction following the rain. The intensity was spotted in different locations. Damage will have to be assessed from grower to grower, and field to field as one area was hit hard while just a few miles away, some were spared and missed the deluge.

Mostly affected will be **Thompson, Sugarone, and Flame Grapes** which are in the process of being harvested. The Flames in particular will be affected, because it is a grape that is picked for immediate shipment and not put into storage. Not all of these varieties will show or develop problems, because like mentioned before, some of the fields were blessed and missed any significant rain.

Expect the market to develop a significant divide with fruit that needs to move because it was hit by the rain and fruit that can hold for the true market price. You will see some cheap deals even on the larger sizes, but buyer beware. Not to worry though, barring any other downpours we have a long season ahead of us with some of the best varieties, like **Autumn King Grapes**, still a month off from starting to go.

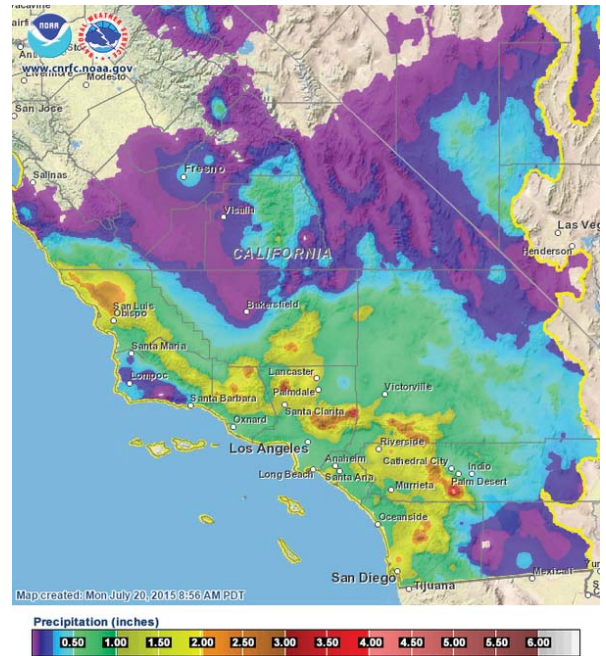


Photo: weather.gov



CV BIN CANTALOUPE

Finally! **Bin Cantaloupes** from Lancaster County, PA have started to arrive by the wagon load. Better volumes will continue this week. Prices will be down slightly and should continue to trend down as more fruit is available.



CV CA STONE FRUIT

Most growers are thankful they missed the rain from the weekend that would have been very detrimental going into the last month or so of the CA **Stone Fruit** season. The growers that weren't so lucky will struggle the next few weeks with staining caused by the rain, particularly on **White Peaches** and **Nectarines**. The **Nectarines** that were short last week finally came around and most growers have availability.

Plums seem plentiful too, with some of the later varieties like **Friars** already in good volume with some growers.

An excellent rundown of **Pluots** are available along with the **Purple Rose Apriums** now in.



CV BLUEBERRIES

New Jersey **Blueberries** are finished for the season. All of the demand will shift to the Pacific Northwest. Prices will be higher next week. The season began a few weeks earlier than expected, so there are some growers saying the deal could end much earlier than anticipated.

There could be a significant gap beginning in mid to late August until Argentina starts shipping. Watch for updates in the next few weeks.



CV STRAWBERRIES

Warm weather in California is taking a toll on **Strawberry** volumes and quality. We will see markets increase for good fruit. There will be less expensive fruit around, but quality will be suspect. Look for some bruising issues even on the "premium" fruit.



CV CUCUMBERS

Volumes of **Cucumbers** are ramping up quickly and will continue for the next few weeks. Look for lower prices this week. **Cucumbers** are a good item to promote!



CV GREEN BEANS

Pennsylvania **Green Beans** from Copenhaver Farm will be in great supply this week. Prices will be down slightly. They are a great item to promote this week!



CV SWEET CORN

We saw a gap in supplies last week on **Sweet Corn** as some farmers transitioned to later plantings. We should see slightly better volumes this week, but there will not be an excess supply. Prices will be up slightly this week.



CV WATERMELONS

Delaware and Maryland **Watermelon** volumes will increase this week. The pipeline is still empty so prices are expected to hold through mid-week. We could see them ease down by the end of the week if supplies continue as expected.



CV BROCCOLI

WEST COAST: **Broccoli** supplies will remain limited through the end of July. Hot and humid weather is also taking a toll on quality.

EAST COAST: **Broccoli** supplies will continue to be limited this week. Look for better supplies during the first full week of August. Prices from both coasts will remain steady but high.



CV TOMATOES

Pennsylvania growers are expecting to see volumes increase on all **Tomatoes** this week. Look for lower pricing to start this week and potentially get lower as the week goes on.



CV CAULIFLOWER

Cauliflower supplies are expected to become more "normal" this week, as the excess has cleaned up. We expect to see this market stabilize and remain steady for a few weeks.



CV ASPARAGUS

Higher prices and tighter supplies of **Asparagus** will continue this week. Volume out of Peru will remain limited.



CV CHERRIES

The season is winding down for Washington **Cherries** and supplies are in the hands of two to three growers, but mainly two. Prices have doubled, and on some sizes, tripled over the level of this time last week. These last varieties being packed will run dominantly to the larger spectrum with little to no small sizes. Quality overall is good, much better than a few weeks ago.

Depending on demand, which has been extremely light since before July 4th, **Cherries** will be available through the end of the month. There is a little fruit coming from British Columbia, Canada as well. Prices have been a little less, but are now starting to match the Washington prices. Quality has been nice.



CV EASTERN PEACHES

New Jersey **Peaches** are in good shape and supplies are steady, but the market did not react and has remained the same. To go along with **Jersey Peaches**, **Nectarines** are available but supplies are erratic and **White Peaches** should start sometime next week.

This last heat wave that stretched from the Midwest to the Southeast slowed the **Peach** crop down in Georgia and South Carolina. Supplies were light from these states with little to no large sizes available.



CV POTATOES

New crop **New Jersey White** and **Red Potatoes** will get started this week. Pricing and quality will both be pretty sharp!

Supply out of Idaho on **Russet Potatoes** is very good right now with reports indicating that shippers are holding a few more **Russet Potatoes** than last year. Expect the **Russet Potato** market to soften as we head into the month of August with good supplies to be expected as shippers attempt to move through the remainder of their storage crop. New crop **Potatoes** are expected to be available 7-10 days sooner than normal in all shipping regions.

We have seen some absolutely beautiful **Loose Potatoes** out of Stockton, CA.



CV PEARS

California **Bartlett** and **Red Starkrimson Pears** are in. **Bosc Pears** will ship around the 27th of July with **Seckel**, **French Butter**, **Comice** and **Forelle Pears** to start by mid-August.

There are still import **Pears** on the East Coast at very competitive prices for those looking for a great deal. Washington is cleaning up the last rooms opened on storage **Anjou Pears** and Washington **Bartlett Pears** will not be far behind.

NEW VILLAGE FARMS TOMATOES

23028	TOMATO TRUE REBEL	8/1 LB
23283	TOMATO CHERRY No.9 OTV	16/6 OZ
23336	TOMATO CABERNET OTV	16/8 OZ



LOCAL HEIRLOOM TOMATOES

23156	CV TOMATO HEIRLOOM PA	15 LB
23163	CV TOMATO HEIRLOOM SLICER	8/3 CT
23147	CV TOMATO HEIRLOOM	8/1 QT
23206	CV TOMATO RAINBOW CHERRY	12/1 PT

